

Product datasheet for **CF500196**

HNF6 (ONECUT1) Mouse Monoclonal Antibody [Clone ID: OTI4F12]

Product data:

Product Type:	Primary Antibodies
Clone Name:	OTI4F12
Applications:	IF, IHC, WB
Recommended Dilution:	WB 1:500, IHC 1:50, IF 1:100
Reactivity:	Human, Mouse, Rat
Host:	Mouse
Isotype:	IgG1
Clonality:	Monoclonal
Immunogen:	Human recombinant protein fragment corresponding to amino acids 85-198 of human HNF6 (NP_004489) produced in E.coli.
Formulation:	Lyophilized powder (original buffer 1X PBS, pH 7.3, 8% trehalose)
Reconstitution Method:	For reconstitution, we recommend adding 100uL distilled water to a final antibody concentration of about 1 mg/mL. To use this carrier-free antibody for conjugation experiment, we strongly recommend performing another round of desalting process. (OriGene recommends Zeba Spin Desalting Columns, 7KMWCO from Thermo Scientific)
Purification:	Purified from mouse ascites fluids or tissue culture supernatant by affinity chromatography (protein A/G)
Conjugation:	Unconjugated
Storage:	Store at -20°C as received.
Stability:	Stable for 12 months from date of receipt.
Predicted Protein Size:	50.8 kDa
Gene Name:	one cut homeobox 1
Database Link:	NP_004489 Entrez Gene 15379 Mouse Entrez Gene 25231 Rat Entrez Gene 3175 Human Q9UBCO
Background:	The protein encoded by HNF6 is Transcriptional activator. Binds the consensus sequence 5'-DHWATTGAYTWWD-3' on a variety of gene promoters such as those of HNF3B and TTR. Important for liver genes transcription.



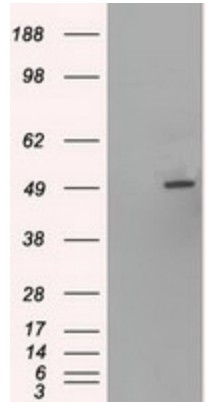
[View online »](#)

Synonyms: HNF-6; HNF6; HNF6A

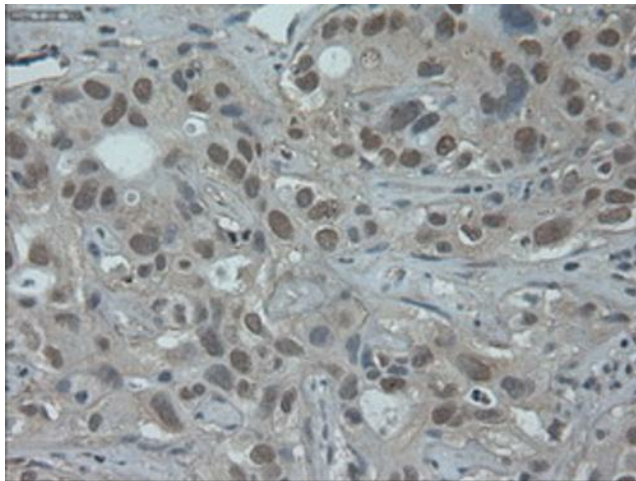
Protein Families: ES Cell Differentiation/IPS, Transcription Factors

Protein Pathways: Maturity onset diabetes of the young

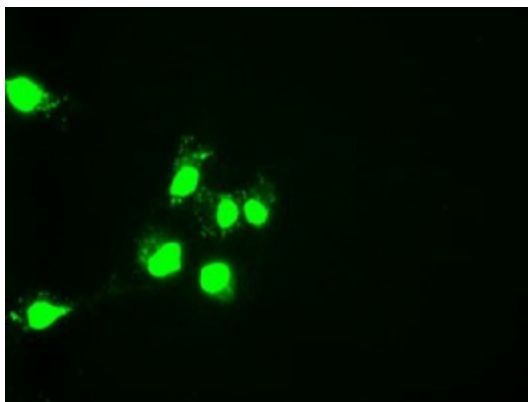
Product images:



HEK293T cells were transfected with the pCMV6-ENTRY control (Cat# [PS100001], Left lane) or pCMV6-ENTRY HNF6 (Cat# [RC218219], Right lane) cDNA for 48 hrs and lysed. Equivalent amounts of cell lysates (5 ug per lane) were separated by SDS-PAGE and immunoblotted with anti-HNF6 (Cat# [TA500196]). Positive lysates [LY401429] (100ug) and [LC401429] (20ug) can be purchased separately from OriGene.



Immunohistochemical staining of paraffin-embedded Carcinoma of Human liver tissue using anti-HNF6 mouse monoclonal antibody. (Heat-induced epitope retrieval by 10mM citric buffer, pH6.0, 100°C for 10min, [TA500196])



Anti-HNF6 mouse monoclonal antibody ([TA500196]) immunofluorescent staining of COS7 cells transiently transfected by pCMV6-ENTRY HNF6 ([RC218219]).

