

Product datasheet for **CF500183**

ID2 Mouse Monoclonal Antibody [Clone ID: OTI10C3]

Product data:

Product Type:	Primary Antibodies
Clone Name:	OTI10C3
Applications:	IF, IHC, WB
Recommended Dilution:	WB 1:500, IHC 1:50, IF 1:50
Reactivity:	Human, Mouse, Rat
Host:	Mouse
Isotype:	IgG2b
Clonality:	Monoclonal
Immunogen:	Full length human recombinant protein of human ID2 (NP_002157) produced in E.coli.
Formulation:	Lyophilized powder (original buffer 1X PBS, pH 7.3, 8% trehalose)
Reconstitution Method:	For reconstitution, we recommend adding 100uL distilled water to a final antibody concentration of about 1 mg/mL. To use this carrier-free antibody for conjugation experiment, we strongly recommend performing another round of desalting process. (OriGene recommends Zeba Spin Desalting Columns, 7KMWCO from Thermo Scientific)
Purification:	Purified from mouse ascites fluids or tissue culture supernatant by affinity chromatography (protein A/G)
Conjugation:	Unconjugated
Storage:	Store at -20°C as received.
Stability:	Stable for 12 months from date of receipt.
Predicted Protein Size:	14.7 kDa
Gene Name:	inhibitor of DNA binding 2
Database Link:	NP_002157 Entrez Gene 15902 Mouse Entrez Gene 25587 Rat Entrez Gene 3398 Human Q02363



[View online »](#)

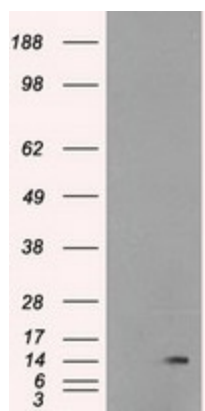
Background: The protein encoded by this gene belongs to the inhibitor of DNA binding (ID) family, members of which are transcriptional regulators that contain a helix-loop-helix (HLH) domain but not a basic domain. Members of the ID family inhibit the functions of basic helix-loop-helix transcription factors in a dominant-negative manner by suppressing their heterodimerization partners through the HLH domains. This protein may play a role in negatively regulating cell differentiation. A pseudogene has been identified for this gene.

Synonyms: bHLHb26; GIG8; ID2A; ID2H

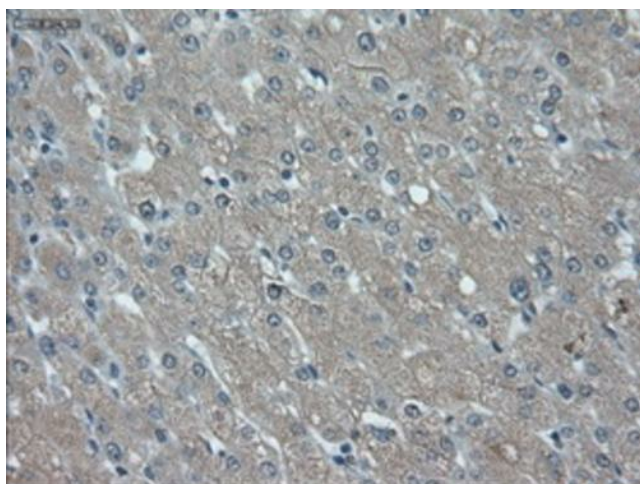
Protein Families: ES Cell Differentiation/IPS, Stem cell relevant signaling - TGFb/BMP signaling pathway, Transcription Factors

Protein Pathways: TGF-beta signaling pathway

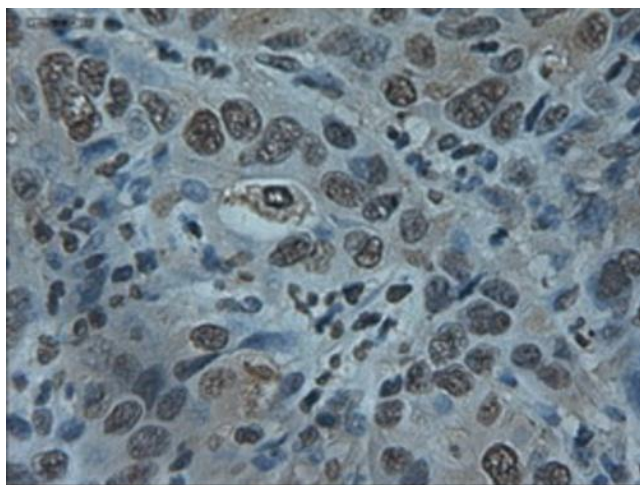
Product images:



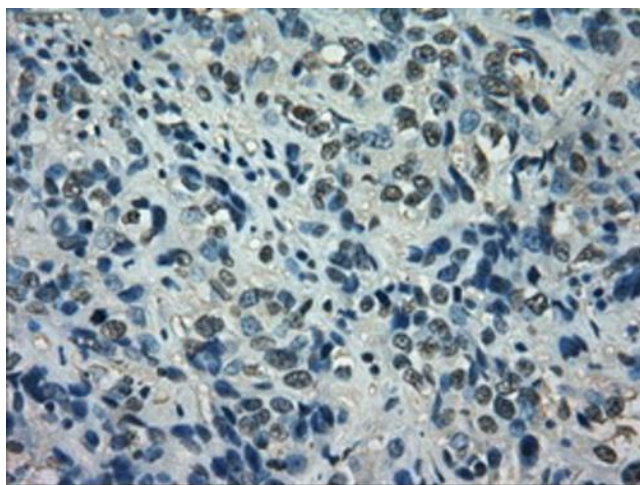
HEK293T cells were transfected with the pCMV6-ENTRY control (Cat# [PS100001], Left lane) or pCMV6-ENTRY ID2 (Cat# [RC205324], Right lane) cDNA for 48 hrs and lysed. Equivalent amounts of cell lysates (5 ug per lane) were separated by SDS-PAGE and immunoblotted with anti-ID2 (Cat# [TA500183]). Positive lysates [LY400786] (100ug) and [LC400786] (20ug) can be purchased separately from OriGene.



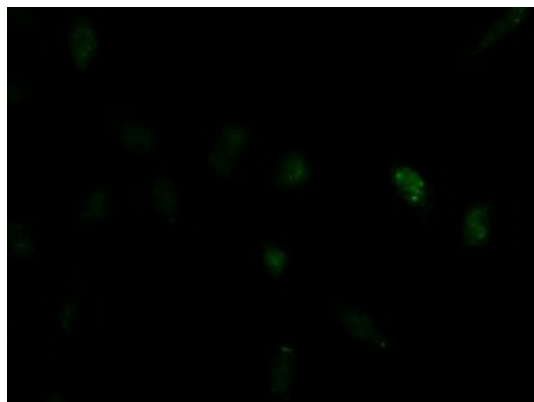
Immunohistochemical staining of paraffin-embedded Human liver tissue within the normal limits using anti-ID2 mouse monoclonal antibody. (Heat-induced epitope retrieval by 10mM citric buffer, pH6.0, 100°C for 10min, [TA500183])



Immunohistochemical staining of paraffin-embedded Carcinoma of Human liver tissue using anti-ID2 mouse monoclonal antibody. (Heat-induced epitope retrieval by 10mM citric buffer, pH6.0, 100°C for 10min, [TA500183])



Immunohistochemical staining of paraffin-embedded Carcinoma of Human bladder tissue using anti-ID2 mouse monoclonal antibody. (Heat-induced epitope retrieval by 10mM citric buffer, pH6.0, 100°C for 10min, [TA500183])



Immunofluorescent staining of HeLa cells using anti-ID2 mouse monoclonal antibody ([TA500183]).