

Product datasheet for **CF500171**

EPCAM Mouse Monoclonal Antibody [Clone ID: OTI2C8]

Product data:

Product Type:	Primary Antibodies
Clone Name:	OTI2C8
Applications:	IHC, WB
Recommended Dilution:	WB 1:200~500, IHC 1:50
Reactivity:	Human
Host:	Mouse
Isotype:	IgM
Clonality:	Monoclonal
Immunogen:	Human recombinant protein fragment corresponding to amino acids 24-265 of human EpCAM (NP_002345) produced in E.coli.
Formulation:	Lyophilized powder (original buffer 1X PBS, pH 7.3, 8% trehalose)
Reconstitution Method:	For reconstitution, we recommend adding 100uL distilled water to a final antibody concentration of about 1 mg/mL. To use this carrier-free antibody for conjugation experiment, we strongly recommend performing another round of desalting process. (OriGene recommends Zeba Spin Desalting Columns, 7KMWCO from Thermo Scientific)
Purification:	Purified from mouse ascites fluids or tissue culture supernatant by affinity chromatography (protein A/G)
Conjugation:	Unconjugated
Storage:	Store at -20°C as received.
Stability:	Stable for 12 months from date of receipt.
Predicted Protein Size:	32.7 kDa
Gene Name:	epithelial cell adhesion molecule
Database Link:	NP_002345 Entrez Gene 4072 Human P16422



[View online »](#)

Background:

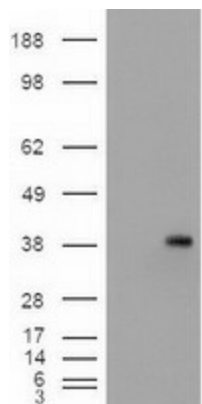
EpCAM is a carcinoma-associated antigen and is a member of a family that includes at least two type I membrane proteins. This antigen is expressed on most normal epithelial cells and gastrointestinal carcinomas and functions as a homotypic calcium-independent cell adhesion molecule. The antigen is being used as a target for immunotherapy treatment of human carcinomas.

Synonyms:

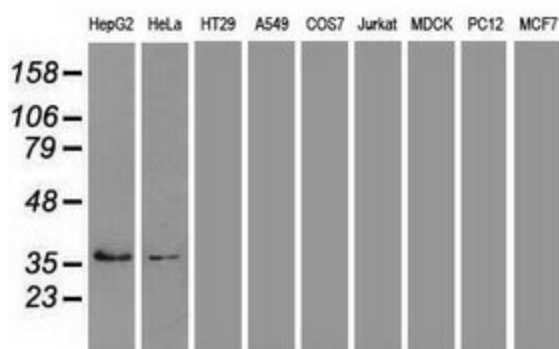
DIAR5; EGP-2; EGP40; EGP314; ESA; HNPCC8; KS1/4; KSA; M4S1; MIC18; MK-1; TACSTD1; TROP1

Protein Families:

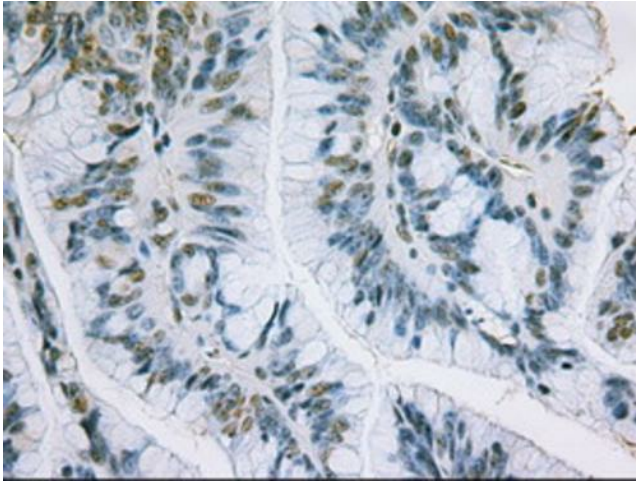
ES Cell Differentiation/IPS, Transmembrane

Product images:


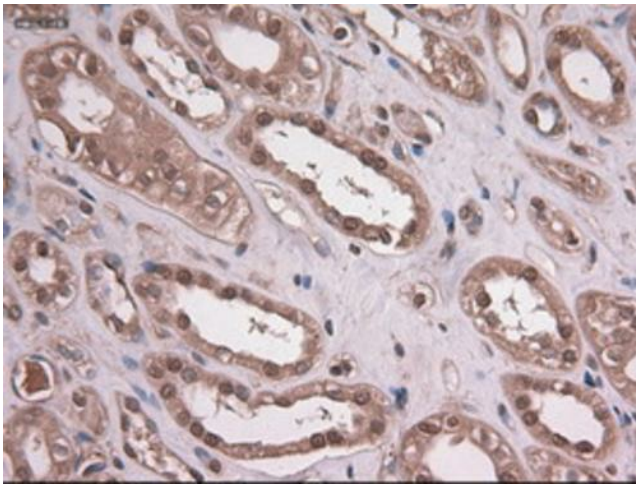
HEK293T cells were transfected with the pCMV6-ENTRY control (Left lane) or pCMV6-ENTRY TACSTD1 ([RC201989], Right lane) cDNA for 48 hrs and lysed. Equivalent amounts of cell lysates (5 ug per lane) were separated by SDS-PAGE and immunoblotted with anti-TACSTD1. Positive lysates [LY400847] (100ug) and [LC400847] (20ug) can be purchased separately from OriGene.



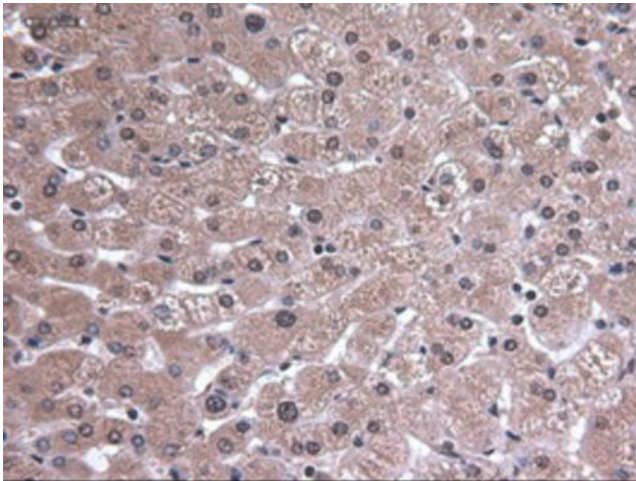
Western blot analysis of extracts (35ug) from 9 different cell lines by using anti-TACSTD1 monoclonal antibody.



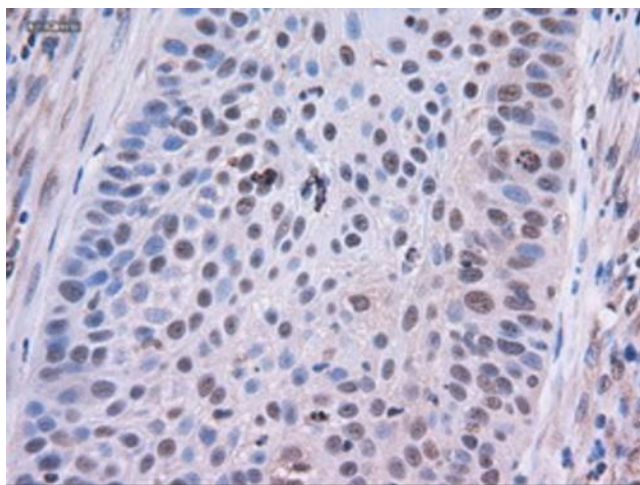
Immunohistochemical staining of paraffin-embedded Adenocarcinoma of Human colon tissue using anti-TACSTD1 mouse monoclonal antibody. (Heat-induced epitope retrieval by 10mM citric buffer, pH6.0, 100°C for 10min, [TA500171])



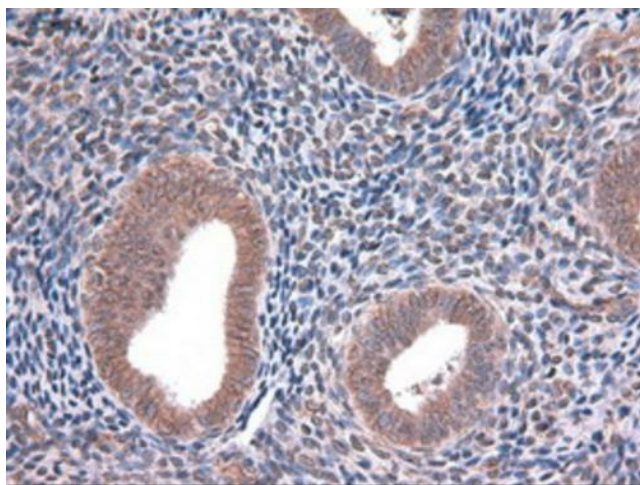
Immunohistochemical staining of paraffin-embedded Human Kidney tissue within the normal limits using anti-TACSTD1 mouse monoclonal antibody. (Heat-induced epitope retrieval by 10mM citric buffer, pH6.0, 100°C for 10min, [TA500171])



Immunohistochemical staining of paraffin-embedded Human liver tissue within the normal limits using anti-TACSTD1 mouse monoclonal antibody. (Heat-induced epitope retrieval by 10mM citric buffer, pH6.0, 100°C for 10min, [TA500171])



Immunohistochemical staining of paraffin-embedded Carcinoma of Human lung tissue using anti-TACSTD1 mouse monoclonal antibody. (Heat-induced epitope retrieval by 10mM citric buffer, pH6.0, 100°C for 10min, [TA500171])



Immunohistochemical staining of paraffin-embedded Human endometrium tissue within the normal limits using anti-TACSTD1 mouse monoclonal antibody. (Heat-induced epitope retrieval by 10mM citric buffer, pH6.0, 100°C for 10min, [TA500171])