

Product datasheet for **CF500146**

Pancreatic alpha amylase (AMY2A) Mouse Monoclonal Antibody [Clone ID: OTI6D4]

Product data:

Product Type:	Primary Antibodies
Clone Name:	OTI6D4
Applications:	IHC, WB
Recommended Dilution:	WB: 1:500, IHC 1:50
Reactivity:	Human
Host:	Mouse
Isotype:	IgG2b
Clonality:	Monoclonal
Immunogen:	Recombinant protein expressed in E.coli corresponding to amino acids 300-511 of human AMY2A
Formulation:	Lyophilized powder (original buffer 1X PBS, pH 7.3, 8% trehalose)
Reconstitution Method:	For reconstitution, we recommend adding 100uL distilled water to a final antibody concentration of about 1 mg/mL. To use this carrier-free antibody for conjugation experiment, we strongly recommend performing another round of desalting process. (OriGene recommends Zeba Spin Desalting Columns, 7KMWCO from Thermo Scientific)
Purification:	Purified from mouse ascites fluids or tissue culture supernatant by affinity chromatography (protein A/G)
Conjugation:	Unconjugated
Storage:	Store at -20°C as received.
Stability:	Stable for 12 months from date of receipt.
Predicted Protein Size:	57.7 kDa
Gene Name:	amylase alpha 2A
Database Link:	NP_000690 Entrez Gene 279 Human P04746



[View online »](#)

Background:

Amylases are secreted proteins that hydrolyze 1,4-alpha-glucoside bonds in oligosaccharides and polysaccharides, and thus catalyze the first step in digestion of dietary starch and glycogen. The human genome has a cluster of several amylase genes that are expressed at high levels in either salivary gland or pancreas. This gene encodes an amylase isoenzyme produced by the pancreas

Synonyms:

AMY2; PA

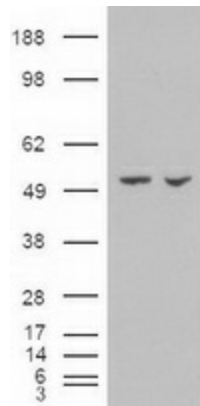
Protein Families:

Secreted Protein

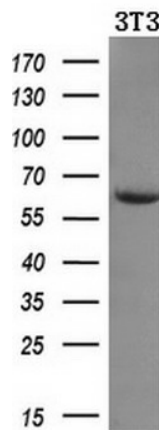
Protein Pathways:

Metabolic pathways, Starch and sucrose metabolism

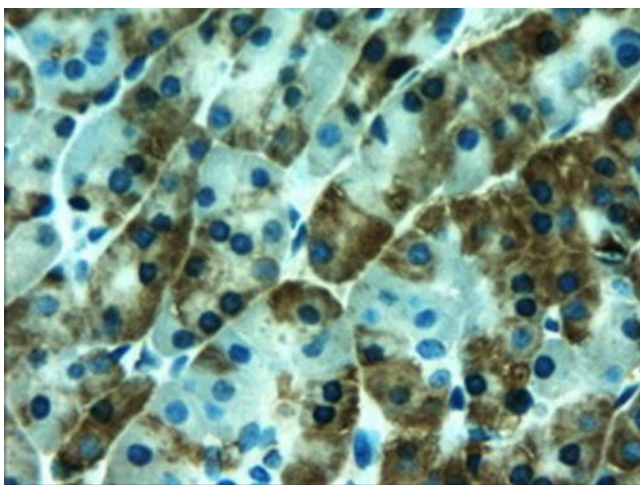
Product images:



HEK293T cells were transfected with the pCMV6-ENTRY control (Cat# [PS100001], Left lane) or pCMV6-ENTRY AMY2A (Cat# [RC202805], Right lane) cDNA for 48 hrs and lysed. Equivalent amounts of cell lysates (5 ug per lane) were separated by SDS-PAGE and immunoblotted with anti-AMY2A (Cat# [TA500146]). Positive lysates [LY424559] (100ug) and [LC424559] (20ug) can be purchased separately from OriGene.



Western blot analysis of extracts (10ug) from a mouse cell line by using anti-AMY2A monoclonal antibody (1:200).



Immunohistochemical staining of paraffin-embedded pancreas within the normal limits using anti-AMY2A ([TA500146]) mouse monoclonal antibody (Heat-induced epitope retrieval by 10mM citric buffer, pH6.0, 100°C for 10min).