

Product datasheet for **CF500099**

Hex (HHEX) Mouse Monoclonal Antibody [Clone ID: OTI3F4 1B1]

Product data:

Product Type:	Primary Antibodies
Clone Name:	OTI3F4 1B1
Applications:	IF, WB
Recommended Dilution:	WB 1:2000-1:10000, IF (1:100)
Reactivity:	Human, Mouse, Rat
Host:	Mouse
Isotype:	IgG2b
Clonality:	Monoclonal
Immunogen:	Recombinant fragment expressed in E.coli corresponding to amino acids 100-270 of human Hex
Formulation:	Lyophilized powder (original buffer 1X PBS, pH 7.3, 8% trehalose)
Reconstitution Method:	For reconstitution, we recommend adding 100uL distilled water to a final antibody concentration of about 1 mg/mL. To use this carrier-free antibody for conjugation experiment, we strongly recommend performing another round of desalting process. (OriGene recommends Zeba Spin Desalting Columns, 7KMWCO from Thermo Scientific)
Purification:	Purified from mouse ascites fluids or tissue culture supernatant by affinity chromatography (protein A/G)
Conjugation:	Unconjugated
Storage:	Store at -20°C as received.
Stability:	Stable for 12 months from date of receipt.
Predicted Protein Size:	29.8 kDa (experimental 44 kDa)
Gene Name:	hematopoietically expressed homeobox
Database Link:	NP_002720 Entrez Gene 15242 Mouse Entrez Gene 79237 Rat Entrez Gene 3087 Human Q03014
Background:	Hex is a member of the homeobox family of transcription factors, many of which are involved in developmental processes. Expression in specific hematopoietic lineages suggests that this protein may play a role in hematopoietic differentiation.



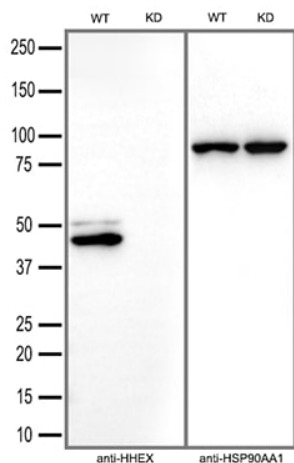
[View online »](#)

Synonyms: HEX; HMPH; HOX11L-PEN; PRH; PRHX

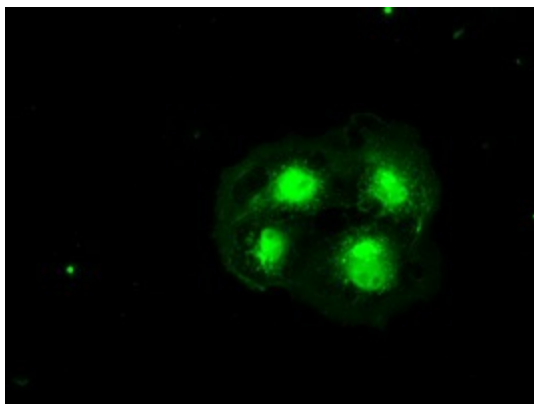
Protein Families: Druggable Genome, Transcription Factors

Protein Pathways: Maturity onset diabetes of the young

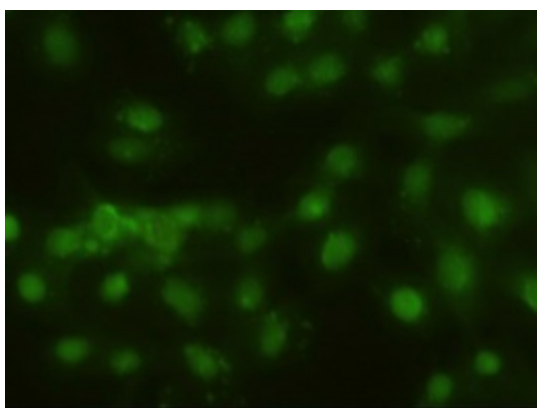
Product images:



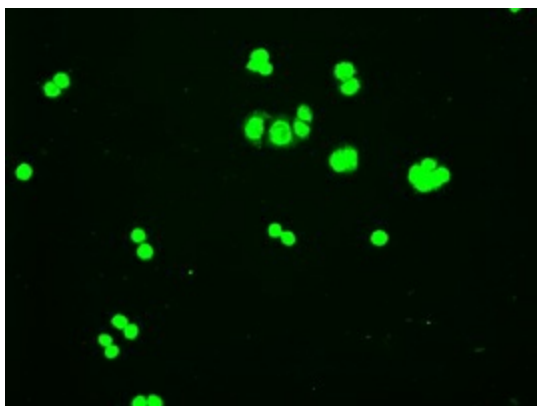
Equivalent amounts of cell lysates (30 ug per lane) of wild-type HeLa cells(WT) and HHEX-Knockdown HeLa cells(KD) were separated by SDS-PAGE and immunoblotted with anti-HHEX monoclonal antibody [TA500099](1:10000).Then the blotted membrane was stripped and reprobed with anti-HSP90AA1 antibody as a loading control.



Anti-HHex mouse monoclonal antibody ([TA500099]) immunofluorescent staining of COS7 cells transiently transfected by pCMV6-ENTRY HHex ([RC204815]).



Immunofluorescent staining of HeLa cells using anti-HHex mouse monoclonal antibody ([TA500099]).



Immunofluorescent staining of HT29 cells using anti-HHex mouse monoclonal antibody ([TA500099]).