

## Product datasheet for **CF500097**

### **Bcl x (BCL2L1) Mouse Monoclonal Antibody [Clone ID: OTI4A9]**

#### **Product data:**

<b>Product Type:</b>	Primary Antibodies
<b>Clone Name:</b>	OTI4A9
<b>Applications:</b>	IF, IHC, WB
<b>Recommended Dilution:</b>	WB: 1:200 - 1:1000, IF (1:100)
<b>Reactivity:</b>	Human, Mouse, Rat
<b>Host:</b>	Mouse
<b>Isotype:</b>	IgG2a
<b>Clonality:</b>	Monoclonal
<b>Immunogen:</b>	Recombinant fragment expressed in E.coli corresponding to amino acids 1-212 of human Bcl-XL
<b>Formulation:</b>	Lyophilized powder (original buffer 1X PBS, pH 7.3, 8% trehalose)
<b>Reconstitution Method:</b>	For reconstitution, we recommend adding 100uL distilled water to a final antibody concentration of about 1 mg/mL. To use this carrier-free antibody for conjugation experiment, we strongly recommend performing another round of desalting process. (OriGene recommends Zeba Spin Desalting Columns, 7KMWCO from Thermo Scientific)
<b>Purification:</b>	Purified from mouse ascites fluids or tissue culture supernatant by affinity chromatography (protein A/G)
<b>Conjugation:</b>	Unconjugated
<b>Storage:</b>	Store at -20°C as received.
<b>Stability:</b>	Stable for 12 months from date of receipt.
<b>Predicted Protein Size:</b>	25.9 kDa
<b>Gene Name:</b>	BCL2 like 1
<b>Database Link:</b>	<a href="#">NP_612815</a> <a href="#">Entrez Gene 12048 Mouse</a> <a href="#">Entrez Gene 24888 Rat</a> <a href="#">Entrez Gene 598 Human</a> <a href="#">Q07817</a>



[View online »](#)

**Background:**

Bcl-XL belongs to the BCL-2 protein family. BCL-2 family members form hetero- or homodimers and act as anti- or pro-apoptotic regulators that are involved in a wide variety of cellular activities. The proteins encoded by this gene are located at the outer mitochondrial membrane, and have been shown to regulate outer mitochondrial membrane channel (VDAC) opening. VDAC regulates mitochondrial membrane potential, and thus controls the production of reactive oxygen species and release of cytochrome C by mitochondria, both of which are the potent inducers of cell apoptosis. Two alternatively spliced transcript variants, which encode distinct isoforms, have been reported. The longer isoform acts as an apoptotic inhibitor and the shorter form acts as an apoptotic activator

**Synonyms:**

Bcl-X; BCL-XL/S; BCL2L; BCLX; PPP1R52

**Protein Families:**

Druggable Genome, ES Cell Differentiation/IPS, Transmembrane

**Protein Pathways:**

Amyotrophic lateral sclerosis (ALS), Apoptosis, Chronic myeloid leukemia, Jak-STAT signaling pathway, Pancreatic cancer, Pathways in cancer, Small cell lung cancer

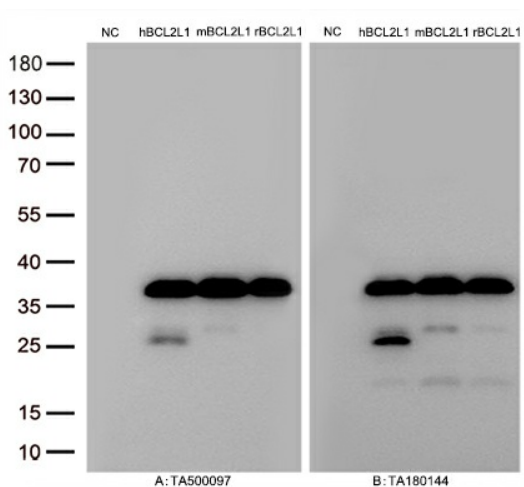
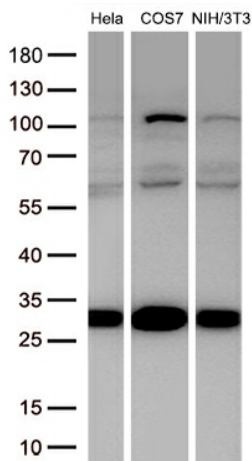
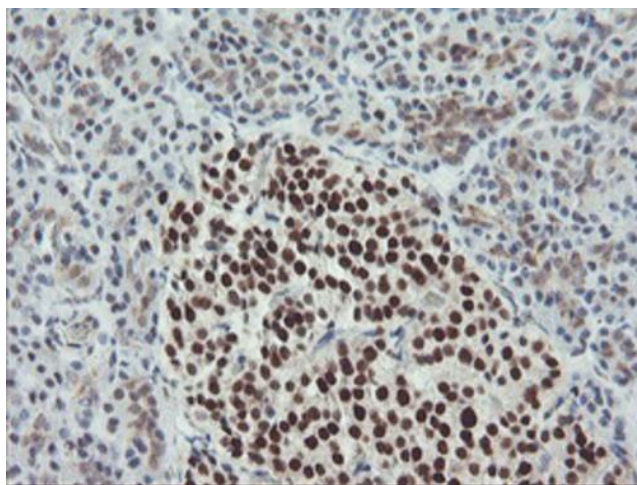
**Product images:**


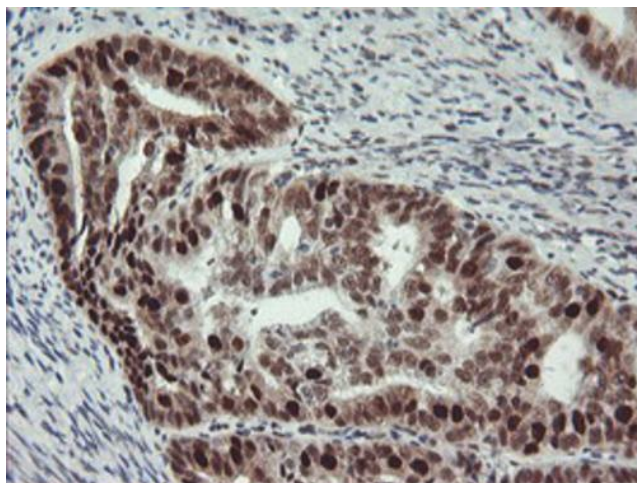
Figure A, Western blot analysis of overexpressed lysates (15ug per lane) from HEK293T cells transfected with empty plasmid ([PS100001], NC), human BCL2L1 plasmid ([RC201314], hBCL2L1), mouse BCL2L1 plasmid ([MR202824], mBCL2L1), rat BCL2L1 plasmid ([RR200467], rBCL2L1) using anti-BCL2L1 antibody [TA500097] (1:10000@1mg/ml). Figure B, Western blot analysis of the same samples as figure A with anti-DDK antibody ([TA180144], 1:10000@1mg/ml)



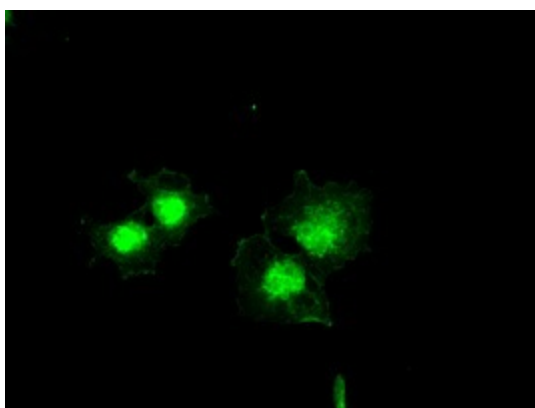
Western blot analysis of extracts (30ug per lane) from 3 different cell lines lysates by using anti-BCL2L1 antibody([TA500097],1:1000@1mg/ml).



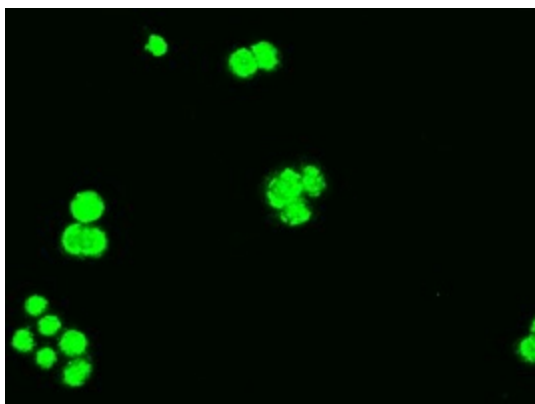
Immunohistochemical staining of paraffin-embedded Human pancreas tissue within the normal limits using anti-BCL-XL mouse monoclonal antibody. ([TA500097]) (1:150). Heat-induced epitope retrieval by EDTA solution buffer pH 8.0 at 120°C for 3 min.



Immunohistochemical staining of paraffin-embedded Adenocarcinoma of Human endometrium tissue using anti-BCL-XL mouse monoclonal antibody. ([TA500097]) (1:150). Heat-induced epitope retrieval by EDTA solution buffer pH 8.0 at 120°C for 3 min.



Anti-BCL2L1 mouse monoclonal antibody ([TA500097]) immunofluorescent staining of COS7 cells transiently transfected by pCMV6-ENTRY BCL2L1 ([RC201314]) (1:100).



Immunofluorescent staining of HT29 cells using anti-BCL2L1 mouse monoclonal antibody ([TA500097]) (1:50).