

Product datasheet for **CF500066**

IL6 Mouse Monoclonal Antibody [Clone ID: OTI2G3]

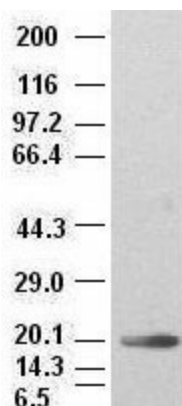
Product data:

Product Type:	Primary Antibodies
Clone Name:	OTI2G3
Applications:	WB
Recommended Dilution:	WB 1:2000
Reactivity:	Human
Host:	Mouse
Isotype:	IgM
Clonality:	Monoclonal
Immunogen:	Recombinant protein expressed in E.coli corresponding to amino acids 29-212 of human IL-6
Formulation:	Lyophilized powder (original buffer 1X PBS, pH 7.3, 8% trehalose)
Reconstitution Method:	For reconstitution, we recommend adding 100uL distilled water to a final antibody concentration of about 1 mg/mL. To use this carrier-free antibody for conjugation experiment, we strongly recommend performing another round of desalting process. (OriGene recommends Zeba Spin Desalting Columns, 7KMWCO from Thermo Scientific)
Purification:	Purified from mouse ascites fluids or tissue culture supernatant by affinity chromatography (protein A/G)
Conjugation:	Unconjugated
Storage:	Store at -20°C as received.
Stability:	Stable for 12 months from date of receipt.
Predicted Protein Size:	23.5 kDa
Gene Name:	interleukin 6
Database Link:	NP_000591 Entrez Gene 3569 Human P05231
Background:	IL6 is an immunoregulatory cytokine that activates a cell surface signaling assembly composed of IL6, IL6RA (IL6R; MIM 147880), and the shared signaling receptor gp130 (IL6ST; MIM 600694)



[View online »](#)

Synonyms:	BSF-2; BSF2; CDF; HGF; HSF; IFN-beta-2; IFNB2; IL-6
Protein Families:	Druggable Genome, Secreted Protein
Protein Pathways:	Cytokine-cytokine receptor interaction, Cytosolic DNA-sensing pathway, Graft-versus-host disease, Hematopoietic cell lineage, Hypertrophic cardiomyopathy (HCM), Jak-STAT signaling pathway, NOD-like receptor signaling pathway, Pathways in cancer, Prion diseases, Toll-like receptor signaling pathway

Product images:

IL-6 antibody (2G3) at 1:2000 + recombinant human IL-6 (Cat# [RC202078])