

Product datasheet for **CF500064**

FGF1 Mouse Monoclonal Antibody [Clone ID: OTI4D2]

Product data:

Product Type:	Primary Antibodies
Clone Name:	OTI4D2
Applications:	IF, WB
Recommended Dilution:	WB 1:5000~50000, IF 1:100
Reactivity:	Human, Mouse, Rat
Host:	Mouse
Isotype:	IgG1
Clonality:	Monoclonal
Immunogen:	Human recombinant protein fragment corresponding to amino acids 16-155 of human AFGF (NP_000791) produced in E.coli.
Formulation:	Lyophilized powder (original buffer 1X PBS, pH 7.3, 8% trehalose)
Reconstitution Method:	For reconstitution, we recommend adding 100uL distilled water to a final antibody concentration of about 1 mg/mL. To use this carrier-free antibody for conjugation experiment, we strongly recommend performing another round of desalting process. (OriGene recommends Zeba Spin Desalting Columns, 7KMWCO from Thermo Scientific)
Purification:	Purified from mouse ascites fluids or tissue culture supernatant by affinity chromatography (protein A/G)
Conjugation:	Unconjugated
Storage:	Store at -20°C as received.
Stability:	Stable for 12 months from date of receipt.
Predicted Protein Size:	15.8 kDa
Gene Name:	fibroblast growth factor 1
Database Link:	NP_000791 Entrez Gene 14164 Mouse Entrez Gene 25317 Rat Entrez Gene 2246 Human P05230



[View online »](#)

Background:

FGF1 is a member of the fibroblast growth factor (FGF) family. FGF family members possess broad mitogenic and cell survival activities, and are involved in a variety of biological processes, including embryonic development, cell growth, morphogenesis, tissue repair, tumor growth and invasion. This protein functions as a modifier of endothelial cell migration and proliferation, as well as an angiogenic factor. It acts as a mitogen for a variety of mesoderm- and neuroectoderm-derived cells in vitro, thus is thought to be involved in organogenesis. Three alternatively spliced variants encoding different isoforms have been described.

Synonyms:

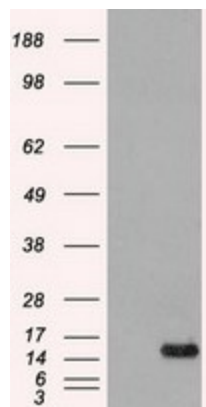
AFGF; ECGF; ECGF-beta; ECGFA; ECGFB; FGF-1; FGF-alpha; FGFA; GLIO703; HBGF-1; HBGF1

Protein Families:

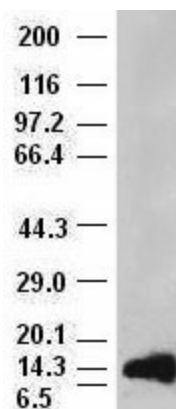
Druggable Genome, Secreted Protein

Protein Pathways:

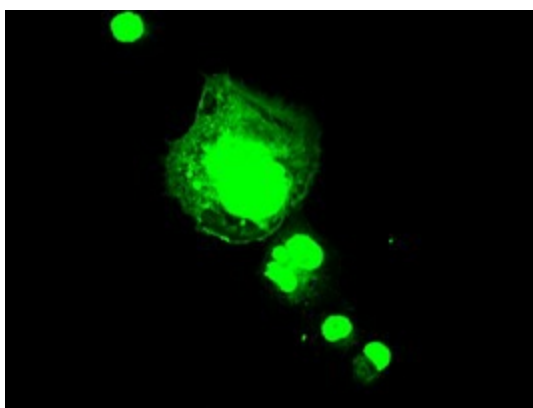
MAPK signaling pathway, Melanoma, Pathways in cancer, Regulation of actin cytoskeleton

Product images:


HEK293T cells were transfected with the pCMV6-ENTRY control (Cat# [PS100001], Left lane) or pCMV6-ENTRY AFGF (Cat# [RC207434], Right lane) cDNA for 48 hrs and lysed. Equivalent amounts of cell lysates (5 ug per lane) were separated by SDS-PAGE and immunoblotted with anti-AFGF (Cat# [TA500064]). Positive lysates [LY400278] (100ug) and [LC400278] (20ug) can be purchased separately from OriGene.



aFGF antibody (4D2) at 1:50000 dilution + recombinant Human aFGF (Cat# [RC207434])



Anti-AFGF mouse monoclonal antibody ([TA500064]) immunofluorescent staining of COS7 cells transiently transfected by pCMV6-ENTRY AFGF ([RC207434]).