

Product datasheet for **CF500055**

EPCAM Mouse Monoclonal Antibody [Clone ID: OTI4G10]

Product data:

Product Type:	Primary Antibodies
Clone Name:	OTI4G10
Applications:	IF, WB
Recommended Dilution:	WB: 1:500, IHC 1:50, IF (1:100)
Reactivity:	Human
Host:	Mouse
Isotype:	IgM
Clonality:	Monoclonal
Immunogen:	Recombinant protein expressed in E.coli corresponding to amino acids 24-265 of human EpCAM
Formulation:	Lyophilized powder (original buffer 1X PBS, pH 7.3, 8% trehalose)
Reconstitution Method:	For reconstitution, we recommend adding 100uL distilled water to a final antibody concentration of about 1 mg/mL. To use this carrier-free antibody for conjugation experiment, we strongly recommend performing another round of desalting process. (OriGene recommends Zeba Spin Desalting Columns, 7KMWCO from Thermo Scientific)
Purification:	Purified from mouse ascites fluids or tissue culture supernatant by affinity chromatography (protein A/G)
Conjugation:	Unconjugated
Storage:	Store at -20°C as received.
Stability:	Stable for 12 months from date of receipt.
Predicted Protein Size:	32.7 kDa
Gene Name:	epithelial cell adhesion molecule
Database Link:	NP_002345 Entrez Gene 4072 Human P16422



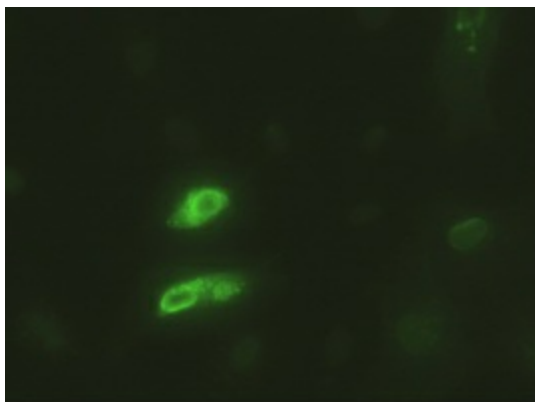
[View online »](#)

Background: EpCAM is a carcinoma-associated antigen and is a member of a family that includes at least two type I membrane proteins. This antigen is expressed on most normal epithelial cells and gastrointestinal carcinomas and functions as a homotypic calcium-independent cell adhesion molecule. The antigen is being used as a target for immunotherapy treatment of human carcinomas

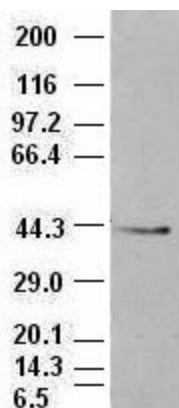
Synonyms: DIAR5; EGP-2; EGP40; EGP314; ESA; HNPCC8; KS1/4; KSA; M4S1; MIC18; MK-1; TACSTD1; TROP1

Protein Families: ES Cell Differentiation/IPS, Transmembrane

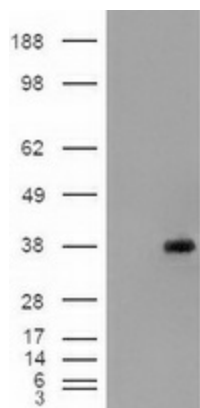
Product images:



Anti-EpCAM mouse monoclonal antibody ([TA500055]) immunofluorescent staining of HeLa cells transiently transfected by pCMV6-ENTRY EpCAM ([RC201989])



EpCAM antibody (4G10) at 1:500 dilution + MCF7 cell lysate



HEK293T cells were transfected with the pCMV6-ENTRY control (Left lane) or pCMV6-ENTRY EpCAM ([RC201989], Right lane) cDNA for 48 hrs and lysed. Equivalent amounts of cell lysates (5 ug per lane) were separated by SDS-PAGE and immunoblotted with anti-EpCAM. Positive lysates [LY400847] (100ug) and [LC400847] (20ug) can be purchased separately from OriGene.