

Product datasheet for **CF500038**

PDX1 Mouse Monoclonal Antibody [Clone ID: OTI2A12]

Product data:

Product Type:	Primary Antibodies
Clone Name:	OTI2A12
Applications:	IF, IHC, WB
Recommended Dilution:	WB 1:20000, IHC 1:50, IF 1:50~100
Reactivity:	Human, Mouse, Rat
Host:	Mouse
Isotype:	IgG1
Clonality:	Monoclonal
Immunogen:	Full length human recombinant protein of human PDX1 (NP_000200) produced in E.coli.
Formulation:	Lyophilized powder (original buffer 1X PBS, pH 7.3, 8% trehalose)
Reconstitution Method:	For reconstitution, we recommend adding 100uL distilled water to a final antibody concentration of about 1 mg/mL. To use this carrier-free antibody for conjugation experiment, we strongly recommend performing another round of desalting process. (OriGene recommends Zeba Spin Desalting Columns, 7KMWCO from Thermo Scientific)
Purification:	Purified from mouse ascites fluids or tissue culture supernatant by affinity chromatography (protein A/G)
Storage:	Store at -20°C as received.
Stability:	Stable for 12 months from date of receipt.
Predicted Protein Size:	30.6 kDa
Gene Name:	Homo sapiens pancreatic and duodenal homeobox 1 (PDX1), mRNA.
Database Link:	NP_000200 Entrez Gene 18609 MouseEntrez Gene 29535 RatEntrez Gene 3651 Human
Background:	Pdx1 is a transcriptional activator of several genes, including insulin, somatostatin, glucokinase, islet amyloid polypeptide, and glucose transporter type 2. It is involved in the early development of the pancreas and plays a major role in glucose-dependent regulation of insulin gene expression. Defects in PDX1 gene are a cause of pancreatic agenesis, which can lead to early-onset insulin-dependent diabetes mellitus (NIDDM), as well as maturity onset diabetes of the young type 4 (MODY4).
Synonyms:	GSF; IDX-1; IPF1; IUF1; MODY4; PAGEN1; PDX-1; STF-1

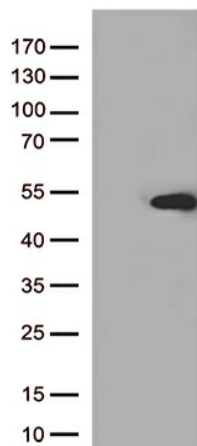


[View online »](#)

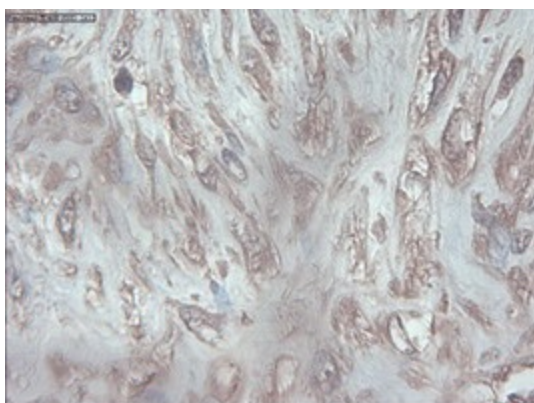
Protein Families: Embryonic stem cells, ES Cell Differentiation/IPS, Induced pluripotent stem cells, Transcription Factors

Protein Pathways: Maturity onset diabetes of the young, Type II diabetes mellitus

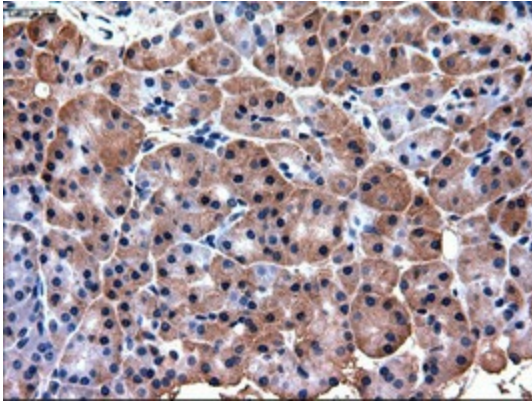
Product images:



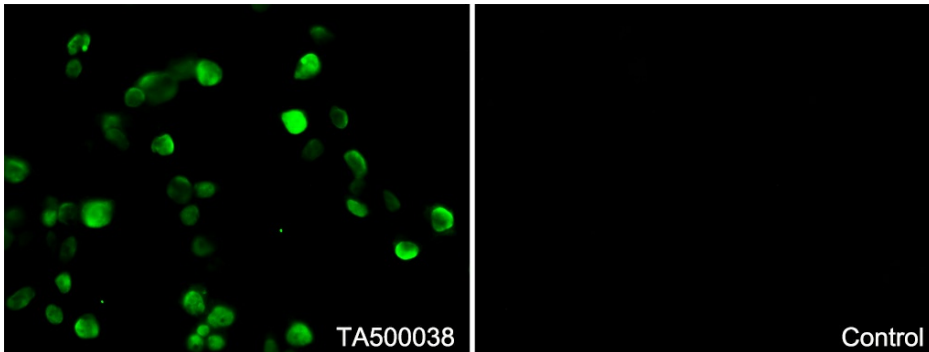
HEK293T cells were transfected with the pCMV6-ENTRY control (Left lane) or pCMV6-ENTRY PDX1 ([RC222354], Right lane) cDNA for 48 hrs and lysed. Equivalent amounts of cell lysates (5 ug per lane) were separated by SDS-PAGE and immunoblotted with anti-PDX1 (1:500).



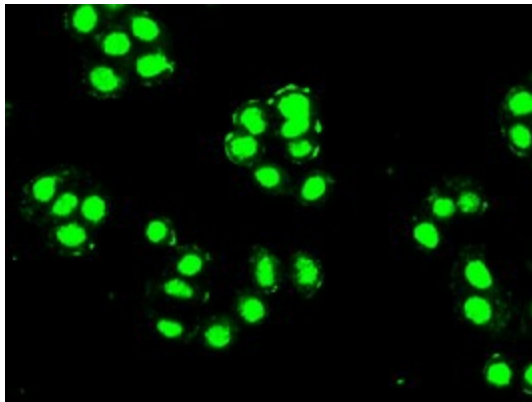
Immunohistochemical staining of paraffin-embedded Carcinoma of Human pancreas tissue using anti-PDX1 mouse monoclonal antibody. (Heat-induced epitope retrieval by 10mM citric buffer, pH6.0, 100°C for 10min, [TA500038])



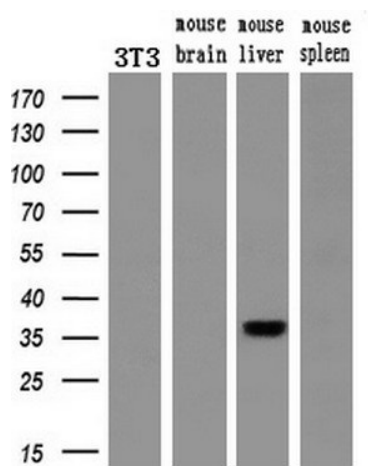
Immunohistochemical staining of paraffin-embedded Human pancreas tissue within the normal limits using anti-PDX1 mouse monoclonal antibody. (Heat-induced epitope retrieval by 10mM citric buffer, pH6.0, 100°C for 10min, [TA500038])



Immunofluorescent staining of 293T cells transfected by pCMV6-ENTRY PDX1 ([RC222354]) using anti-PDX1 antibody ([TA500038]/green, left). 293T cells transfected with empty vector served as a negative control (right) (1:100).



Immunofluorescent staining of HT29 cells using anti-PDX1 mouse monoclonal antibody ([TA500038]).



Western blot analysis of extracts (10ug) from a mouse cell line and 3 different mouse tissues by using anti-PDX1 monoclonal antibody (1:200).