

## Product datasheet for **CF500031**

### Neurotrophin 3 (NTF3) Mouse Monoclonal Antibody [Clone ID: OTI2D1]

#### Product data:

|                         |  |
|-------------------------|--|
| Product Type:           | Primary Antibodies   |
| Clone Name:             | OTI2D1   |
| Applications:           | WB   |
| Recommended Dilution:   | WB: 1:2000   |
| Reactivity:             | Human, Mouse, Rat  |
| Host:                   | Mouse  |
| Isotype:                | IgM  |
| Clonality:              | Monoclonal   |
| Immunogen:              | Recombinant protein expressed in E.coli corresponding to amino acids 139-257 of human NT3  |
| Formulation:            | Lyophilized powder (original buffer 1X PBS, pH 7.3, 8% trehalose)  |
| Reconstitution Method:  | For reconstitution, we recommend adding 100uL distilled water to a final antibody concentration of about 1 mg/mL. To use this carrier-free antibody for conjugation experiment, we strongly recommend performing another round of desalting process. (OriGene recommends Zeba Spin Desalting Columns, 7KMWCO from Thermo Scientific) |
| Purification:           | Purified from mouse ascites fluids or tissue culture supernatant by affinity chromatography (protein A/G)  |
| Conjugation:            | Unconjugated   |
| Storage:                | Store at -20°C as received.  |
| Stability:              | Stable for 12 months from date of receipt.   |
| Predicted Protein Size: | 27.4 kDa   |
| Gene Name:              | neurotrophin 3   |
| Database Link:          | <a href="#">NP_001096124</a><br><a href="#">Entrez Gene 18205 Mouse</a> <a href="#">Entrez Gene 81737 Rat</a> <a href="#">Entrez Gene 4908 Human</a><br><a href="#">P20783</a>   |



[View online »](#)

**Background:**

NT3 is a member of the neurotrophin family, that controls survival and differentiation of mammalian neurons. It is closely related to both nerve growth factor and brain-derived neurotrophic factor. It may be involved in the maintenance of the adult nervous system, and may affect development of neurons in the embryo when it is expressed in human placenta. NT3-deficient mice generated by gene targeting display severe movement defects of the limbs. The mature peptide of this protein is identical in all mammals examined including human, pig, rat and mouse

**Synonyms:**

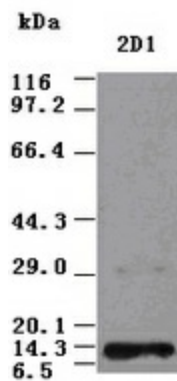
HDNF; NGF-2; NGF2; NT-3; NT3

**Protein Families:**

Druggable Genome, Secreted Protein

**Protein Pathways:**

MAPK signaling pathway, Neurotrophin signaling pathway

**Product images:**

NT3 antibody (2D1) at 1:2000 + Recombinant Human NT3 (Cat# [RC214281])