

## Product datasheet for **CF500030**

### Neurotrophin 3 (NTF3) Mouse Monoclonal Antibody [Clone ID: OTI5A2]

#### Product data:

Product Type:	Primary Antibodies
Clone Name:	OTI5A2
Applications:	IHC, WB
Recommended Dilution:	WB: 1:5000, IHC 1:50, IF (1:100)
Reactivity:	Human, Mouse, Rat
Host:	Mouse
Isotype:	IgG1
Clonality:	Monoclonal
Immunogen:	Recombinant protein expressed in E.coli corresponding to amino acids 139-257 of human NT3
Formulation:	Lyophilized powder (original buffer 1X PBS, pH 7.3, 8% trehalose)
Reconstitution Method:	For reconstitution, we recommend adding 100uL distilled water to a final antibody concentration of about 1 mg/mL. To use this carrier-free antibody for conjugation experiment, we strongly recommend performing another round of desalting process. (OriGene recommends Zeba Spin Desalting Columns, 7KMWCO from Thermo Scientific)
Purification:	Purified from mouse ascites fluids or tissue culture supernatant by affinity chromatography (protein A/G)
Conjugation:	Unconjugated
Storage:	Store at -20°C as received.
Stability:	Stable for 12 months from date of receipt.
Predicted Protein Size:	27.4 kDa
Gene Name:	neurotrophin 3
Database Link:	<a href="#">NP_001096124</a> <a href="#">Entrez Gene 18205 Mouse</a> <a href="#">Entrez Gene 81737 Rat</a> <a href="#">Entrez Gene 4908 Human</a> <a href="#">P20783</a>



[View online »](#)

**Background:**

NT3 is a member of the neurotrophin family, that controls survival and differentiation of mammalian neurons. It is closely related to both nerve growth factor and brain-derived neurotrophic factor. It may be involved in the maintenance of the adult nervous system, and may affect development of neurons in the embryo when it is expressed in human placenta. NT3-deficient mice generated by gene targeting display severe movement defects of the limbs. The mature peptide of this protein is identical in all mammals examined including human, pig, rat and mouse

**Synonyms:**

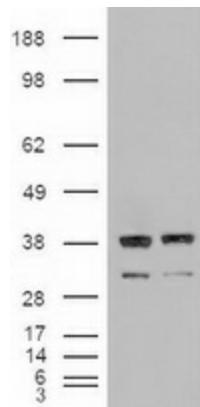
HDNF; NGF-2; NGF2; NT-3; NT3

**Protein Families:**

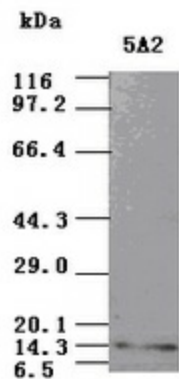
Druggable Genome, Secreted Protein

**Protein Pathways:**

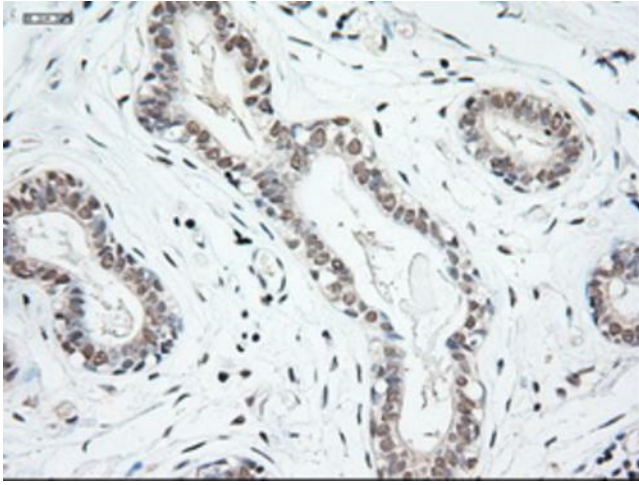
MAPK signaling pathway, Neurotrophin signaling pathway

**Product images:**


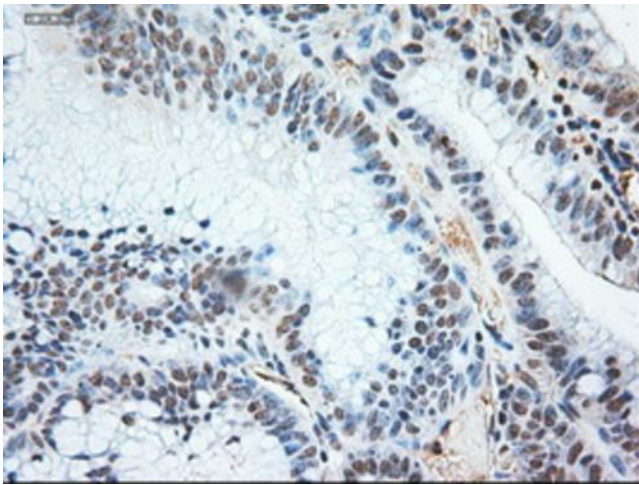
HEK293T cells were transfected with the pCMV6-ENTRY control (Left lane) or pCMV6-ENTRY NTF3 [RC214281], Right lane) cDNA for 48 hrs and lysed. Equivalent amounts of cell lysates (5 ug per lane) were separated by SDS-PAGE and immunoblotted with anti-NTF3. Positive lysates [LY420181] (100ug) and [LC420181] (20ug) can be purchased separately from OriGene.



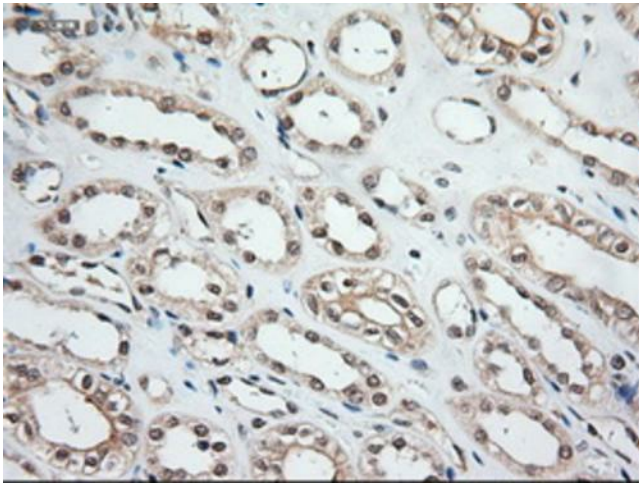
NT3 antibody (5A2) at 1:5000 + Mature Recombinant Human NT3 (14KDa) (Cat# [RC214281])



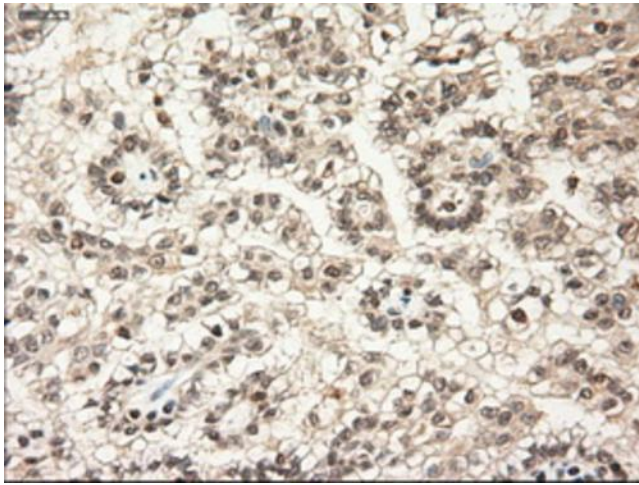
Immunohistochemical staining of paraffin-embedded breast within the normal limits using anti-NTF3 ([TA500030]) mouse monoclonal antibody. Heat-induced epitope retrieval by EDTA solution buffer pH 8.0 at 120°C for 3 min.



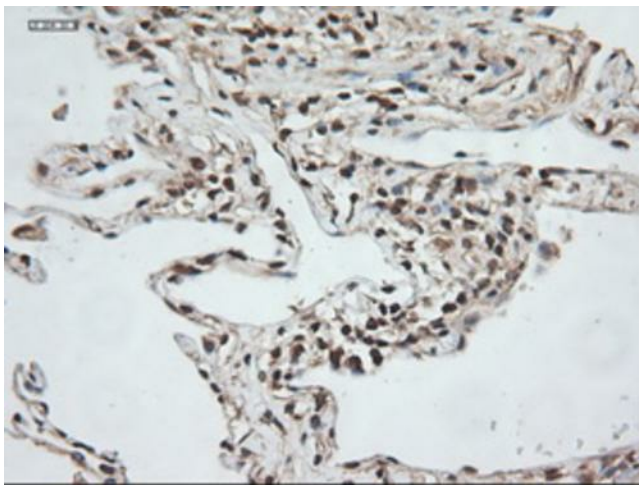
Immunohistochemical staining of paraffin-embedded Adenocarcinoma of colon using anti-NTF3 ([TA500030]) mouse monoclonal antibody. Heat-induced epitope retrieval by EDTA solution buffer pH 8.0 at 120°C for 3 min.



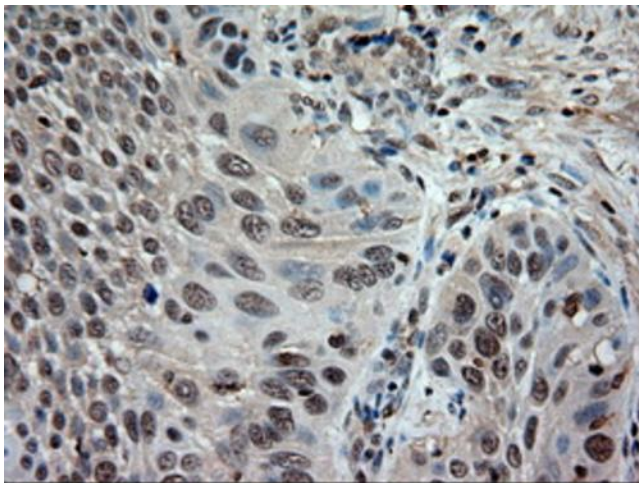
Immunohistochemical staining of paraffin-embedded kidney within the normal limits using anti-NTF3 ([TA500030]) mouse monoclonal antibody. Heat-induced epitope retrieval by EDTA solution buffer pH 8.0 at 120°C for 3 min.



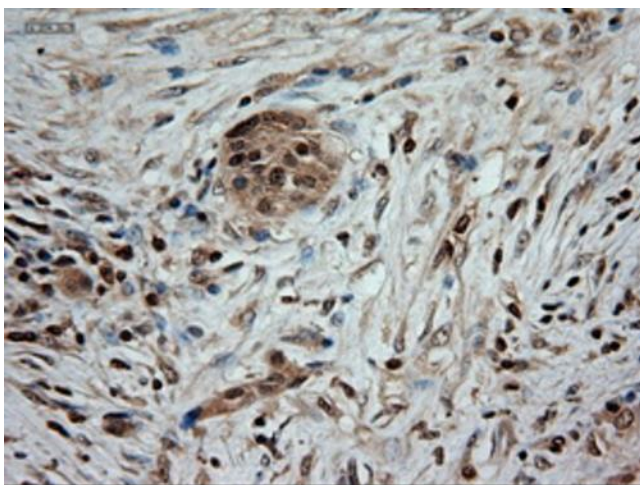
Immunohistochemical staining of paraffin-embedded Carcinoma of kidney using anti-NTF3 ([TA500030]) mouse monoclonal antibody. Heat-induced epitope retrieval by EDTA solution buffer pH 8.0 at 120°C for 3 min.



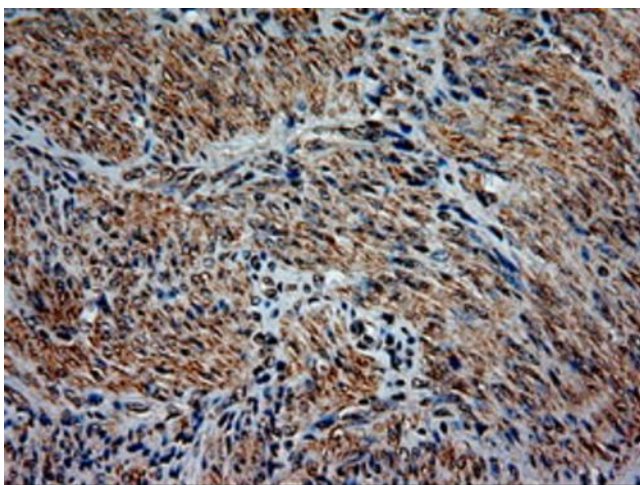
Immunohistochemical staining of paraffin-embedded lung within the normal limits using anti-NTF3 ([TA500030]) mouse monoclonal antibody. Heat-induced epitope retrieval by EDTA solution buffer pH 8.0 at 120°C for 3 min.



Immunohistochemical staining of paraffin-embedded Carcinoma of lung using anti-NTF3 ([TA500030]) mouse monoclonal antibody. Heat-induced epitope retrieval by EDTA solution buffer pH 8.0 at 120°C for 3 min.



Immunohistochemical staining of paraffin-embedded Carcinoma of pancreas using anti-NTF3 ([TA500030]) mouse monoclonal antibody. Heat-induced epitope retrieval by EDTA solution buffer pH 8.0 at 120°C for 3 min.



Immunohistochemical staining of paraffin-embedded endometrium within the normal limits using anti-NTF3 ([TA500030]) mouse monoclonal antibody. Heat-induced epitope retrieval by EDTA solution buffer pH 8.0 at 120°C for 3 min.