

Product datasheet for **CF190271**

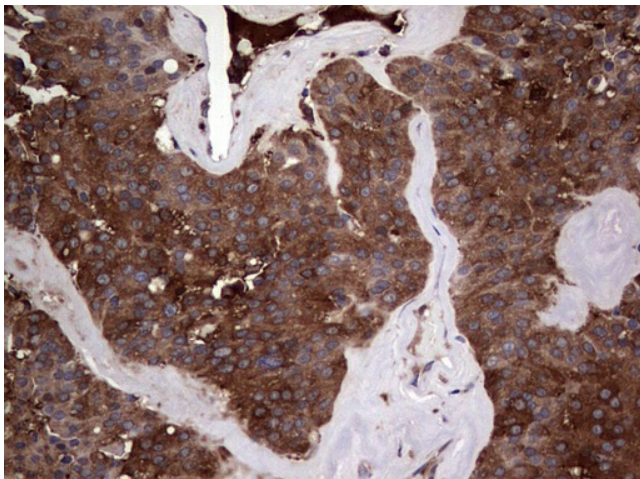
PKM2 Mouse Monoclonal Antibody [Clone ID: OT1E7]

Product data:

Product Type:	Primary Antibodies
Clone Name:	OT1E7
Applications:	IHC
Recommended Dilution:	IHC 1:150
Reactivity:	Human
Host:	Mouse
Isotype:	IgG1
Clonality:	Monoclonal
Immunogen:	Synthetic peptide corresponding to the region encoded by PKM gene M2 isoform.
Formulation:	Lyophilized powder (original buffer 1X PBS, pH 7.3, 8% trehalose)
Reconstitution Method:	For reconstitution, we recommend adding 100uL distilled water to a final antibody concentration of about 1 mg/mL. To use this carrier-free antibody for conjugation experiment, we strongly recommend performing another round of desalting process. (OriGene recommends Zeba Spin Desalting Columns, 7KMWCO from Thermo Scientific)
Purification:	Purified from mouse ascites fluids or tissue culture supernatant by affinity chromatography (protein A/G)
Conjugation:	Unconjugated
Storage:	Store at -20°C as received.
Stability:	Stable for 12 months from date of receipt.



[View online »](#)

Product images:

Immunohistochemical staining of paraffin-embedded Carcinoma of Human lung tissue using anti-PKM2 mouse monoclonal antibody. ([TA190271])