

## Product datasheet for **CF190083**

### CA19-9 Mouse Monoclonal Antibody [Clone ID: NS19-9]

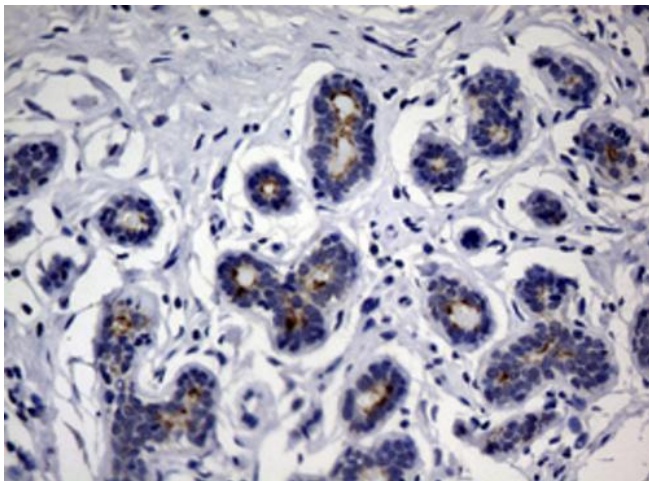
#### Product data:

Product Type:	Primary Antibodies
Clone Name:	NS19-9
Applications:	IF, IHC
Recommended Dilution:	IHC 1:150
Host:	Mouse
Isotype:	IgG1
Clonality:	Monoclonal
Immunogen:	SW1116 human colon carcinoma cell line
Formulation:	Lyophilized powder (original buffer 1X PBS, pH 7.3, 8% trehalose)
Reconstitution Method:	For reconstitution, we recommend adding 100uL distilled water to a final antibody concentration of about 1 mg/mL. To use this carrier-free antibody for conjugation experiment, we strongly recommend performing another round of desalting process. (OriGene recommends Zeba Spin Desalting Columns, 7KMWCO from Thermo Scientific)
Purification:	Purified from mouse ascites fluids or tissue culture supernatant by affinity chromatography (protein A/G)
Conjugation:	Unconjugated
Storage:	Store at -20°C as received.
Stability:	Stable for 12 months from date of receipt.

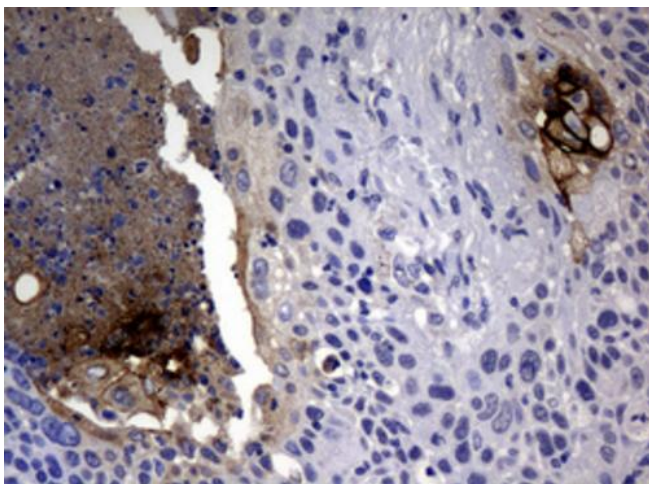


[View online »](#)

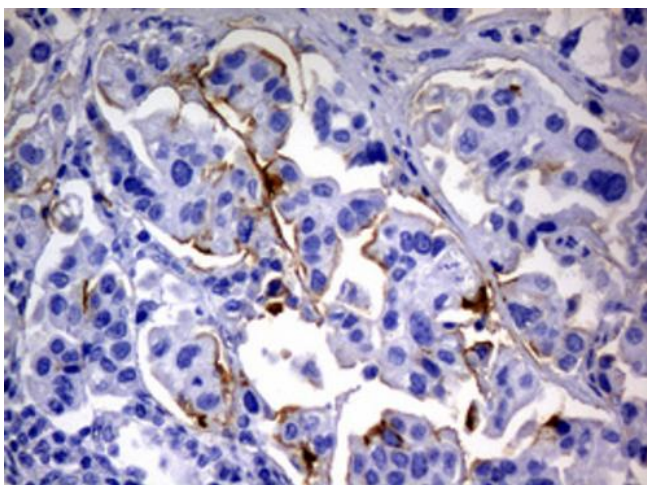
## Product images:



Immunohistochemical staining of paraffin-embedded Human breast tissue within the normal limits using anti-CA19-9 mouse monoclonal antibody. ([TA190083]). Heat-induced epitope retrieval by EDTA solution buffer pH 8.0 at 120°C for 3 min.



Immunohistochemical staining of paraffin-embedded Carcinoma of Human lung tissue using anti-CA19-9 mouse monoclonal antibody. ([TA190083]). Heat-induced epitope retrieval by EDTA solution buffer pH 8.0 at 120°C for 3 min.



Immunohistochemical staining of paraffin-embedded Carcinoma of Human bladder tissue using anti-CA19-9 mouse monoclonal antibody. ([TA190083]). Heat-induced epitope retrieval by EDTA solution buffer pH 8.0 at 120°C for 3 min.

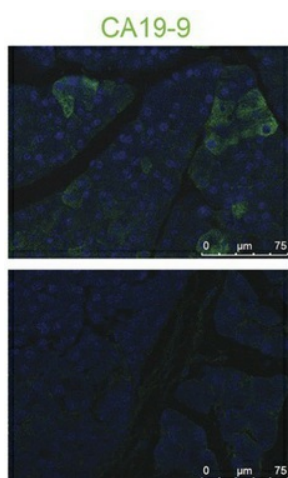


Figure from citation: Immunofluorescence staining of normal pancreas and neoplasm from 8-month old wild-type (upper panel) and Neurog3-Tsc1-/- mice (lower panel) by using anti-CA19-9 antibody, ductal cells stained positive for CA19-9 (Green), a specific marker for ductal cells, while neoplasm had no staining. Dilution: 1:100  
[View Citation](#)