

Product datasheet for **CF180039**

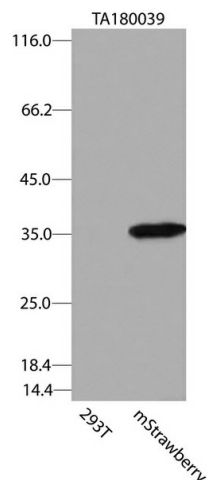
Carrier-free (BSA/glycerol-free) Mouse monoclonal mStrawberry antibody, clone OT12F6

Product data:

Product Type:	Tag Antibodies
Product Name:	Carrier-free (BSA/glycerol-free) Mouse monoclonal mStrawberry antibody, clone OT12F6
Clone Name:	OT12F6 (formerly 2F6)
Applications:	WB
Recommended Dilution:	WB: 1:2000
Reactivity:	mStrawberry
Host:	Mouse
Clonality:	Monoclonal
Immunogen:	This antibody is raised against a recombinant protein of mStrawberry expressed in HEK293 cells.
Isotype:	IgG2b
Formulation:	Lyophilized powder (original buffer 1X PBS, pH 7.3, 8% trehalose)
Reconstitution Method:	For reconstitution, we recommend adding 100uL distilled water to a final antibody concentration of about 1 mg/mL. To use this carrier-free antibody for conjugation experiment, we strongly recommend performing another round of desalting process. (OriGene recommends Zeba Spin Desalting Columns, 7KMWCO from Thermo Scientific)
Conjugation:	Unconjugated
Storage:	Store at -20°C.
Stability:	Stable for 1 year at -20°C from date of shipment.
Predicted Protein Size:	26.6 kDa

[View online »](#)

Product images:



HEK293T cells were transfected with the pCMV6-ENTRY control (Left lane) or pCMV6-ENTRY mStrawberry (Right lane) cDNA for 48 hrs and lysed. Equivalent amounts of cell lysates (5 ug per lane) were separated by SDS-PAGE and immunoblotted with anti-mStrawberry ([TA180039], 1:2000).