

## Product datasheet for **CD565917**

### Tissue Genomic DNA, Breast

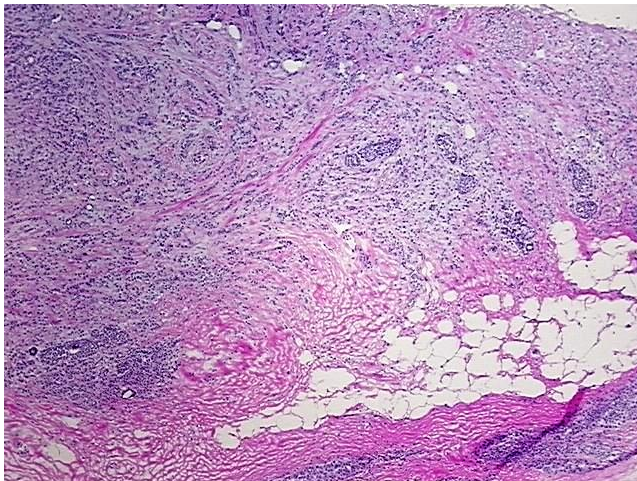
#### Product data:

Product Type:	Genomic DNA
Disease State:	Cancer
Diagnosis Category:	Breast Cancer
Tissue:	Breast
Frozen Sample ID:	FR65EE52AB
Case ID:	CI0000017929
Prep:	D
Vial ID:	DN00001C66
Tissue of Origin:	Breast
Site of Finding:	Breast
Appearance:	Tumor
Sample Diagnosis (from Pathology Verification):	Adenocarcinoma of breast, lobular
Normal:	40%
Lesional:	5%
Tumor:	50%
Tumor Hypo/Acellular Stroma:	10%
Tumor Hypercellular Stroma:	0%
Necrosis:	0%
Pathology Verification notes from H&E review:	Inflammation: Mild Lymphoplasmacytic infiltrate; Other Features/Comments: Tumor: 70% invasive lobular carcinoma; 30% lobular carcinoma in situ
Bioanalyzer Ratio (28S/18S):	1.88

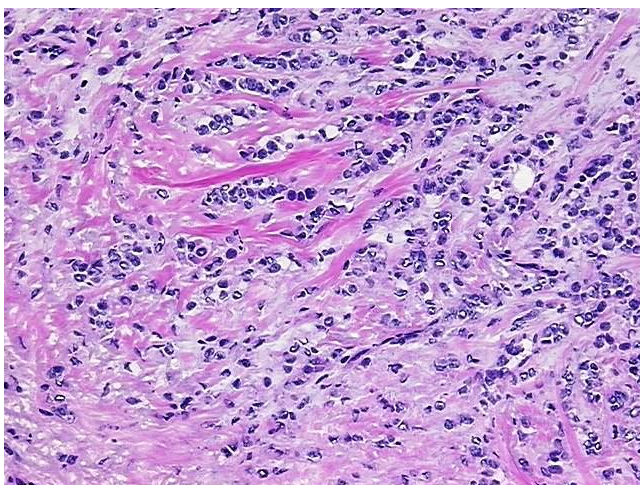

[View online »](#)

<b>CASE Diagnosis (from medical center path report):</b>	Adenocarcinoma of breast, lobular
<b>Age:</b>	57
<b>Gender:</b>	Female
<b>Race:</b>	White or Caucasian
<b>Tumor Grade:</b>	Nottingham G2: 6-7 points Intermediate combined grade (moderately favorable)
<b>Minimum Stage Grouping:</b>	IIA
<b>T (Extent of Primary Tumor):</b>	T2
<b>N (Lymph node metastasis):</b>	N0
<b>M (Distant metastasis):</b>	MX
<b>Storage:</b>	Store the total DNA -80°C.
<b>Stability:</b>	These products are stable for one year from date of shipping when stored at -80°C without repeated freeze/thaws.

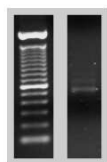
### Product images:



DNA - 4x.



DNA - 20x.



DNA PCR Image

