

## Product datasheet for **CD565373**

### Tissue Genomic DNA, Kidney

#### Product data:

Product Type:	Genomic DNA
Disease State:	Cancer
Diagnosis Category:	Renal Cell Carcinoma
Tissue:	Kidney
Frozen Sample ID:	FR00006294
Case ID:	CU0000001623
Prep:	A
Vial ID:	DN00000480
Tissue of Origin:	Kidney
Site of Finding:	Kidney
Appearance:	Tumor
Sample Diagnosis (from Pathology Verification):	Carcinoma of kidney, renal cell
Normal:	0%
Lesional:	0%
Tumor:	55%
Tumor Hypo/Acellular Stroma:	0%
Tumor Hypercellular Stroma:	0%
Necrosis:	45%
Pathology Verification notes from H&E review:	Tumor: predominantly papillary and clear cell type
Bioanalyzer Ratio (28S/18S):	1.95



[View online »](#)

**CASE Diagnosis (from medical center path report):** Carcinoma of kidney, renal cell, papillary

**Age:** 76

**Gender:** Male

**Tumor Grade:** Fuhrman G3: Nuclei very irregular

**Minimum Stage** IV

**Grouping:**

**T (Extent of Primary Tumor):** T3a

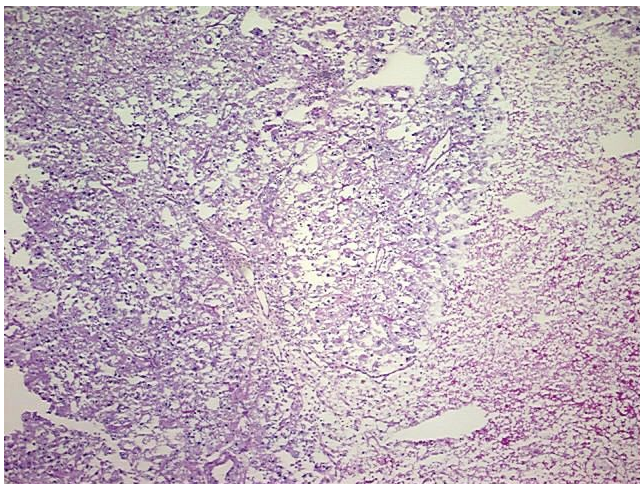
**N (Lymph node metastasis):** N0

**M (Distant metastasis):** M1

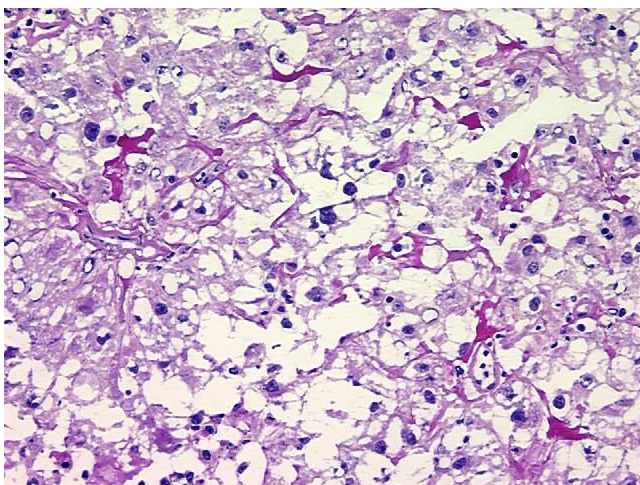
**Storage:** Store the total DNA -80°C.

**Stability:** These products are stable for one year from date of shipping when stored at -80°C without repeated freeze/thaws.

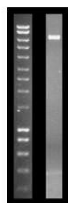
### Product images:



DNA - 4x.



DNA - 20x.



DNA PCR Image