

Product datasheet for **CD565343**

Tissue Genomic DNA, Lymphoid tissue

Product data:

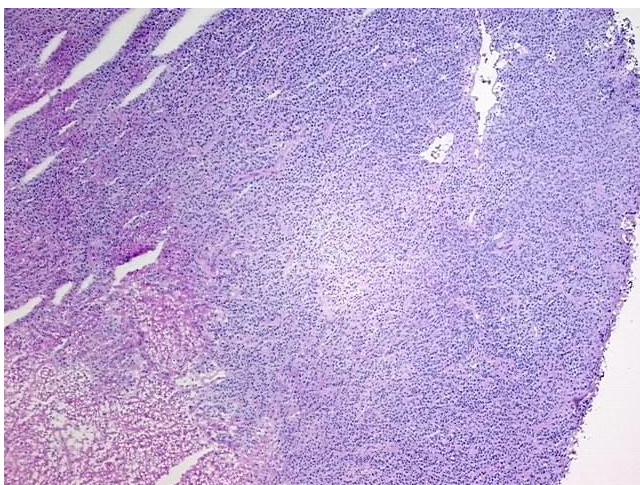
| | |
|---|---------------------------------|
| Product Type: | Genomic DNA |
| Disease State: | Cancer |
| Diagnosis Category: | Lymphoma |
| Tissue: | Lymphoid tissue |
| Frozen Sample ID: | FR00017545 |
| Case ID: | CU0000005107 |
| Prep: | A |
| Vial ID: | DN0000088E |
| Tissue of Origin: | Lymphoid tissue |
| Site of Finding: | Spleen |
| Appearance: | Tumor |
| Sample Diagnosis (from Pathology Verification): | Lymphoma, large B-cell, diffuse |
| Normal: | 0% |
| Lesional: | 0% |
| Tumor: | 70% |
| Tumor Hypo/Acellular Stroma: | 0% |
| Tumor Hypercellular Stroma: | 0% |
| Necrosis: | 30% |
| Bioanalyzer Ratio (28S/18S): | 2.04 |
| CASE Diagnosis (from medical center path report): | Lymphoma, large B-cell, diffuse |
| Age: | 61 |



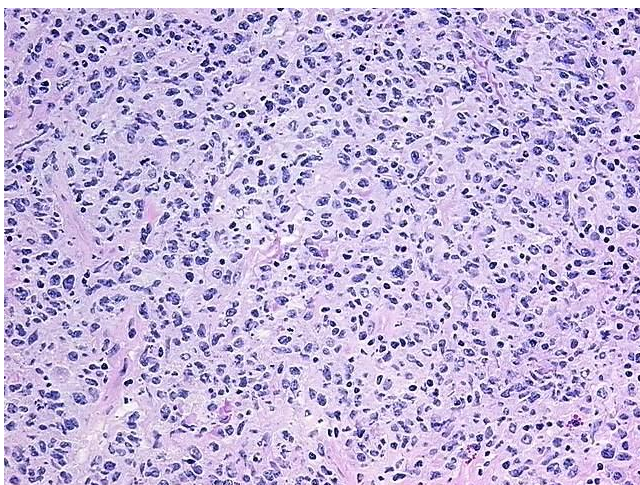
[View online »](#)

| | |
|------------------------------|--|
| Gender: | Male |
| Tumor Grade: | Not Reported |
| Minimum Stage Grouping: | IV |
| T (Extent of Primary Tumor): | Not applicable |
| N (Lymph node metastasis): | Not applicable |
| M (Distant metastasis): | Not applicable |
| Diagnostic Test Results: | CD3 ~ Leu4 ~ UCHT1 ! by IHC,Negative; Kappa light chain ! by IHC,Positive; CD5 ~ Leu1 ! by IHC,Negative; CD20 ~ B1 ~ Leu16 ! by IHC,Positive |
| Storage: | Store the total DNA -80°C. |
| Stability: | These products are stable for one year from date of shipping when stored at -80°C without repeated freeze/thaws. |

Product images:



DNA - 4x.



DNA - 20x.



DNA PCR Image