

## Product datasheet for **CD565183**

### Tissue Genomic DNA, Breast

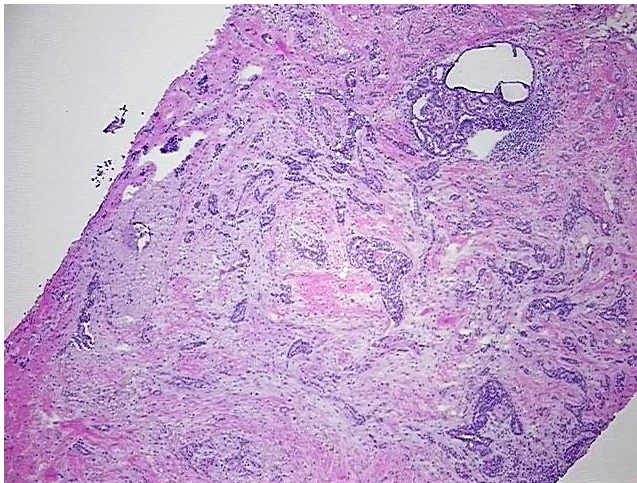
#### Product data:

|   |                                  |
|---|----------------------------------|
| Product Type:                                     | Genomic DNA                      |
| Disease State:                                    | Cancer                           |
| Diagnosis Category:                               | Breast Cancer                    |
| Tissue:   | Breast                           |
| Frozen Sample ID:                                 | FR00019363                       |
| Case ID:  | CU0000005655                     |
| Prep:   | C                                |
| Vial ID:  | DN0000092E                       |
| Tissue of Origin:                                 | Breast                           |
| Site of Finding:                                  | Breast                           |
| Appearance:                                       | Tumor                            |
| Sample Diagnosis (from Pathology Verification):   | Adenocarcinoma of breast, ductal |
| Normal:   | 35%                              |
| Lesional:   | 0%                               |
| Tumor:  | 45%                              |
| Tumor Hypo/Acellular Stroma:                      | 20%                              |
| Tumor Hypercellular Stroma:                       | 0%                               |
| Necrosis:   | 0%                               |
| Bioanalyzer Ratio (28S/18S):                      | 2                                |
| CASE Diagnosis (from medical center path report): | Adenocarcinoma of breast, ductal |
| Age:  | 57                               |

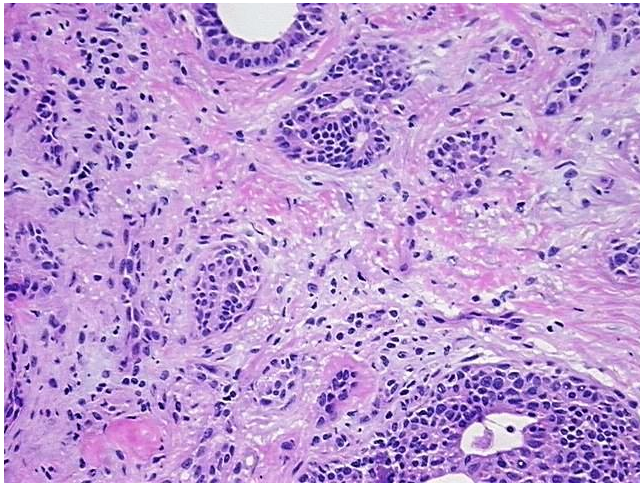


[View online »](#)

|                              |   |
|------------------------------|---|
| Gender:                      | Female  |
| Tumor Grade:                 | Nottingham G2: 6-7 points Intermediate combined grade (moderately favorable)  |
| Minimum Stage Grouping:      | I   |
| T (Extent of Primary Tumor): | T1b   |
| N (Lymph node metastasis):   | N0  |
| M (Distant metastasis):      | MX  |
| Diagnostic Test Results:     | Progesterone receptor ~ PR ! by IHC,Positive, weak; Estrogen receptor ~ ER ! by IHC,Positive; HER2 ~ ERBB2 ~ Neu ! by IHC,Negative; Cytokeratin AE1/AE3 ~ AE1/AE3 ! by IHC,Negative |
| Storage:                     | Store the total DNA -80°C.  |
| Stability:                   | These products are stable for one year from date of shipping when stored at -80°C without repeated freeze/thaws.  |

**Product images:**

DNA - 4x.



DNA - 20x.



DNA PCR Image