

Product datasheet for **CD565121**

Tissue Genomic DNA, Gastroesophageal junction

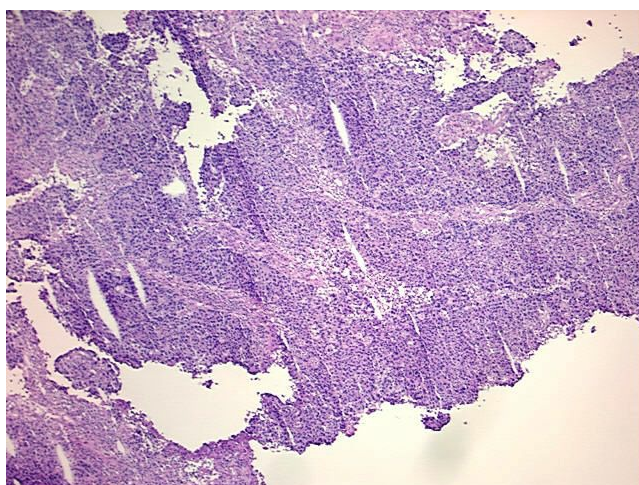
Product data:

Product Type:	Genomic DNA
Disease State:	Cancer
Diagnosis Category:	Esophageal/Gastroesophageal Cancer
Tissue:	Gastroesophageal junction
Frozen Sample ID:	FR0001646F
Case ID:	CU00000005280
Prep:	A
Vial ID:	DN0000165F
Tissue of Origin:	Gastroesophageal junction
Site of Finding:	Gastroesophageal junction
Appearance:	Tumor
Sample Diagnosis (from Pathology Verification):	Adenocarcinoma of gastroesophageal junction
Normal:	0%
Lesional:	0%
Tumor:	55%
Tumor Hypo/Acellular Stroma:	5%
Tumor Hypercellular Stroma:	30%
Necrosis:	10%
Bioanalyzer Ratio (28S/18S):	2.03
CASE Diagnosis (from medical center path report):	Adenocarcinoma of gastroesophageal junction
Age:	73

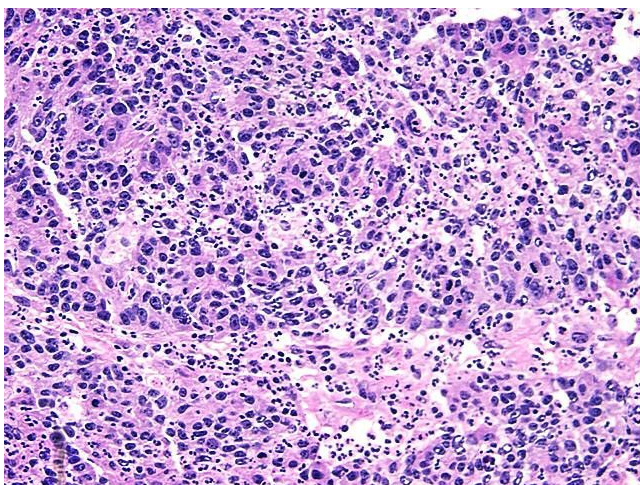

[View online »](#)

Gender:	Male
Tumor Grade:	AJCC G2: Moderately differentiated
Minimum Stage Grouping:	I
T (Extent of Primary Tumor):	T1
N (Lymph node metastasis):	N0
M (Distant metastasis):	MX
Storage:	Store the total DNA -80°C.
Stability:	These products are stable for one year from date of shipping when stored at -80°C without repeated freeze/thaws.

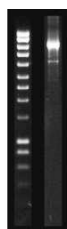
Product images:



DNA - 4x.



DNA - 20x.



DNA PCR Image