

Product datasheet for **CD565034**

Tissue Genomic DNA, Esophagus

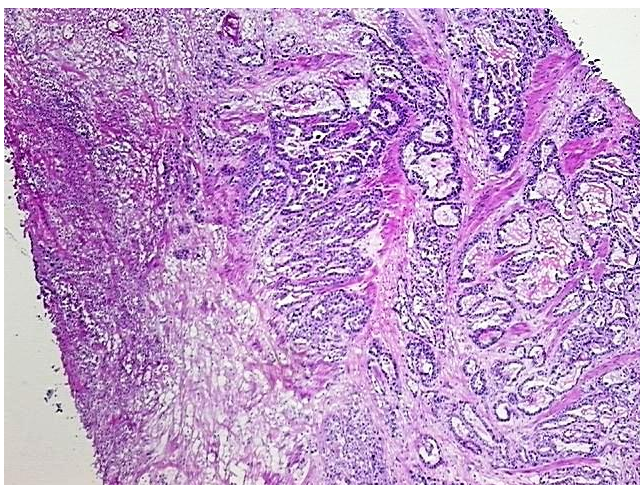
Product data:

Product Type:	Genomic DNA
Disease State:	Cancer
Diagnosis Category:	Esophageal/Gastroesophageal Cancer
Tissue:	Esophagus
Frozen Sample ID:	FR00038EC3
Case ID:	CI0000017680
Prep:	A
Vial ID:	DN0000164B
Tissue of Origin:	Esophagus
Site of Finding:	Stomach
Appearance:	Tumor
Sample Diagnosis (from Pathology Verification):	Adenocarcinoma of esophagus
Normal:	0%
Lesional:	0%
Tumor:	60%
Tumor Hypo/Acellular Stroma:	0%
Tumor Hypercellular Stroma:	10%
Necrosis:	30%
Pathology Verification notes from H&E review:	Tumor: local recurrence of direct extension
Bioanalyzer Ratio (28S/18S):	2.18

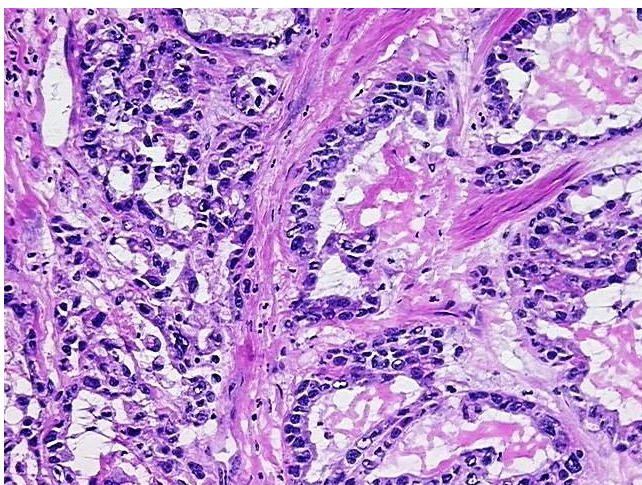

[View online »](#)

CASE Diagnosis (from medical center path report):	Adenocarcinoma of esophagus
Age:	71
Gender:	Male
Race:	White or Caucasian
Tumor Grade:	AJCC G2: Moderately differentiated
Minimum Stage Grouping:	III
T (Extent of Primary Tumor):	T3
N (Lymph node metastasis):	N1
M (Distant metastasis):	MX
Storage:	Store the total DNA -80°C.
Stability:	These products are stable for one year from date of shipping when stored at -80°C without repeated freeze/thaws.

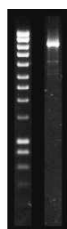
Product images:



DNA - 4x.



DNA - 20x.



DNA PCR Image