

## Product datasheet for **CD565006**

### Tissue Genomic DNA, Breast

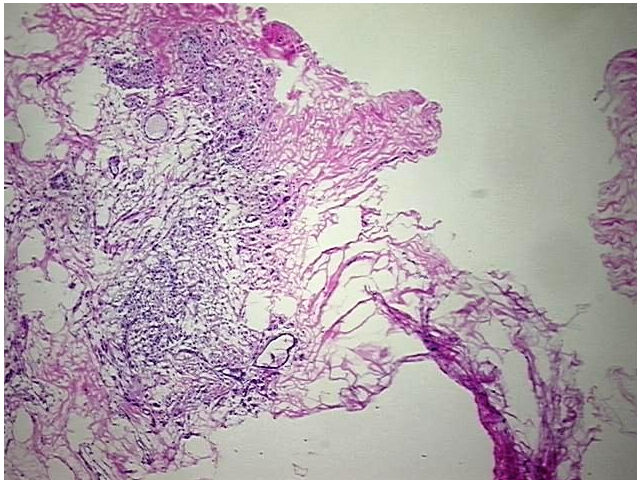
#### Product data:

Product Type:	Genomic DNA
Disease State:	Other Disease
Diagnosis Category:	Adenosis of Breast
Tissue:	Breast
Frozen Sample ID:	FR0003ED7D
Case ID:	CI0000018198
Prep:	A
Vial ID:	DN00000C19
Tissue of Origin:	Breast
Site of Finding:	Breast
Appearance:	Lesional
Sample Diagnosis (from Pathology Verification):	Adenosis of breast, sclerosing
Normal:	90%
Lesional:	10%
Tumor:	0%
Tumor Hypo/Acellular Stroma:	0%
Tumor Hypercellular Stroma:	0%
Necrosis:	0%
Pathology Verification notes from H&E review:	Non Tumor Structures: 5% Glandular epithelium, 55% Stroma, 40% Adipose tissue
Bioanalyzer Ratio (28S/18S):	1.79

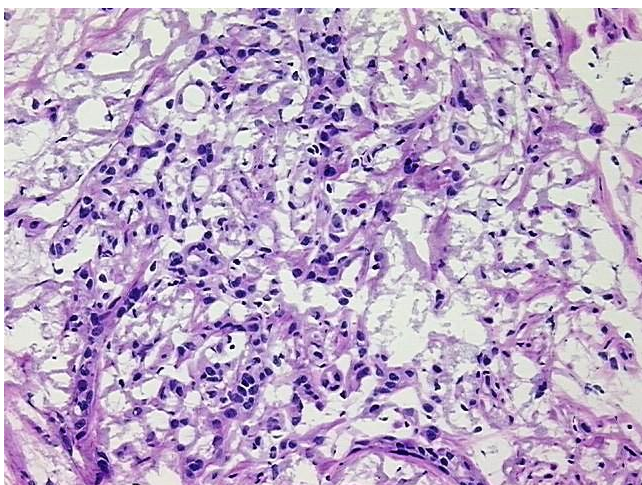

[View online »](#)

<b>CASE Diagnosis (from medical center path report):</b>	Adenocarcinoma of breast, lobular
<b>Age:</b>	65
<b>Gender:</b>	Female
<b>Race:</b>	Black or African American
<b>Tumor Grade:</b>	Nottingham G2: 6-7 points Intermediate combined grade (moderately favorable)
<b>Minimum Stage Grouping:</b>	I
<b>T (Extent of Primary Tumor):</b>	T1c
<b>N (Lymph node metastasis):</b>	N0
<b>M (Distant metastasis):</b>	MX
<b>Diagnostic Test Results:</b>	Progesterone receptor ~ PR ! by IHC,Negative; Estrogen receptor ~ ER ! by IHC,Positive, strong; HER2 ~ ERBB2 ~ Neu ! by IHC,Negative
<b>Storage:</b>	Store the total DNA -80°C.
<b>Stability:</b>	These products are stable for one year from date of shipping when stored at -80°C without repeated freeze/thaws.

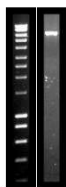
### Product images:



DNA - 4x.



DNA - 20x.



DNA PCR Image