

Product datasheet for **CD564991**

Tissue Genomic DNA, Breast

Product data:

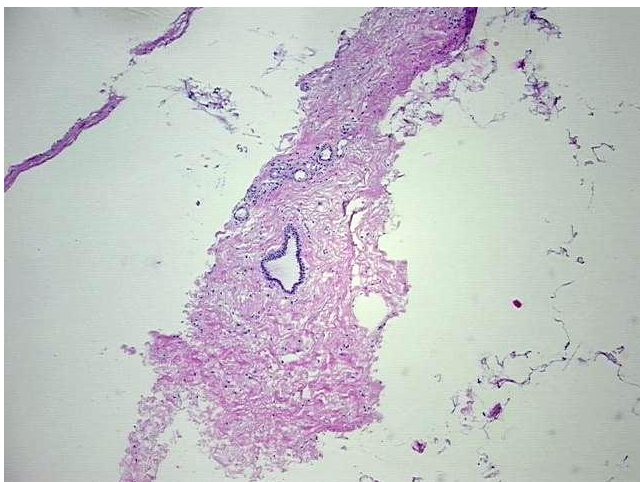
| | |
|---|--|
| Product Type: | Genomic DNA |
| Disease State: | Other Disease |
| Diagnosis Category: | Fibrocystic Breast |
| Tissue: | Breast |
| Frozen Sample ID: | FR6A38DE73 |
| Case ID: | CI0000017929 |
| Prep: | E |
| Vial ID: | DN00001C67 |
| Tissue of Origin: | Breast |
| Site of Finding: | Breast |
| Appearance: | Lesional |
| Sample Diagnosis (from Pathology Verification): | Fibrocystic changes to breast |
| Normal: | 0% |
| Lesional: | 100% |
| Tumor: | 0% |
| Tumor Hypo/Acellular Stroma: | 0% |
| Tumor Hypercellular Stroma: | 0% |
| Necrosis: | 0% |
| Pathology Verification notes from H&E review: | Non Tumor Structures: 20% Glandular epithelium, 70% Stroma, 10% Adipose tissue |
| Bioanalyzer Ratio (28S/18S): | 1.87 |



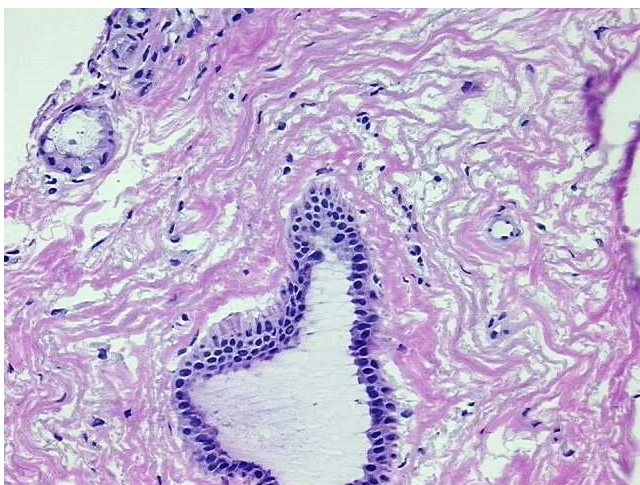
[View online »](#)

| | |
|--|--|
| CASE Diagnosis (from medical center path report): | Adenocarcinoma of breast, lobular |
| Age: | 57 |
| Gender: | Female |
| Race: | White or Caucasian |
| Tumor Grade: | Nottingham G2: 6-7 points Intermediate combined grade (moderately favorable) |
| Minimum Stage Grouping: | IIA |
| T (Extent of Primary Tumor): | T2 |
| N (Lymph node metastasis): | N0 |
| M (Distant metastasis): | MX |
| Diagnostic Test Results: | Cytokeratin (Pan) ~ Keratin, Pan ! by IHC,Negative; Progesterone receptor ~ PR ! by IHC,Positive; Estrogen receptor ~ ER ! by IHC,Positive; HER2 ~ ERBB2 ~ Neu ! by IHC,Negative |
| Storage: | Store the total DNA -80°C. |
| Stability: | These products are stable for one year from date of shipping when stored at -80°C without repeated freeze/thaws. |

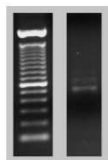
Product images:



DNA - 4x.



DNA - 20x.



DNA PCR Image