

## Product datasheet for **CD564923**

### Tissue Genomic DNA, Kidney

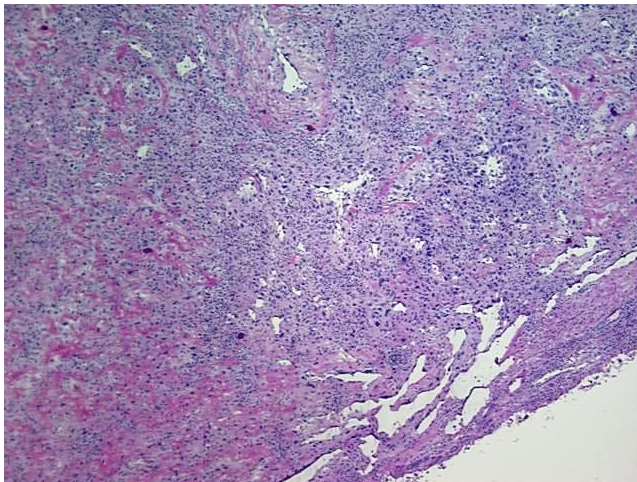
#### Product data:

Product Type:	Genomic DNA
Disease State:	Cancer
Diagnosis Category:	Renal Cell Carcinoma
Tissue:	Kidney
Frozen Sample ID:	FR000033E8
Case ID:	CU0000000999
Prep:	A
Vial ID:	DN0000048E
Tissue of Origin:	Kidney
Site of Finding:	Kidney
Appearance:	Tumor
Sample Diagnosis (from Pathology Verification):	Carcinoma of kidney, renal cell, clear cell, sarcomatoid features
Normal:	0%
Lesional:	0%
Tumor:	65%
Tumor Hypo/Acellular Stroma:	10%
Tumor Hypercellular Stroma:	0%
Necrosis:	25%
Pathology Verification notes from H&E review:	Inflammatory cells present
Bioanalyzer Ratio (28S/18S):	1.93

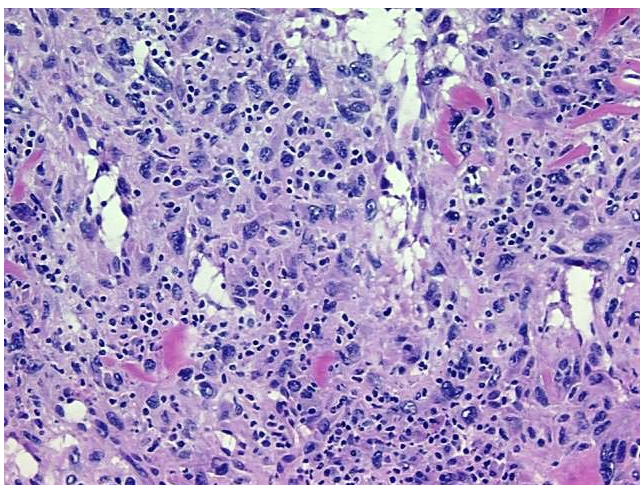


[View online »](#)

<b>CASE Diagnosis (from medical center path report):</b>	Carcinoma of kidney, renal cell, clear cell, sarcomatoid features
<b>Age:</b>	46
<b>Gender:</b>	Male
<b>Tumor Grade:</b>	Fuhrman G4: Nuclei bizarre and multilobated
<b>Minimum Stage Grouping:</b>	II
<b>T (Extent of Primary Tumor):</b>	T2
<b>N (Lymph node metastasis):</b>	N0
<b>M (Distant metastasis):</b>	MX
<b>Storage:</b>	Store the total DNA -80°C.
<b>Stability:</b>	These products are stable for one year from date of shipping when stored at -80°C without repeated freeze/thaws.

**Product images:**

DNA - 4x.



DNA - 20x.



DNA PCR Image