

## Product datasheet for **CD564908**

### Tissue Genomic DNA, Lung

#### Product data:

Product Type:	Genomic DNA
Disease State:	Cancer
Diagnosis Category:	Lung Cancer
Tissue:	Lung
Frozen Sample ID:	FR00000BF2
Case ID:	CU0000000336
Prep:	A
Vial ID:	DN00000311
Tissue of Origin:	Lung
Site of Finding:	Lung
Appearance:	Tumor
Sample Diagnosis (from Pathology Verification):	Carcinoma of lung, squamous cell
Normal:	5%
Lesional:	0%
Tumor:	64%
Tumor Hypo/Acellular Stroma:	20%
Tumor Hypercellular Stroma:	10%
Necrosis:	1%
Pathology Verification notes from H&E review:	Hypercellular stroma consists of dense mixed inflammatory infiltrate at normal/tumor interface
Bioanalyzer Ratio (28S/18S):	2.14



[View online »](#)

**CASE Diagnosis (from medical center path report):** Carcinoma of lung, squamous cell

**Age:** 51

**Gender:** Male

**Tumor Grade:** AJCC G3: Poorly differentiated

**Minimum Stage Grouping:** IIIB

**T (Extent of Primary Tumor):** T4

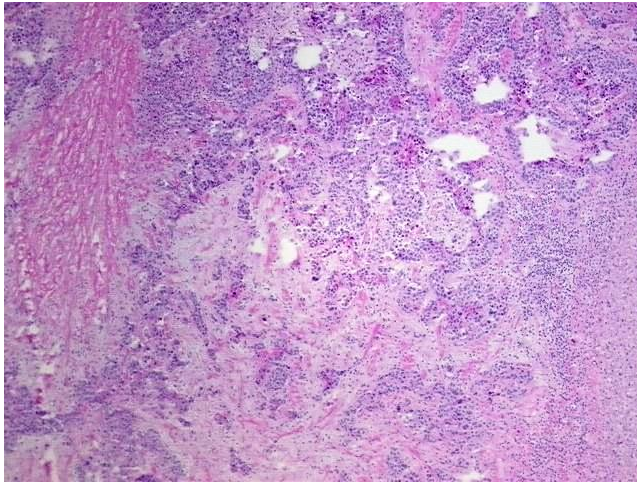
**N (Lymph node metastasis):** N1

**M (Distant metastasis):** MX

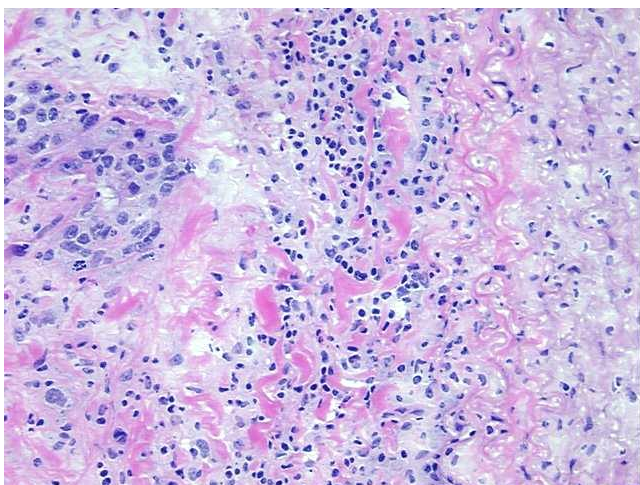
**Storage:** Store the total DNA -80°C.

**Stability:** These products are stable for one year from date of shipping when stored at -80°C without repeated freeze/thaws.

### Product images:



DNA - 4x.



DNA - 20x.



DNA PCR Image