

Product datasheet for **CD564801**

Tissue Genomic DNA, Liver

Product data:

Product Type:	Genomic DNA
Disease State:	Other Disease
Diagnosis Category:	Cirrhosis
Tissue:	Liver
Frozen Sample ID:	FR00035B4F
Case ID:	CU0000011777
Prep:	E
Vial ID:	DN00000972
Tissue of Origin:	Liver
Site of Finding:	Liver
Appearance:	Lesional
Sample Diagnosis (from Pathology Verification):	Cirrhosis of liver
Normal:	0%
Lesional:	100%
Tumor:	0%
Tumor Hypo/Acellular Stroma:	0%
Tumor Hypercellular Stroma:	0%
Necrosis:	0%
Pathology Verification notes from H&E review:	Inflammation: Moderate Mixed inflammatory infiltrate. Non Tumor Structures: 95% Lobules, 5% Triads. Other Features/Comments: Chronic active hepatitis with cirrhosis, compatible with Hepatitis B infection (per path report)
Bioanalyzer Ratio (28S/18S):	2


[View online »](#)

CASE Diagnosis (from medical center path report): Carcinoma of liver, hepatocellular

Age: 58

Gender: Female

Tumor Grade: Not Reported

Minimum Stage Grouping: I

T (Extent of Primary Tumor): T1

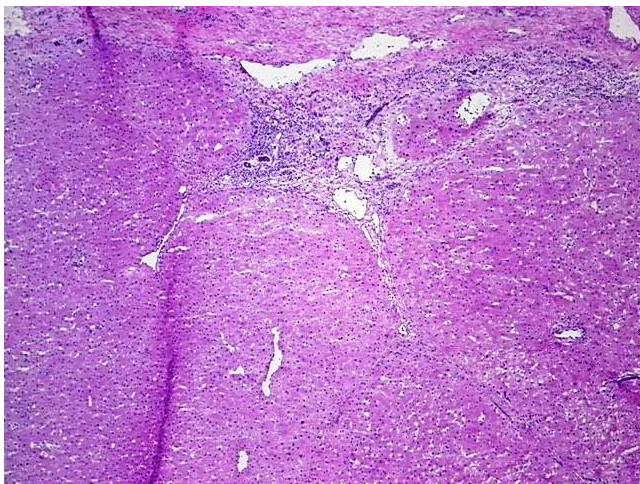
N (Lymph node metastasis): NX

M (Distant metastasis): MX

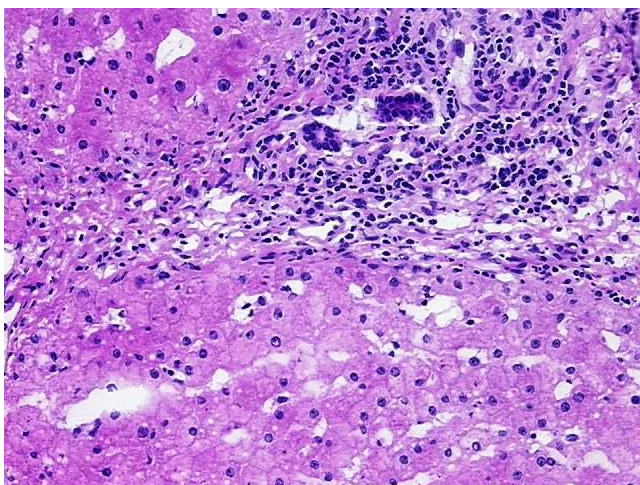
Storage: Store the total DNA -80°C.

Stability: These products are stable for one year from date of shipping when stored at -80°C without repeated freeze/thaws.

Product images:



DNA - 4x.



DNA - 20x.



DNA PCR Image