

## Product datasheet for **CD564761**

### Tissue Genomic DNA, Colon

#### Product data:

Product Type:	Genomic DNA
Disease State:	Cancer
Diagnosis Category:	Colorectal Cancer
Tissue:	Colon
Frozen Sample ID:	FR0002D241
Case ID:	CU0000010998
Prep:	A
Vial ID:	DN000003BD
Tissue of Origin:	Colon
Site of Finding:	Colon
Appearance:	Tumor
Sample Diagnosis (from Pathology Verification):	Adenocarcinoma of colon
Normal:	0%
Lesional:	0%
Tumor:	80%
Tumor Hypo/Acellular Stroma:	0%
Tumor Hypercellular Stroma:	20%
Necrosis:	0%
Pathology Verification notes from H&E review:	tumor: 30% invasive carcinoma, 70% adenoma. tumor stroma contains prominent lymphoplasmacytic infiltrate.
Bioanalyzer Ratio (28S/18S):	1.99

[View online »](#)

**CASE Diagnosis (from medical center path report):** Adenocarcinoma of colon

**Age:** 54

**Gender:** Male

**Tumor Grade:** AJCC G2: Moderately differentiated

**Minimum Stage Grouping:** IIIC

**T (Extent of Primary Tumor):** T4

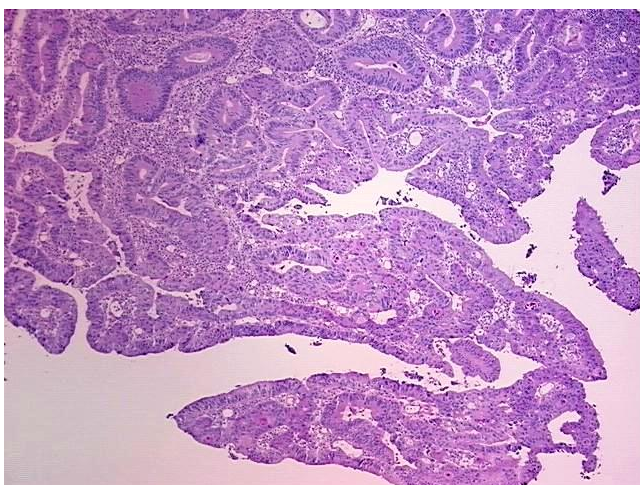
**N (Lymph node metastasis):** N2

**M (Distant metastasis):** MX

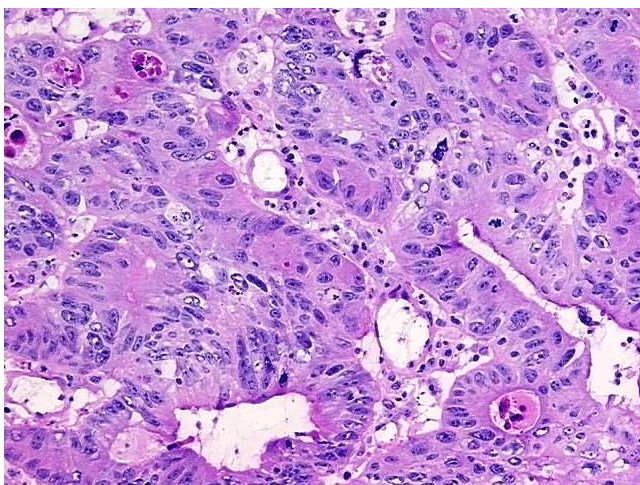
**Storage:** Store the total DNA -80°C.

**Stability:** These products are stable for one year from date of shipping when stored at -80°C without repeated freeze/thaws.

### Product images:



DNA - 4x.



DNA - 20x.



DNA PCR Image