

## Product datasheet for **CD564742**

### Tissue Genomic DNA, Ovary: right

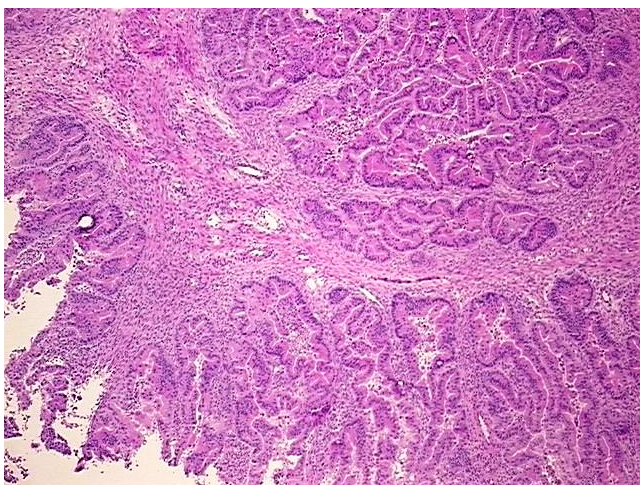
#### Product data:

Product Type:	Genomic DNA
Disease State:	Other Disease
Diagnosis Category:	Borderline Ovarian Tumor
Tissue:	Ovary
Frozen Sample ID:	FR00028A22
Case ID:	CU0000009341
Prep:	A
Vial ID:	DN000000039
Tissue of Origin:	Ovary: right
Site of Finding:	Ovary: right
Appearance:	Tumor
Sample Diagnosis (from Pathology Verification):	Tumor of ovary, borderline
Normal:	0%
Lesional:	0%
Tumor:	80%
Tumor Hypo/Acellular Stroma:	0%
Tumor Hypercellular Stroma:	15%
Necrosis:	5%
Bioanalyzer Ratio (28S/18S):	1.89
CASE Diagnosis (from medical center path report):	Tumor of ovary, borderline
Age:	29

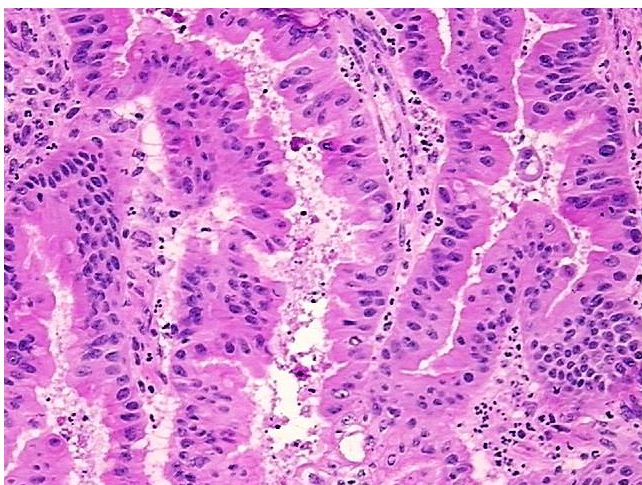

[View online »](#)

<b>Gender:</b>	Female
<b>Tumor Grade:</b>	AJCC GB: Borderline malignancy
<b>Minimum Stage Grouping:</b>	IA
<b>T (Extent of Primary Tumor):</b>	T1a
<b>N (Lymph node metastasis):</b>	N0
<b>M (Distant metastasis):</b>	MX
<b>Storage:</b>	Store the total DNA -80°C.
<b>Stability:</b>	These products are stable for one year from date of shipping when stored at -80°C without repeated freeze/thaws.

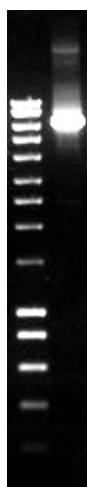
### Product images:



DNA - 4x.



DNA - 20x.



DNA PCR Image