

## Product datasheet for **CD564740**

### Tissue Genomic DNA, Kidney

#### Product data:

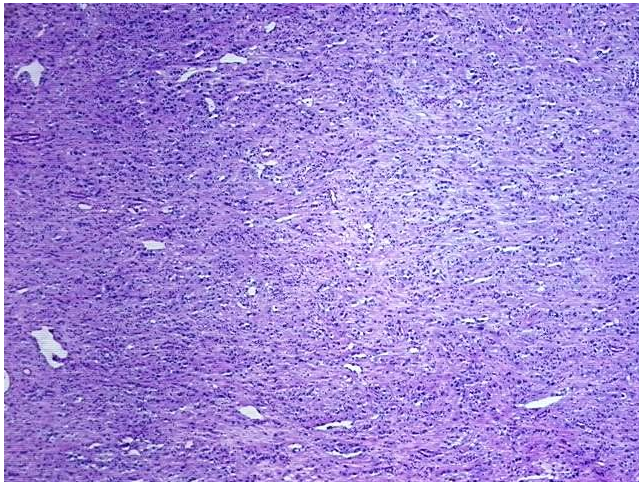
Product Type:	Genomic DNA
Disease State:	Cancer
Diagnosis Category:	Renal Cell Carcinoma
Tissue:	Kidney
Frozen Sample ID:	FR5B33EE85
Case ID:	CU0000009324
Prep:	A
Vial ID:	DN00000331
Tissue of Origin:	Kidney
Site of Finding:	Kidney
Appearance:	Tumor
Sample Diagnosis (from Pathology Verification):	Carcinoma of kidney, renal cell, sarcomatoid
Normal:	0%
Lesional:	0%
Tumor:	90%
Tumor Hypo/Acellular Stroma:	0%
Tumor Hypercellular Stroma:	5%
Necrosis:	5%
Bioanalyzer Ratio (28S/18S):	1.99
CASE Diagnosis (from medical center path report):	Carcinoma of kidney, renal cell, sarcomatoid
Age:	51



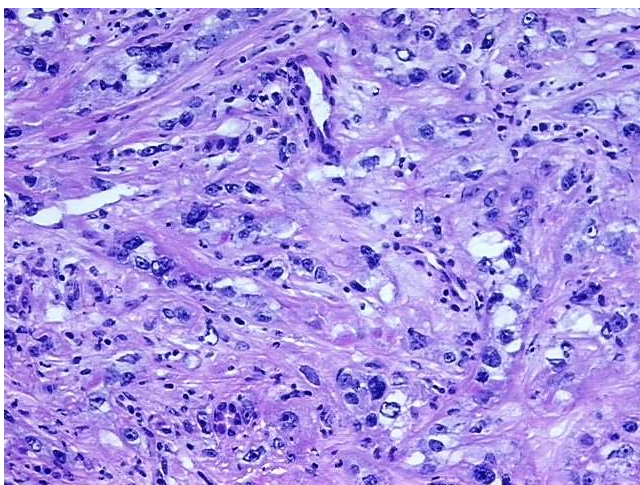
[View online »](#)

Gender:	Male
Tumor Grade:	Fuhrman G4: Nuclei bizarre and multilobated
Minimum Stage Grouping:	IV
T (Extent of Primary Tumor):	T3
N (Lymph node metastasis):	N2
M (Distant metastasis):	M1
Diagnostic Test Results:	CD227 ~ MUC1 ~ EMA ~ CA15-3 ! by IHC,Positive; S100 protein,Negative; HMB45 melanoma antigen ~ GP100 ! by IHC,Negative; von Willebrand Factor Antigen, plasma ~ Ristocetin Cofactor (RCF), plasma,Negative; Cytokeratin CAM5.2 ~ CAM5.2 ! by IHC,Pos
Storage:	Store the total DNA -80°C.
Stability:	These products are stable for one year from date of shipping when stored at -80°C without repeated freeze/thaws.

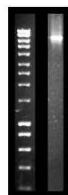
### Product images:



DNA - 4x.



DNA - 20x.



DNA PCR Image