

Product datasheet for **CD564717**

Tissue Genomic DNA, Breast

Product data:

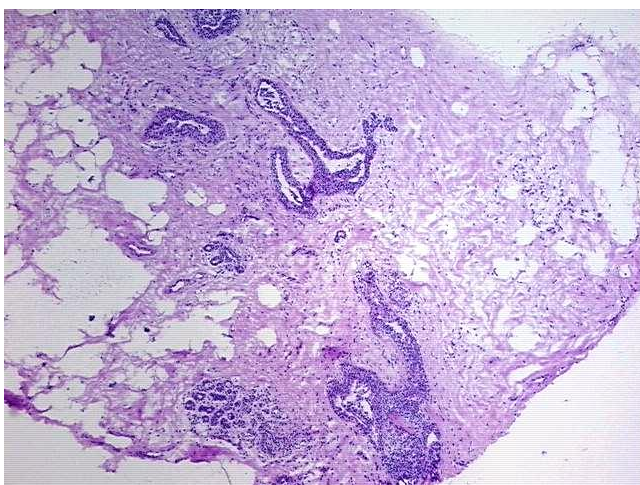
Product Type:	Genomic DNA
Disease State:	Other Disease
Diagnosis Category:	Hyperplasia
Tissue:	Breast
Frozen Sample ID:	FR0002DF1F
Case ID:	CU0000011109
Prep:	A
Vial ID:	DN000008C4
Tissue of Origin:	Breast
Site of Finding:	Breast
Appearance:	Lesional
Sample Diagnosis (from Pathology Verification):	Ductal hyperplasia of breast
Normal:	60%
Lesional:	40%
Tumor:	0%
Tumor Hypo/Acellular Stroma:	0%
Tumor Hypercellular Stroma:	0%
Necrosis:	0%
Pathology Verification notes from H&E review:	40% glandular epithelium, 10% stroma, 50% adipose tissue
Bioanalyzer Ratio (28S/18S):	1.96



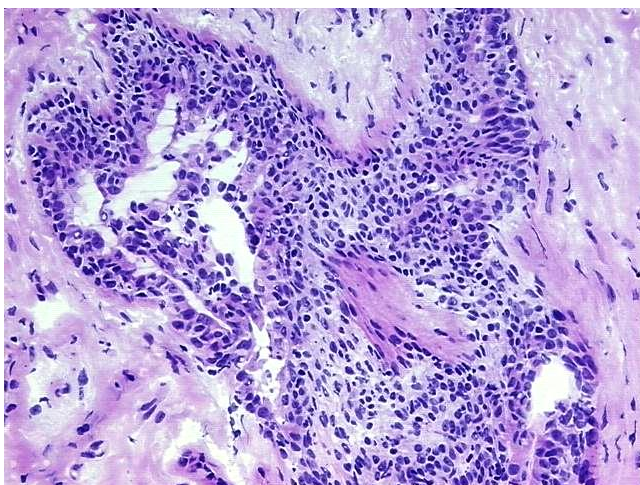
[View online »](#)

CASE Diagnosis (from medical center path report):	Adenocarcinoma of breast, lobular
Age:	52
Gender:	Female
Tumor Grade:	Nottingham G2: 6-7 points Intermediate combined grade (moderately favorable)
Minimum Stage Grouping:	IIA
T (Extent of Primary Tumor):	T2
N (Lymph node metastasis):	N0 (i+)
M (Distant metastasis):	MX
Storage:	Store the total DNA -80°C.
Stability:	These products are stable for one year from date of shipping when stored at -80°C without repeated freeze/thaws.

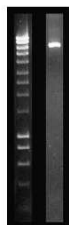
Product images:



DNA - 4x.



DNA - 20x.



DNA PCR Image