

Product datasheet for **CD564675**

Tissue Genomic DNA, Lung: right upper lobe

Product data:

Product Type:	Genomic DNA
Disease State:	Cancer
Diagnosis Category:	Lung Cancer
Tissue:	Lung
Frozen Sample ID:	FR0003BBB4
Case ID:	CU0000014428
Prep:	A
Vial ID:	DN00000466
Tissue of Origin:	Lung: right upper lobe
Site of Finding:	Lung: right upper lobe
Appearance:	Tumor
Sample Diagnosis (from Pathology Verification):	Carcinoma of lung, squamous cell
Normal:	0%
Lesional:	0%
Tumor:	80%
Tumor Hypo/Acellular Stroma:	0%
Tumor Hypercellular Stroma:	10%
Necrosis:	10%
Pathology Verification notes from H&E review:	Tumor Stroma (Cellular): Desmoplastic reaction. Inflammation: Moderate Mixed inflammatory infiltrate
Bioanalyzer Ratio (28S/18S):	1.92


[View online »](#)

CASE Diagnosis (from medical center path report): Carcinoma of lung, squamous cell

Age: 68

Gender: Female

Tumor Grade: AJCC G2: Moderately differentiated

Minimum Stage IB

Grouping:

T (Extent of Primary Tumor): T2

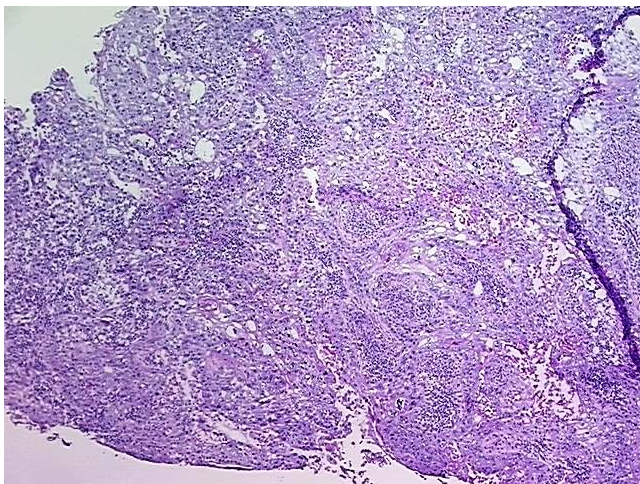
N (Lymph node metastasis): N0

M (Distant metastasis): MX

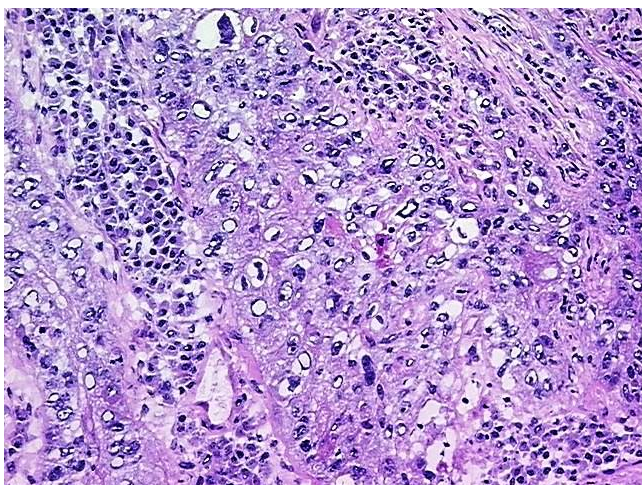
Storage: Store the total DNA -80°C.

Stability: These products are stable for one year from date of shipping when stored at -80°C without repeated freeze/thaws.

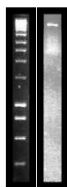
Product images:



DNA - 4x.



DNA - 20x.



DNA PCR Image