

Product datasheet for **CD564659**

Tissue Genomic DNA, Stomach

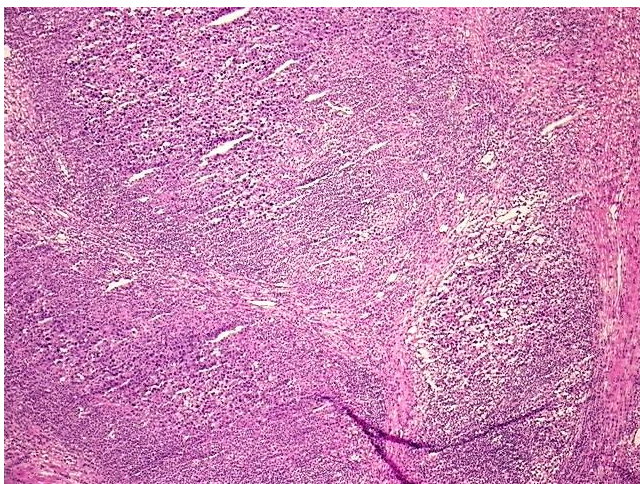
Product data:

Product Type:	Genomic DNA
Disease State:	Cancer
Diagnosis Category:	Stomach Cancer
Tissue:	Stomach
Frozen Sample ID:	FR000445B2
Case ID:	CU0000016216
Prep:	A
Vial ID:	DN00002095
Tissue of Origin:	Stomach
Site of Finding:	Stomach
Appearance:	Tumor
Sample Diagnosis (from Pathology Verification):	Adenocarcinoma of stomach
Normal:	0%
Lesional:	0%
Tumor:	85%
Tumor Hypo/Acellular Stroma:	0%
Tumor Hypercellular Stroma:	15%
Necrosis:	0%
Bioanalyzer Ratio (28S/18S):	1.93
CASE Diagnosis (from medical center path report):	Adenocarcinoma of stomach
Age:	67

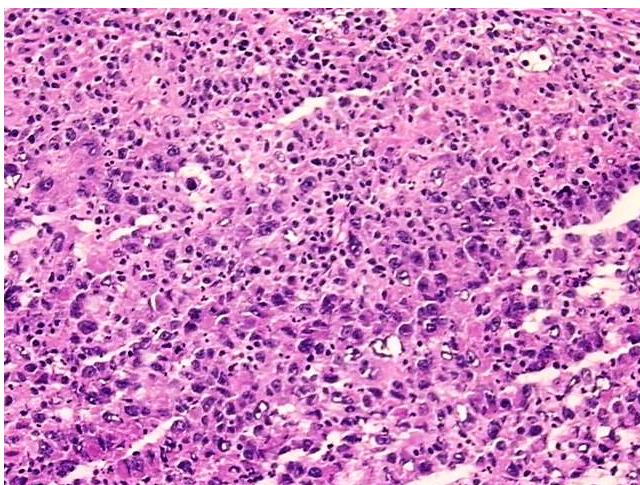

[View online »](#)

Gender:	Female
Tumor Grade:	AJCC G3: Poorly differentiated
Minimum Stage Grouping:	IA
T (Extent of Primary Tumor):	T1
N (Lymph node metastasis):	N0
M (Distant metastasis):	MX
Diagnostic Test Results:	ALK1 ~ NPM-ALK fusion ~ p80 ! by IHC,Negative; Synaptophysin ~ SYN ! by IHC,Positive; Human chorionic gonadotropin ~ HCG ! by IHC,Negative; Gastrin ! by IHC,Positive; Cytokeratin 7 ~ CK7 ! by IHC,Positive, strong; Cytokeratin 20 ~ CK20 ! by IH
Storage:	Store the total DNA -80°C.
Stability:	These products are stable for one year from date of shipping when stored at -80°C without repeated freeze/thaws.

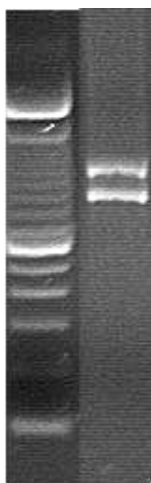
Product images:



DNA - 4x.



DNA - 20x.



DNA PCR Image