

Product datasheet for **CD564658**

Tissue Genomic DNA, Lymphoid tissue

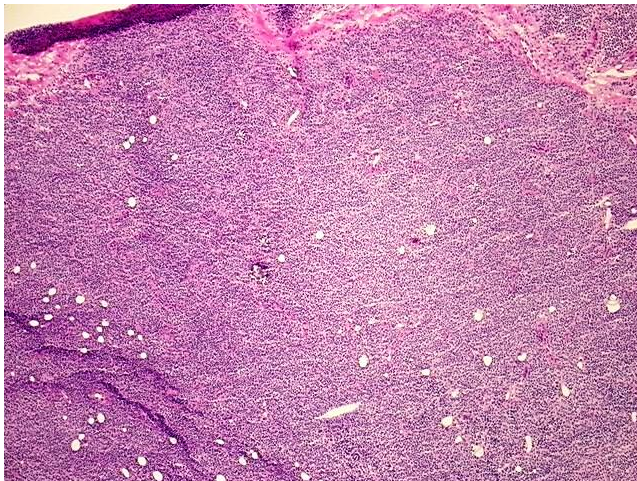
Product data:

Product Type:	Genomic DNA
Disease State:	Cancer
Diagnosis Category:	Lymphoma
Tissue:	Lymphoid tissue
Frozen Sample ID:	FR000433D2
Case ID:	CU0000018796
Prep:	A
Vial ID:	DN0000160B
Tissue of Origin:	Lymphoid tissue
Site of Finding:	Lymph node
Appearance:	Tumor
Sample Diagnosis (from Pathology Verification):	Lymphoma, mantle cell, recurrent
Normal:	5%
Lesional:	0%
Tumor:	95%
Tumor Hypo/Acellular Stroma:	0%
Tumor Hypercellular Stroma:	0%
Necrosis:	0%
Pathology Verification notes from H&E review:	Blastic variant
Bioanalyzer Ratio (28S/18S):	2.13

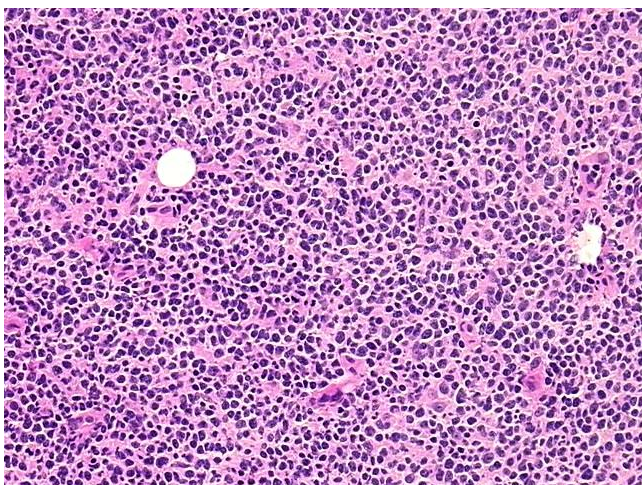

[View online »](#)

CASE Diagnosis (from medical center path report):	Lymphoma, mantle cell, recurrent
Age:	79
Gender:	Male
Tumor Grade:	Other Histologic Grade
Minimum Stage Grouping:	I
T (Extent of Primary Tumor):	Not applicable
N (Lymph node metastasis):	Not applicable
M (Distant metastasis):	Not applicable
Diagnostic Test Results:	Lambda light chain ! by IHC,Positive; CD5 ~ Leu1 ! by IHC,Positive
Storage:	Store the total DNA -80°C.
Stability:	These products are stable for one year from date of shipping when stored at -80°C without repeated freeze/thaws.

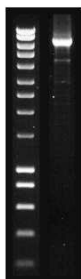
Product images:



DNA - 4x.



DNA - 20x.



DNA PCR Image