

Product datasheet for **CD564653**

Tissue Genomic DNA, Lung

Product data:

Product Type:	Genomic DNA
Disease State:	Cancer
Diagnosis Category:	Lung Cancer
Tissue:	Lung
Frozen Sample ID:	FR5B34476C
Case ID:	CU0000014710
Prep:	A
Vial ID:	DN000002E5
Tissue of Origin:	Lung
Site of Finding:	Lung
Appearance:	Tumor
Sample Diagnosis (from Pathology Verification):	Carcinoma of lung, non-small cell
Normal:	0%
Lesional:	0%
Tumor:	70%
Tumor Hypo/Acellular Stroma:	0%
Tumor Hypercellular Stroma:	20%
Necrosis:	10%
Pathology Verification notes from H&E review:	Tumor: note: Chromogranin and synaptophysin are negative in this type of tumor in 25% of cases, This section shows large cell carcinoma of lung, with neuroendocrine features
Bioanalyzer Ratio (28S/18S):	2.02


[View online »](#)

CASE Diagnosis (from medical center path report): Carcinoma of lung, non-small cell

Age: 83

Gender: Female

Tumor Grade: AJCC G3: Poorly differentiated

Minimum Stage Grouping: IA

T (Extent of Primary Tumor): T1

N (Lymph node metastasis): N0

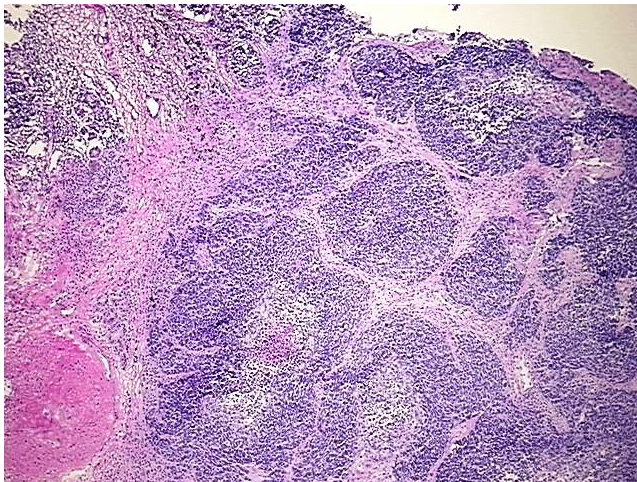
M (Distant metastasis): MX

Diagnostic Test Results: Cytokeratins (5 and 6) ~ CK5,6 ! by IHC,Positive; Cytokeratins (5 and 6) ~ CK5,6 ! by IHC,Positive; Neuron specific enolase ~ NSE ! by IHC,Positive, weak; Synaptophysin ~ SYN ! by IHC,Negative; Chromogranin A ~ Parathyroid secretory protein 1 !

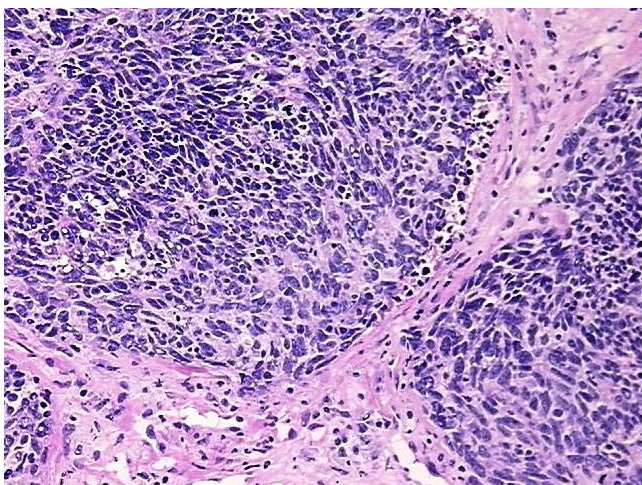
Storage: Store the total DNA -80°C.

Stability: These products are stable for one year from date of shipping when stored at -80°C without repeated freeze/thaws.

Product images:



DNA - 4x.



DNA - 20x.



DNA PCR Image