

## Product datasheet for **CD564640**

### Tissue Genomic DNA, Colon: sigmoid

#### Product data:

Product Type:	Genomic DNA
Disease State:	Cancer
Diagnosis Category:	Colorectal Cancer
Tissue:	Colon
Frozen Sample ID:	FR00036F43
Case ID:	CU0000014701
Prep:	A
Vial ID:	DN000001B3
Tissue of Origin:	Colon: sigmoid
Site of Finding:	Colon: sigmoid
Appearance:	Tumor
Sample Diagnosis (from Pathology Verification):	Adenocarcinoma of colon
Normal:	15%
Lesional:	0%
Tumor:	55%
Tumor Hypo/Acellular Stroma:	0%
Tumor Hypercellular Stroma:	25%
Necrosis:	5%
Pathology Verification notes from H&E review:	Tumor Stroma (Cellular): Desmoplastic reaction
Bioanalyzer Ratio (28S/18S):	2.01



[View online »](#)

CASE Diagnosis (from medical center path report): Adenocarcinoma of colon

Age: 88

Gender: Female

Tumor Grade: AJCC G4: Undifferentiated

Minimum Stage Grouping: IV

T (Extent of Primary Tumor): T4

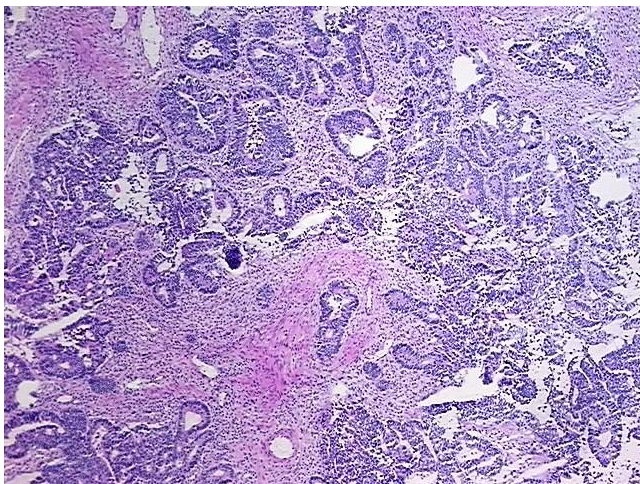
N (Lymph node metastasis): N1

M (Distant metastasis): M1

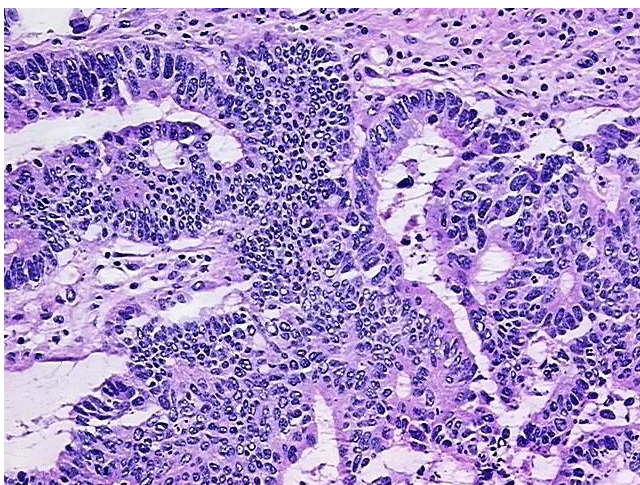
Storage: Store the total DNA -80°C.

Stability: These products are stable for one year from date of shipping when stored at -80°C without repeated freeze/thaws.

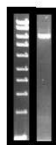
### Product images:



DNA - 4x.



DNA - 20x.



DNA PCR Image