

Product datasheet for **CD564608**

Tissue Genomic DNA, Lymphoid tissue

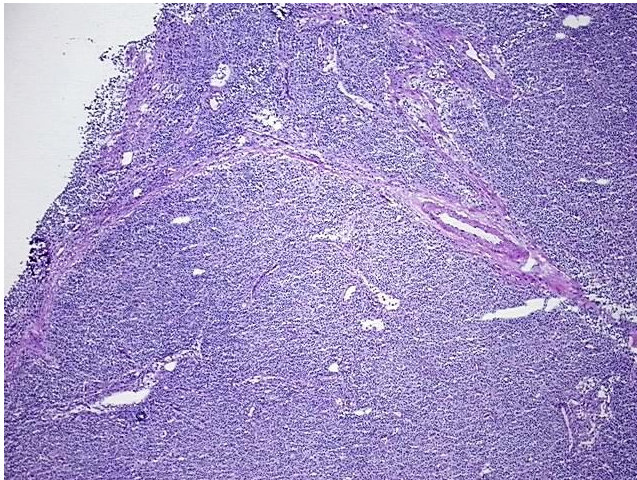
Product data:

Product Type:	Genomic DNA
Disease State:	Cancer
Diagnosis Category:	Lymphoma
Tissue:	Lymphoid tissue
Frozen Sample ID:	FR00032183
Case ID:	CU0000012602
Prep:	B
Vial ID:	DN000016BF
Tissue of Origin:	Lymphoid tissue
Site of Finding:	Lymph node
Appearance:	Tumor
Sample Diagnosis (from Pathology Verification):	Lymphoma, lymphoplasmacytic
Normal:	0%
Lesional:	0%
Tumor:	90%
Tumor Hypo/Acellular Stroma:	10%
Tumor Hypercellular Stroma:	0%
Necrosis:	0%
Bioanalyzer Ratio (28S/18S):	1.92
CASE Diagnosis (from medical center path report):	Lymphoma, lymphoplasmacytic
Age:	56

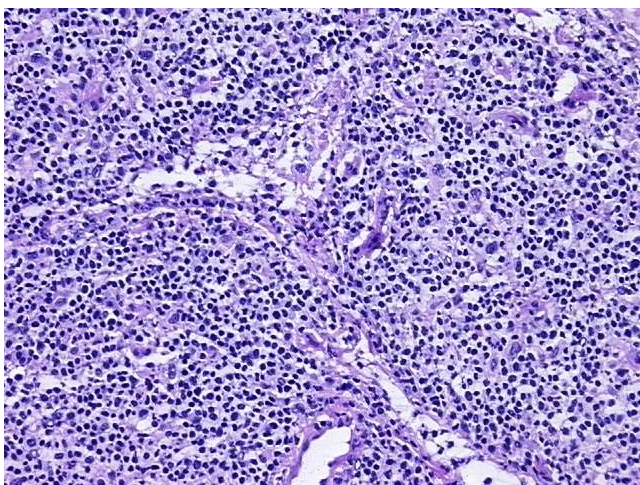

[View online »](#)

Gender:	Female
Tumor Grade:	Not Reported
Minimum Stage Grouping:	I
T (Extent of Primary Tumor):	Not applicable
N (Lymph node metastasis):	Not applicable
M (Distant metastasis):	Not applicable
Diagnostic Test Results:	CD3 ~ Leu4 ~ UCHT1 ! by IHC,Negative; CD11c ~ Integrin alpha X ~ LeuM5 ! by IHC,Positive; CD19 ~ B4 ~ Leu12 ! by IHC,Positive; CD22 ~ Leu14 ! by IHC,Negative; p53 oncoprotein ~ TP53 ! by IHC,Positive; Ki67 ~ MIB1 ! by IHC,Positive; Kappa
Storage:	Store the total DNA -80°C.
Stability:	These products are stable for one year from date of shipping when stored at -80°C without repeated freeze/thaws.

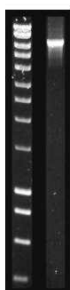
Product images:



DNA - 4x.



DNA - 20x.



DNA PCR Image