

## Product datasheet for **CD564565**

### Tissue Genomic DNA, Lung

#### Product data:

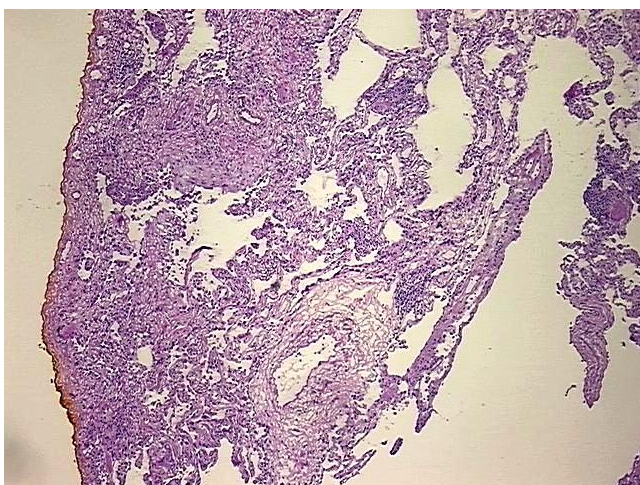
|   |  |
|---|--|
| Product Type:                                   | Genomic DNA                                  |
| Disease State:                                  | Other Disease                                |
| Diagnosis Category:                             | Chronic Obstructive Pulmonary Disease (COPD) |
| Tissue:   | Lung   |
| Frozen Sample ID:                               | FR0002597B                                   |
| Case ID:  | CU0000006035                                 |
| Prep:   | D  |
| Vial ID:  | DN000011F5                                   |
| Tissue of Origin:                               | Lung   |
| Site of Finding:                                | Lung   |
| Appearance:                                     | Lesional                                     |
| Sample Diagnosis (from Pathology Verification): | Emphysema                                    |
| Normal:   | 0%   |
| Lesional:                                       | 100%   |
| Tumor:  | 0%   |
| Tumor Hypo/Acellular Stroma:                    | 0%   |
| Tumor Hypercellular Stroma:                     | 0%   |
| Necrosis:                                       | 0%   |
| Pathology Verification notes from H&E review:   | no normal architecture                       |
| Bioanalyzer Ratio (28S/18S):                    | 1.99   |



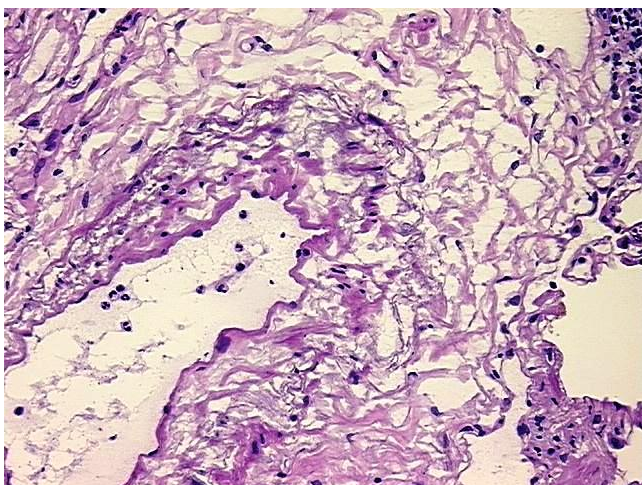
[View online »](#)

|   |  |
|---|--|
| CASE Diagnosis (from medical center path report): | Carcinoma of lung, squamous cell   |
| Age:  | 72   |
| Gender:   | Female   |
| Tumor Grade:                                      | AJCC G2: Moderately differentiated   |
| Minimum Stage Grouping:                           | IA   |
| T (Extent of Primary Tumor):                      | T1   |
| N (Lymph node metastasis):                        | N0   |
| M (Distant metastasis):                           | MX   |
| Storage:  | Store the total DNA -80°C.   |
| Stability:  | These products are stable for one year from date of shipping when stored at -80°C without repeated freeze/thaws. |

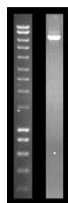
### Product images:



DNA - 4x.



DNA - 20x.



DNA PCR Image