

Product datasheet for **CD564464**

Tissue Genomic DNA, Breast

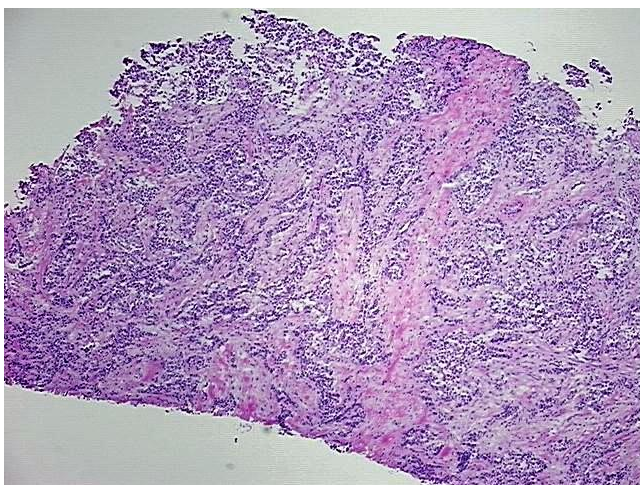
Product data:

| | |
|---|----------------------------------|
| Product Type: | Genomic DNA |
| Disease State: | Cancer |
| Diagnosis Category: | Breast Cancer |
| Tissue: | Breast |
| Frozen Sample ID: | FR0001FE44 |
| Case ID: | CU0000005836 |
| Prep: | A |
| Vial ID: | DN000008EE |
| Tissue of Origin: | Breast |
| Site of Finding: | Breast |
| Appearance: | Tumor |
| Sample Diagnosis (from Pathology Verification): | Adenocarcinoma of breast, ductal |
| Normal: | 0% |
| Lesional: | 0% |
| Tumor: | 65% |
| Tumor Hypo/Acellular Stroma: | 0% |
| Tumor Hypercellular Stroma: | 35% |
| Necrosis: | 0% |
| Bioanalyzer Ratio (28S/18S): | 1.9 |
| CASE Diagnosis (from medical center path report): | Adenocarcinoma of breast, ductal |
| Age: | 34 |

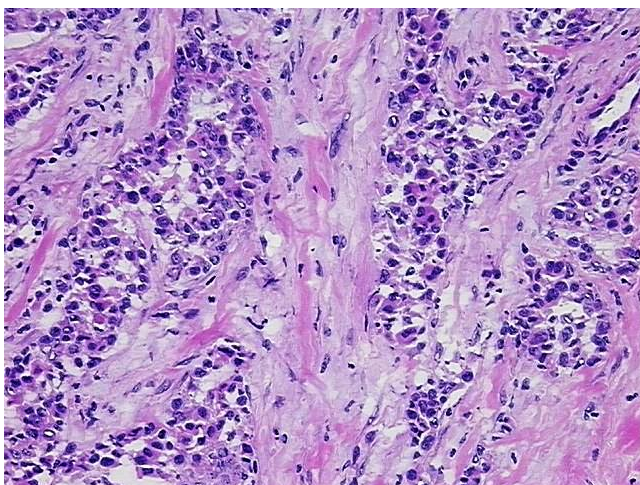


[View online »](#)

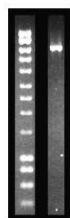
| | |
|------------------------------|--|
| Gender: | Female |
| Tumor Grade: | NSABP Grade: Nuclear 2 of 3 & Histologic 3 of 3 |
| Minimum Stage Grouping: | IIA |
| T (Extent of Primary Tumor): | T2 |
| N (Lymph node metastasis): | N0 |
| M (Distant metastasis): | MX |
| Storage: | Store the total DNA -80°C. |
| Stability: | These products are stable for one year from date of shipping when stored at -80°C without repeated freeze/thaws. |

Product images:

DNA - 4x.



DNA - 20x.



DNA PCR Image