

Product datasheet for **CD564450**

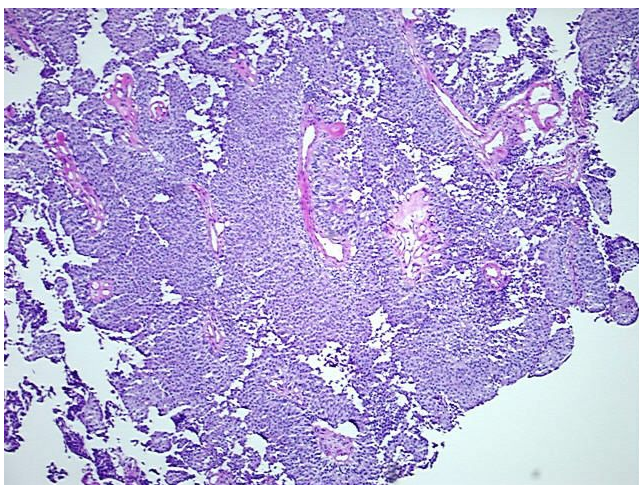
Tissue Genomic DNA, Urinary bladder

Product data:

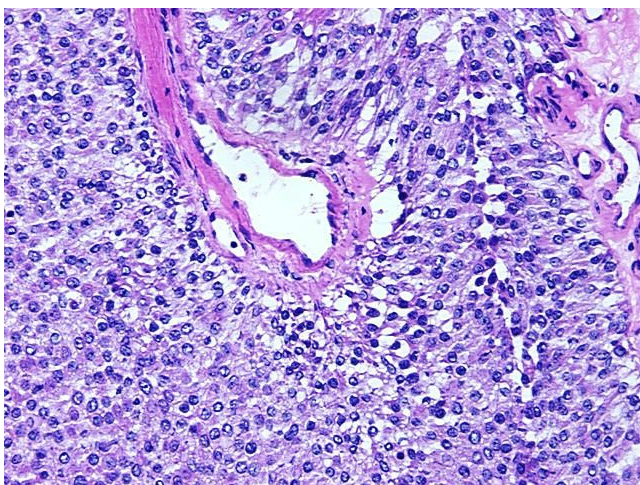
| | |
|---|---|
| Product Type: | Genomic DNA |
| Disease State: | Cancer |
| Diagnosis Category: | Bladder Cancer |
| Tissue: | Urinary bladder |
| Frozen Sample ID: | FR0001F015 |
| Case ID: | CU0000005811 |
| Prep: | A |
| Vial ID: | DN00000D26 |
| Tissue of Origin: | Urinary bladder |
| Site of Finding: | Urinary bladder |
| Appearance: | Tumor |
| Sample Diagnosis (from Pathology Verification): | Carcinoma of bladder, papillary transitional cell |
| Normal: | 0% |
| Lesional: | 0% |
| Tumor: | 90% |
| Tumor Hypo/Acellular Stroma: | 0% |
| Tumor Hypercellular Stroma: | 10% |
| Necrosis: | 0% |
| Bioanalyzer Ratio (28S/18S): | 2.06 |
| CASE Diagnosis (from medical center path report): | Carcinoma of bladder, papillary transitional cell |
| Age: | 66 |


[View online »](#)

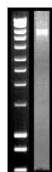
| | |
|------------------------------|--|
| Gender: | Male |
| Tumor Grade: | AJCC G1: Well differentiated |
| Minimum Stage Grouping: | 0a |
| T (Extent of Primary Tumor): | Ta |
| N (Lymph node metastasis): | N0 |
| M (Distant metastasis): | MX |
| Storage: | Store the total DNA -80°C. |
| Stability: | These products are stable for one year from date of shipping when stored at -80°C without repeated freeze/thaws. |

Product images:


DNA - 4x.



DNA - 20x.



DNA PCR Image