

Product datasheet for **CD564432**

Tissue Genomic DNA, Lung

Product data:

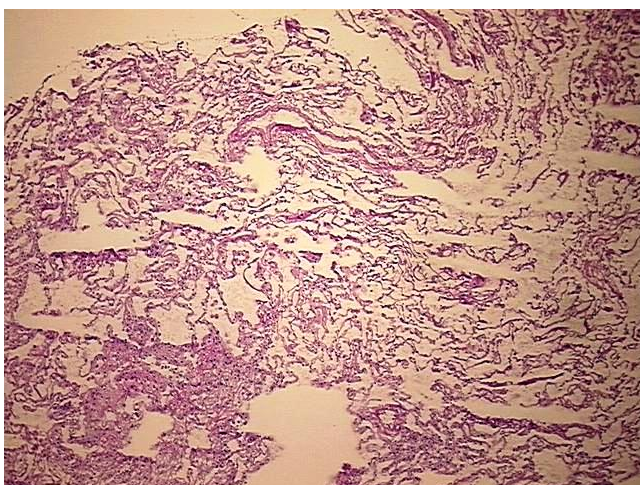
| | |
|---|---|
| Product Type: | Genomic DNA |
| Disease State: | Other Disease |
| Diagnosis Category: | Pneumonia |
| Tissue: | Lung |
| Frozen Sample ID: | FR5B33B4AC |
| Case ID: | CU0000006798 |
| Prep: | F |
| Vial ID: | DN00000C2A |
| Tissue of Origin: | Lung |
| Site of Finding: | Lung |
| Appearance: | Lesional |
| Sample Diagnosis (from Pathology Verification): | Pneumonia, organizing |
| Normal: | 0% |
| Lesional: | 100% |
| Tumor: | 0% |
| Tumor Hypo/Acellular Stroma: | 0% |
| Tumor Hypercellular Stroma: | 0% |
| Necrosis: | 0% |
| Pathology Verification notes from H&E review: | Non Tumor Structures: 100% No normal architecture |
| Bioanalyzer Ratio (28S/18S): | 1.8 |



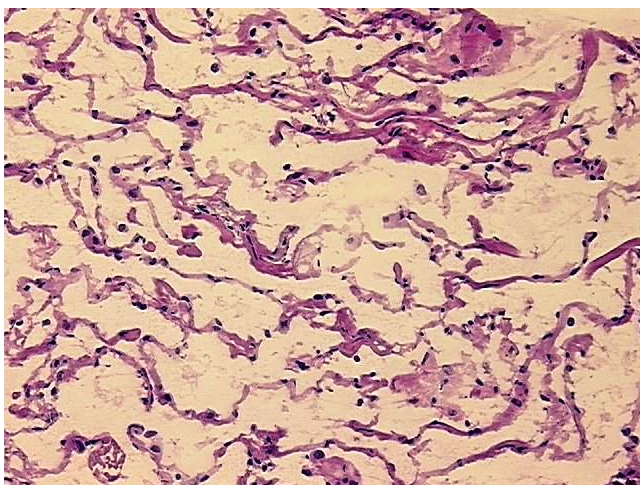
[View online »](#)

| | |
|---|--|
| CASE Diagnosis (from medical center path report): | Carcinoma of lung, squamous cell |
| Age: | 77 |
| Gender: | Male |
| Tumor Grade: | AJCC G3: Poorly differentiated |
| Minimum Stage Grouping: | IV |
| T (Extent of Primary Tumor): | T2 |
| N (Lymph node metastasis): | N0 |
| M (Distant metastasis): | M1 |
| Storage: | Store the total DNA -80°C. |
| Stability: | These products are stable for one year from date of shipping when stored at -80°C without repeated freeze/thaws. |

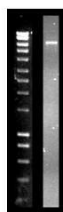
Product images:



DNA - 4x.



DNA - 20x.



DNA PCR Image