

Product datasheet for **CD564399**

Tissue Genomic DNA, Lung

Product data:

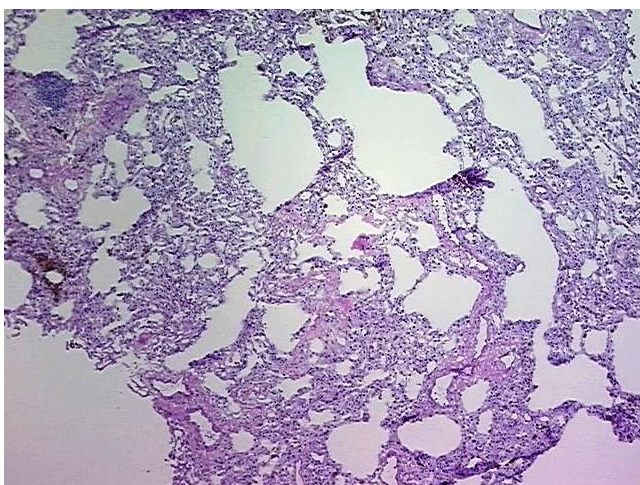
Product Type:	Genomic DNA
Disease State:	Other Disease
Diagnosis Category:	Chronic Obstructive Pulmonary Disease (COPD)
Tissue:	Lung
Frozen Sample ID:	FR0002F612
Case ID:	CU0000006910
Prep:	B
Vial ID:	DN0000045F
Tissue of Origin:	Lung
Site of Finding:	Lung
Appearance:	Lesional
Sample Diagnosis (from Pathology Verification):	Emphysema, centrilobular
Normal:	0%
Lesional:	100%
Tumor:	0%
Tumor Hypo/Acellular Stroma:	0%
Tumor Hypercellular Stroma:	0%
Necrosis:	0%
Pathology Verification notes from H&E review:	Inflammation: Mild Mixed inflammatory infiltrate. Non Tumor Structures: 80% Alveoli, 20% Fibrovascular septa
Bioanalyzer Ratio (28S/18S):	1.87



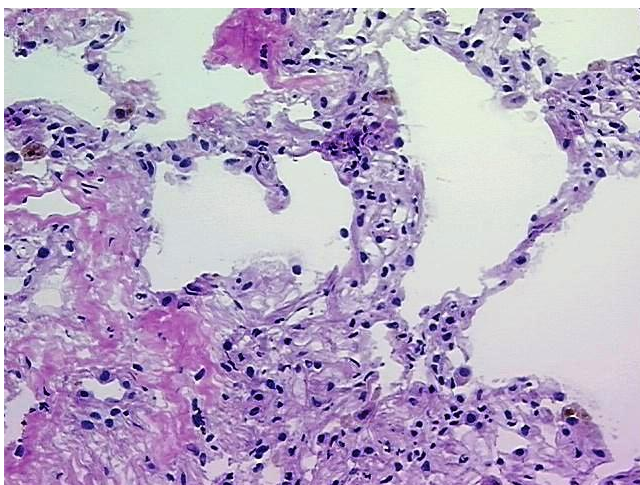
[View online »](#)

CASE Diagnosis (from medical center path report):	Carcinoma of lung, squamous cell
Age:	59
Gender:	Male
Tumor Grade:	AJCC G3: Poorly differentiated
Minimum Stage Grouping:	IA
T (Extent of Primary Tumor):	T1
N (Lymph node metastasis):	N0
M (Distant metastasis):	MX
Diagnostic Test Results:	ERBB1 ~ EGFR ~ Epidermal growth factor receptor ! by IHC,Positive, strong; HER2 ~ ERBB2 ~ Neu ! by IHC,Negative
Storage:	Store the total DNA -80°C.
Stability:	These products are stable for one year from date of shipping when stored at -80°C without repeated freeze/thaws.

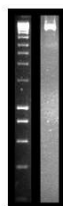
Product images:



DNA - 4x.



DNA - 20x.



DNA PCR Image