

Product datasheet for **CD564374**

Tissue Genomic DNA, Ovary: right

Product data:

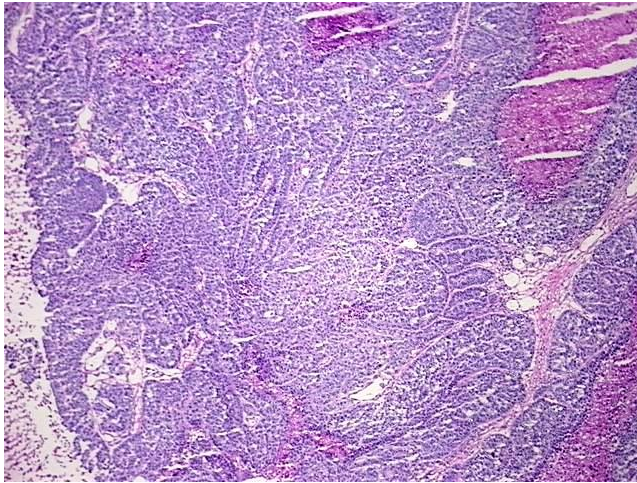
Product Type:	Genomic DNA
Disease State:	Cancer
Diagnosis Category:	Ovarian Cancer
Tissue:	Ovary
Frozen Sample ID:	FR6A38A09E
Case ID:	CU0000006890
Prep:	A
Vial ID:	DN0000060F
Tissue of Origin:	Ovary: right
Site of Finding:	Ovary: right
Appearance:	Tumor
Sample Diagnosis (from Pathology Verification):	Adenocarcinoma of ovary, serous
Normal:	0%
Lesional:	0%
Tumor:	75%
Tumor Hypo/Acellular Stroma:	5%
Tumor Hypercellular Stroma:	10%
Necrosis:	10%
Pathology Verification notes from H&E review:	Tumor Stroma (Cellular): Desmoplastic reaction. Tumor Stroma (Hypo/Acellular): Fibrosis
Bioanalyzer Ratio (28S/18S):	2.02



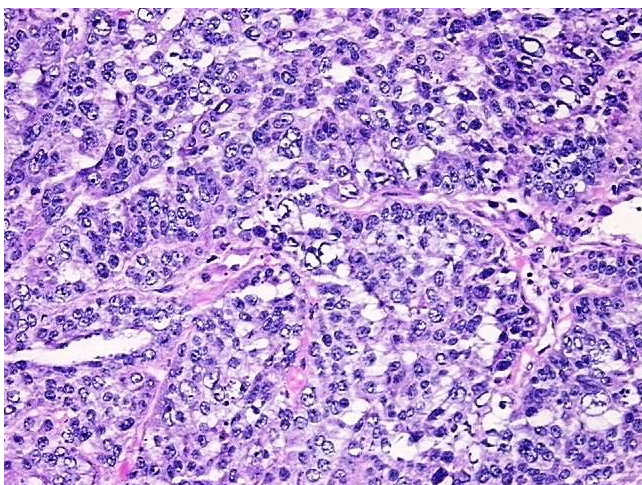
[View online »](#)

CASE Diagnosis (from medical center path report):	Adenocarcinoma of ovary, serous
Age:	63
Gender:	Female
Tumor Grade:	FIGO G2: Moderately differentiated
Minimum Stage Grouping:	IIIA
T (Extent of Primary Tumor):	T3a
N (Lymph node metastasis):	NX
M (Distant metastasis):	MX
Storage:	Store the total DNA -80°C.
Stability:	These products are stable for one year from date of shipping when stored at -80°C without repeated freeze/thaws.

Product images:



DNA - 4x.



DNA - 20x.



DNA PCR Image