

Product datasheet for **CD564370**

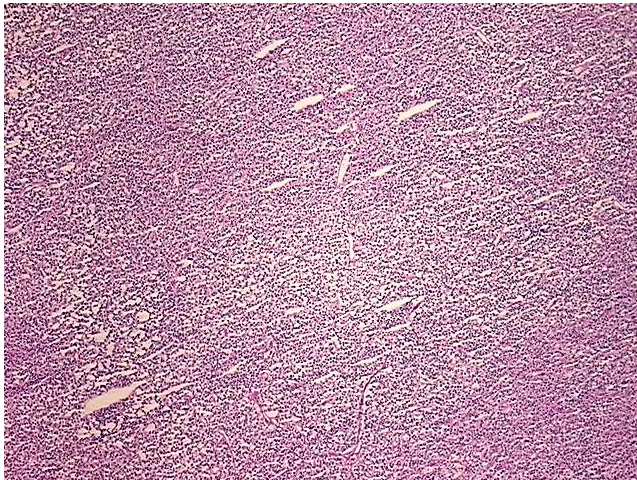
Tissue Genomic DNA, Lymphoid tissue

Product data:

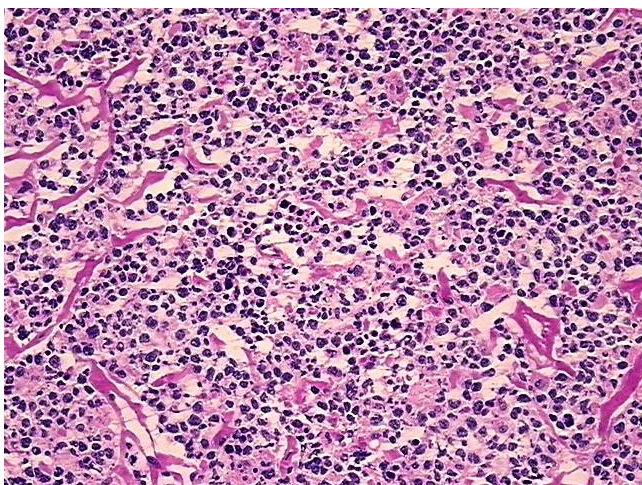
Product Type:	Genomic DNA
Disease State:	Cancer
Diagnosis Category:	Lymphoma
Tissue:	Lymphoid tissue
Frozen Sample ID:	FR65EE21A5
Case ID:	CU0000006870
Prep:	A
Vial ID:	DN00000893
Tissue of Origin:	Lymphoid tissue
Site of Finding:	Spleen
Appearance:	Tumor
Sample Diagnosis (from Pathology Verification):	Lymphoma, large B-cell, diffuse
Normal:	5%
Lesional:	0%
Tumor:	80%
Tumor Hypo/Acellular Stroma:	10%
Tumor Hypercellular Stroma:	0%
Necrosis:	5%
Bioanalyzer Ratio (28S/18S):	2
CASE Diagnosis (from medical center path report):	Lymphoma, large B-cell, diffuse
Age:	47


[View online »](#)

Gender:	Male
Tumor Grade:	Not Reported
Minimum Stage Grouping:	IV
T (Extent of Primary Tumor):	Not applicable
N (Lymph node metastasis):	Not applicable
M (Distant metastasis):	Not applicable
Diagnostic Test Results:	CD3 ~ Leu4 ~ UCHT1 ! by FC,Negative; CD11c ~ Integrin alpha X ~ LeuM5 ! by IHC,Negative; CD19 ~ B4 ~ Leu12 ! by IHC,Positive, strong; CD22 ~ Leu14 ! by IHC,Positive; CD33 ~ My9 ! by IHC,Negative; Kappa light chain ! by IHC,Negative; CD8 ~
Storage:	Store the total DNA -80°C.
Stability:	These products are stable for one year from date of shipping when stored at -80°C without repeated freeze/thaws.

Product images:


DNA - 4x.



DNA - 20x.



DNA PCR Image