

## Product datasheet for **CD564344**

### Tissue Genomic DNA, Breast

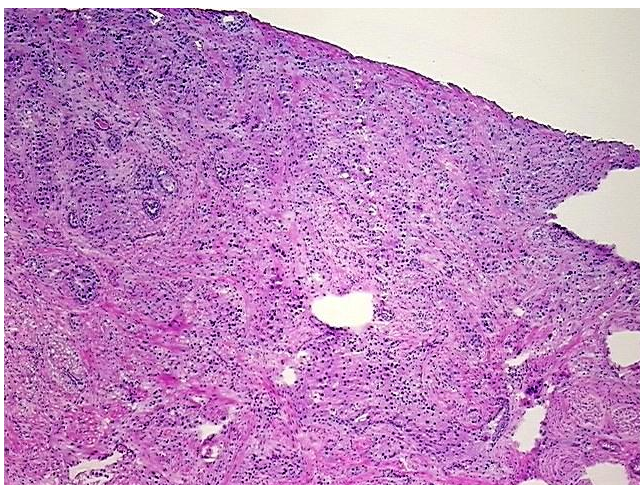
#### Product data:

Product Type:	Genomic DNA
Disease State:	Cancer
Diagnosis Category:	Breast Cancer
Tissue:	Breast
Frozen Sample ID:	FR000230BF
Case ID:	CU0000006276
Prep:	B
Vial ID:	DN00001868
Tissue of Origin:	Breast
Site of Finding:	Breast
Appearance:	Tumor
Sample Diagnosis (from Pathology Verification):	Adenocarcinoma of breast, ductal
Normal:	5%
Lesional:	0%
Tumor:	70%
Tumor Hypo/Acellular Stroma:	0%
Tumor Hypercellular Stroma:	20%
Necrosis:	5%
Bioanalyzer Ratio (28S/18S):	2.05
CASE Diagnosis (from medical center path report):	Adenocarcinoma of breast, ductal
Age:	62

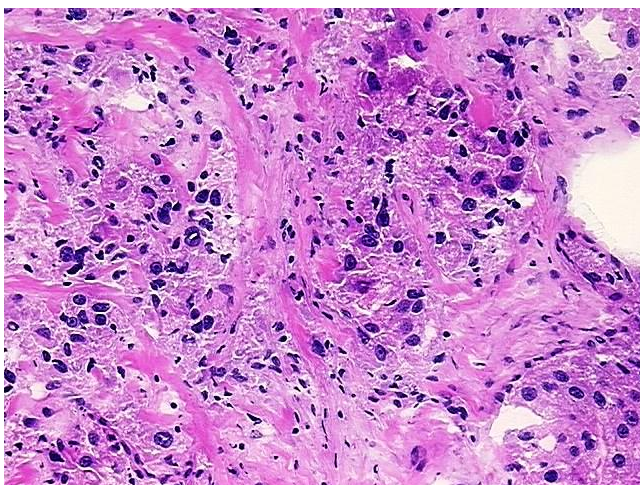

[View online »](#)

<b>Gender:</b>	Female
<b>Tumor Grade:</b>	Nottingham G2: 6-7 points Intermediate combined grade (moderately favorable)
<b>Minimum Stage Grouping:</b>	I
<b>T (Extent of Primary Tumor):</b>	T1c
<b>N (Lymph node metastasis):</b>	NX
<b>M (Distant metastasis):</b>	MX
<b>Diagnostic Test Results:</b>	Progesterone receptor ~ PR ! by IHC,Negative; Estrogen receptor ~ ER ! by IHC,Negative; ERBB2,Not amplified; HER2 ~ ERBB2 ~ Neu ! by IHC,Equivocal
<b>Storage:</b>	Store the total DNA -80°C.
<b>Stability:</b>	These products are stable for one year from date of shipping when stored at -80°C without repeated freeze/thaws.

### Product images:



DNA - 4x.



DNA - 20x.