

## Product datasheet for **CD564291**

### Tissue Genomic DNA, Lung

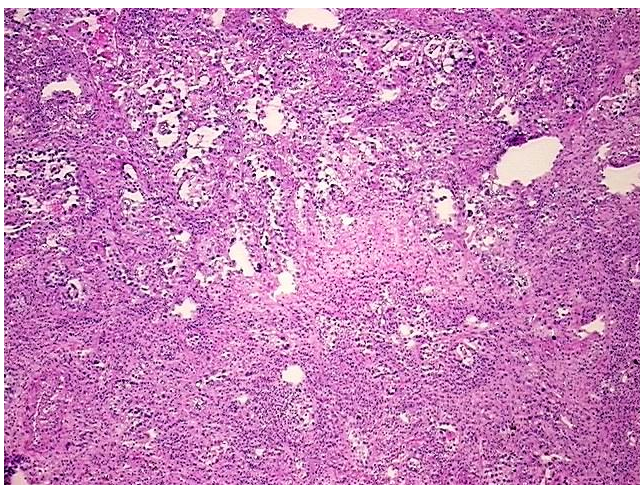
#### Product data:

Product Type:	Genomic DNA
Disease State:	Cancer
Diagnosis Category:	Lung Cancer
Tissue:	Lung
Frozen Sample ID:	FR5B33B009
Case ID:	CI0000008098
Prep:	B
Vial ID:	DN000000DF
Tissue of Origin:	Lung
Site of Finding:	Lung
Appearance:	Tumor
Sample Diagnosis (from Pathology Verification):	Adenocarcinoma of lung
Normal:	0%
Lesional:	10%
Tumor:	80%
Tumor Hypo/Acellular Stroma:	10%
Tumor Hypercellular Stroma:	0%
Necrosis:	0%
Pathology Verification notes from H&E review:	lesion: organizing pneumonia with 2+ MAC, 1+ LYP
Bioanalyzer Ratio (28S/18S):	1.87

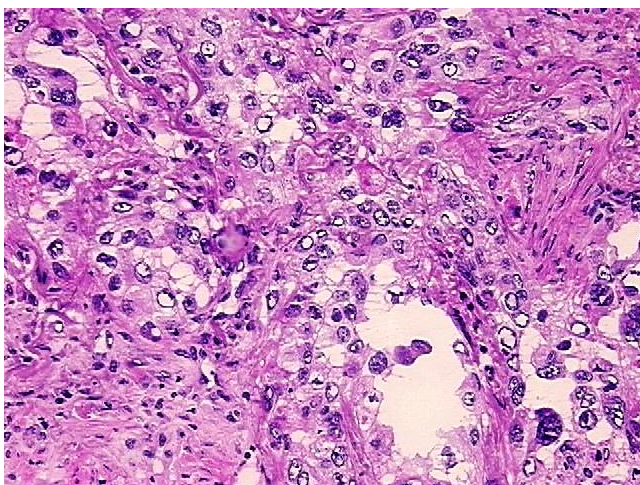

[View online »](#)

<b>CASE Diagnosis (from medical center path report):</b>	Adenocarcinoma of lung
<b>Age:</b>	78
<b>Gender:</b>	Female
<b>Race:</b>	White or Caucasian
<b>Tumor Grade:</b>	AJCC G2: Moderately differentiated
<b>Minimum Stage Grouping:</b>	IA
<b>T (Extent of Primary Tumor):</b>	T1
<b>N (Lymph node metastasis):</b>	N0
<b>M (Distant metastasis):</b>	MX
<b>Diagnostic Test Results:</b>	CD227 ~ MUC1 ~ EMA ~ CA15-3 ! by IHC,Negative; Verhoeff-Van Gieson ~ Elastin stain,Pleura not involved; Smooth muscle actin ~ SMA ~ Alpha-SMA ! by IHC,Negative; Vimentin ~ VIM ! by IHC,Negative; ERBB1 ~ EGFR ~ Epidermal growth factor rec
<b>Storage:</b>	Store the total DNA -80°C.
<b>Stability:</b>	These products are stable for one year from date of shipping when stored at -80°C without repeated freeze/thaws.

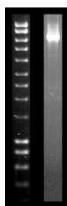
### Product images:



DNA - 4x.



DNA - 20x.



DNA PCR Image