

## Product datasheet for **CD564287**

### Tissue Genomic DNA, Lung

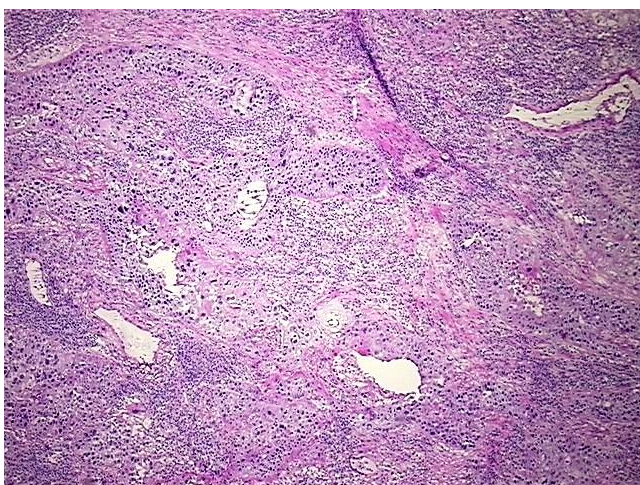
#### Product data:

Product Type:	Genomic DNA
Disease State:	Cancer
Diagnosis Category:	Lung Cancer
Tissue:	Lung
Frozen Sample ID:	FR5B33B3D5
Case ID:	CI0000009749
Prep:	D
Vial ID:	DN00000A65
Tissue of Origin:	Lung
Site of Finding:	Lung
Appearance:	Tumor
Sample Diagnosis (from Pathology Verification):	Carcinoma of lung, squamous cell
Normal:	0%
Lesional:	0%
Tumor:	70%
Tumor Hypo/Acellular Stroma:	0%
Tumor Hypercellular Stroma:	20%
Necrosis:	10%
Bioanalyzer Ratio (28S/18S):	1.9
CASE Diagnosis (from medical center path report):	Carcinoma of lung, squamous cell
Age:	73

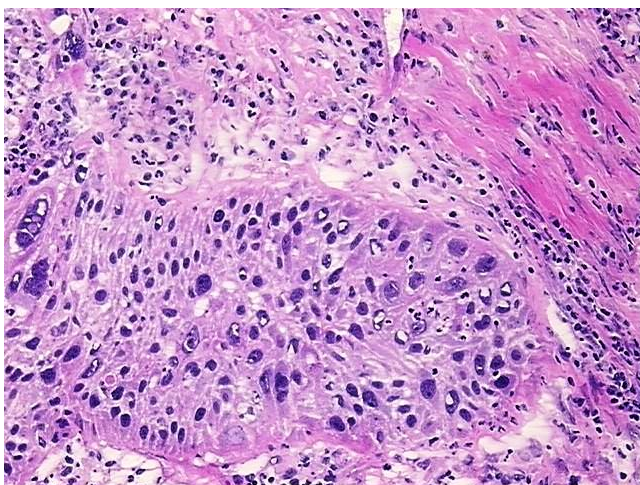

[View online »](#)

<b>Gender:</b>	Female
<b>Race:</b>	White or Caucasian
<b>Tumor Grade:</b>	AJCC G3: Poorly differentiated
<b>Minimum Stage Grouping:</b>	IIIB
<b>T (Extent of Primary Tumor):</b>	T4
<b>N (Lymph node metastasis):</b>	N0
<b>M (Distant metastasis):</b>	MX
<b>Diagnostic Test Results:</b>	CEA-D14 ~ Carcinoembryonic Antigen - D14,Positive; Cytokeratins (5 and 6) ~ CK5,6 ! by IHC,Positive; Cytokeratin 20 ~ CK20 ! by IHC,Negative; HMB45 melanoma antigen ~ GP100 ! by IHC,Negative; Cytokeratin 7 ~ CK7 ! by IHC,Positive
<b>Storage:</b>	Store the total DNA -80°C.
<b>Stability:</b>	These products are stable for one year from date of shipping when stored at -80°C without repeated freeze/thaws.

### Product images:



DNA - 4x.



DNA - 20x.



DNA PCR Image