

Product datasheet for **CD564248**

Tissue Genomic DNA, Kidney

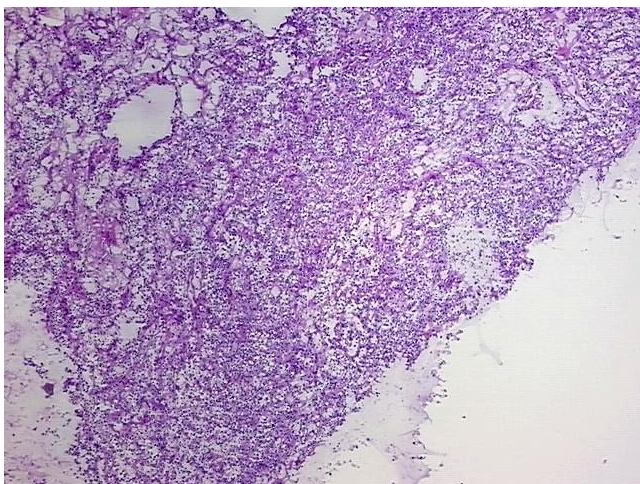
Product data:

Product Type:	Genomic DNA
Disease State:	Cancer
Diagnosis Category:	Renal Cell Carcinoma
Tissue:	Kidney
Frozen Sample ID:	FR00026C2F
Case ID:	CI0000008227
Prep:	A
Vial ID:	DN00000321
Tissue of Origin:	Kidney
Site of Finding:	Kidney
Appearance:	Tumor
Sample Diagnosis (from Pathology Verification):	Carcinoma of kidney, renal cell, clear cell, sarcomatoid features
Normal:	0%
Lesional:	0%
Tumor:	70%
Tumor Hypo/Acellular Stroma:	0%
Tumor Hypercellular Stroma:	5%
Necrosis:	25%
Bioanalyzer Ratio (28S/18S):	2.1
CASE Diagnosis (from medical center path report):	Carcinoma of kidney, renal cell, clear cell, sarcomatoid features
Age:	60

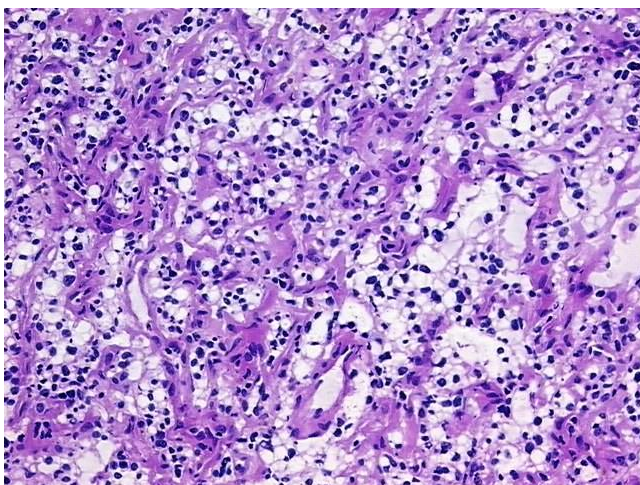


[View online »](#)

Gender:	Male
Race:	White or Caucasian
Tumor Grade:	Fuhrman G4: Nuclei bizarre and multilobated
Minimum Stage Grouping:	IV
T (Extent of Primary Tumor):	T4
N (Lymph node metastasis):	NX
M (Distant metastasis):	MX
Diagnostic Test Results:	Proliferation index ~ PI,High
Storage:	Store the total DNA -80°C.
Stability:	These products are stable for one year from date of shipping when stored at -80°C without repeated freeze/thaws.

Product images:

DNA - 4x.



DNA - 20x.



DNA PCR Image