

Product datasheet for **CD564208**

Tissue Genomic DNA, Liver

Product data:

Product Type:	Genomic DNA
Disease State:	Cancer
Diagnosis Category:	Liver Cancer
Tissue:	Liver
Frozen Sample ID:	FR6A38B464
Case ID:	CI0000007246
Prep:	D
Vial ID:	DN000006CB
Tissue of Origin:	Liver
Site of Finding:	Liver
Appearance:	Tumor
Sample Diagnosis (from Pathology Verification):	Carcinoma of liver, hepatocellular
Normal:	0%
Lesional:	0%
Tumor:	95%
Tumor Hypo/Acellular Stroma:	0%
Tumor Hypercellular Stroma:	5%
Necrosis:	0%
Pathology Verification notes from H&E review:	tumor stroma: some lymphocytic infiltrate present
Bioanalyzer Ratio (28S/18S):	1.94


[View online »](#)

CASE Diagnosis (from medical center path report): Carcinoma of liver, hepatocellular

Age: 73

Gender: Male

Race: Not reported

Tumor Grade: AJCC G2: Moderately differentiated

Minimum Stage Grouping: I

T (Extent of Primary Tumor): T1

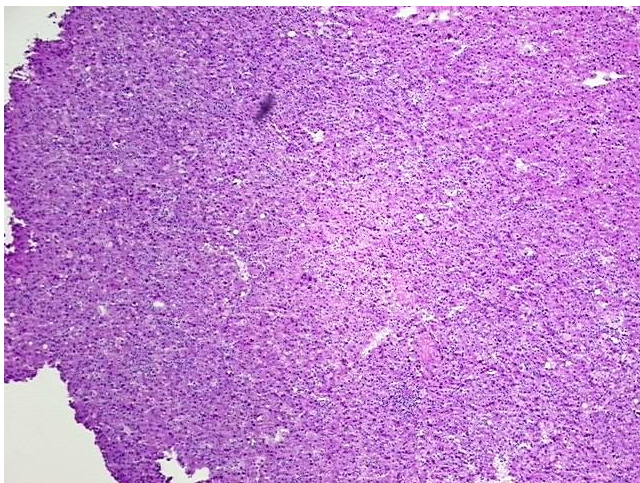
N (Lymph node metastasis): NX

M (Distant metastasis): MX

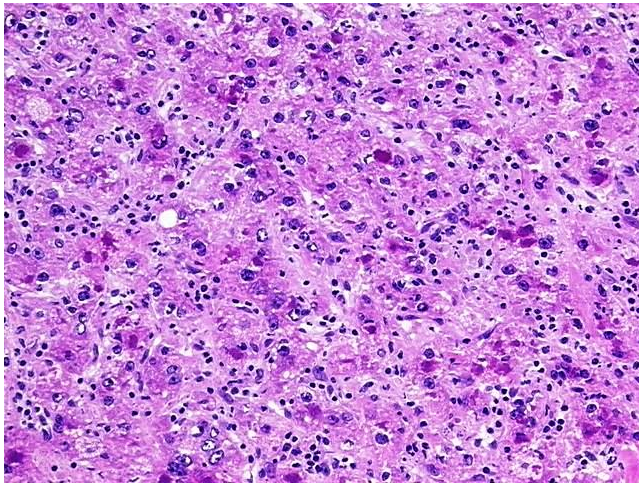
Storage: Store the total DNA -80°C.

Stability: These products are stable for one year from date of shipping when stored at -80°C without repeated freeze/thaws.

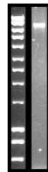
Product images:



DNA - 4x.



DNA - 20x.



DNA PCR Image