

## Product datasheet for **CD564195**

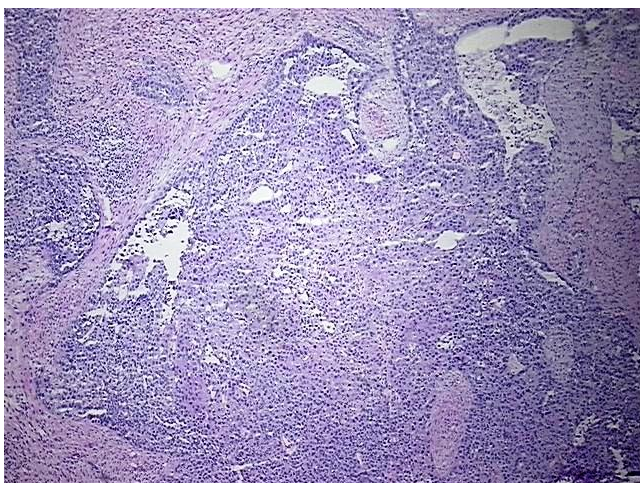
### Tissue Genomic DNA, Ovary: left

#### Product data:

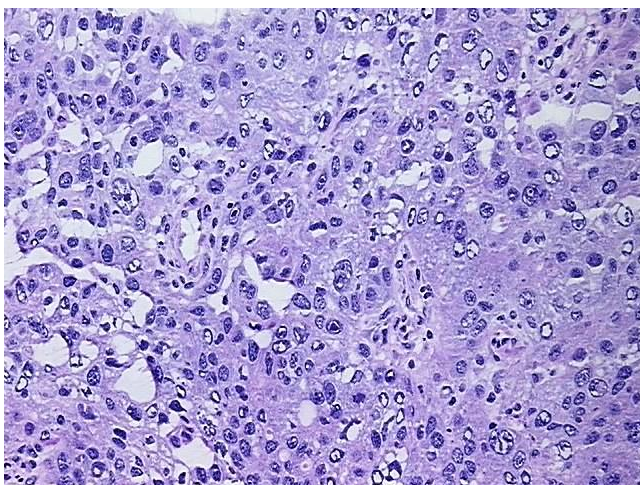
Product Type:	Genomic DNA
Disease State:	Cancer
Diagnosis Category:	Ovarian Cancer
Tissue:	Ovary
Frozen Sample ID:	FR6A389F28
Case ID:	CI0000007875
Prep:	D
Vial ID:	DN00001350
Tissue of Origin:	Ovary: left
Site of Finding:	Omentum
Appearance:	Tumor
Sample Diagnosis (from Pathology Verification):	Adenocarcinoma of ovary, papillary serous, metastatic
Normal:	0%
Lesional:	0%
Tumor:	60%
Tumor Hypo/Acellular Stroma:	0%
Tumor Hypercellular Stroma:	40%
Necrosis:	0%
Bioanalyzer Ratio (28S/18S):	1.92
CASE Diagnosis (from medical center path report):	Adenocarcinoma of ovary, papillary serous
Age:	58


[View online »](#)

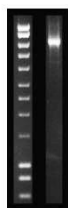
Gender:	Female
Race:	White or Caucasian
Tumor Grade:	FIGO G2: Moderately differentiated
Minimum Stage Grouping:	IIIC
T (Extent of Primary Tumor):	T3c
N (Lymph node metastasis):	NX
M (Distant metastasis):	MX
Storage:	Store the total DNA -80°C.
Stability:	These products are stable for one year from date of shipping when stored at -80°C without repeated freeze/thaws.

**Product images:**


DNA - 4x.



DNA - 20x.



DNA PCR Image