

Product datasheet for **CD564180**

Tissue Genomic DNA, Kidney

Product data:

Product Type:	Genomic DNA
Disease State:	Cancer
Diagnosis Category:	Renal Cell Carcinoma
Tissue:	Kidney
Frozen Sample ID:	FR000220B9
Case ID:	CI0000007579
Prep:	A
Vial ID:	DN00000486
Tissue of Origin:	Kidney
Site of Finding:	Kidney
Appearance:	Tumor
Sample Diagnosis (from Pathology Verification):	Carcinoma of kidney, renal cell, clear cell
Normal:	0%
Lesional:	0%
Tumor:	60%
Tumor Hypo/Acellular Stroma:	40%
Tumor Hypercellular Stroma:	0%
Necrosis:	0%
Pathology Verification notes from H&E review:	hypoacelluar stroma contains fibrosis
Bioanalyzer Ratio (28S/18S):	1.97



[View online »](#)

CASE Diagnosis (from medical center path report): Carcinoma of kidney, renal cell, clear cell

Age: 62

Gender: Male

Race: White or Caucasian

Tumor Grade: Fuhrman G4: Nuclei bizarre and multilobated

Minimum Stage Grouping: III

T (Extent of Primary Tumor): T3b

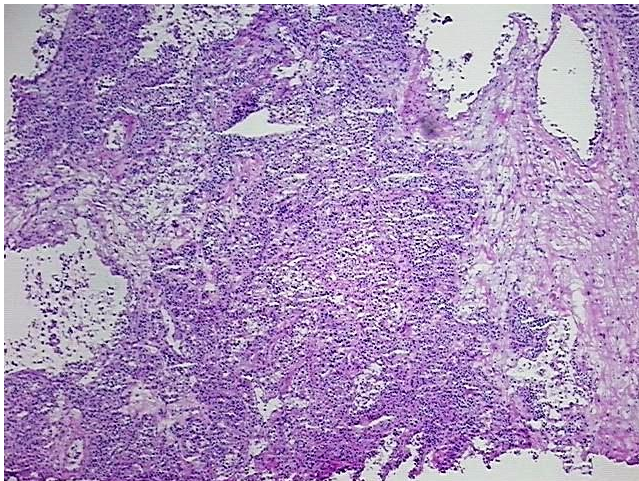
N (Lymph node metastasis): N0

M (Distant metastasis): MX

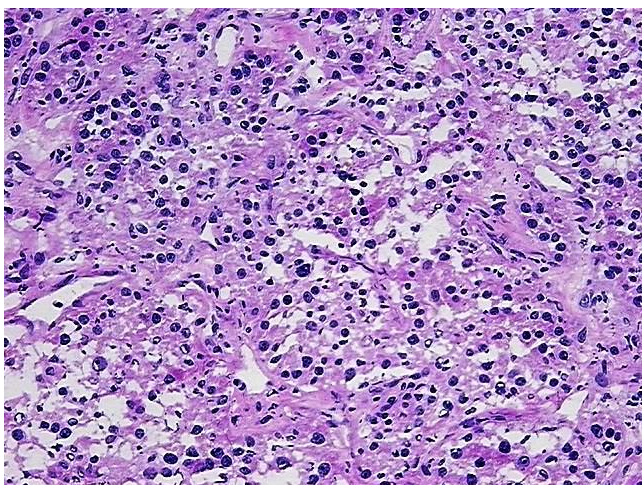
Storage: Store the total DNA -80°C.

Stability: These products are stable for one year from date of shipping when stored at -80°C without repeated freeze/thaws.

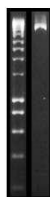
Product images:



DNA - 4x.



DNA - 20x.



DNA PCR Image